

**SIZES OF GIRLS' DRESSES ARE  
8 TO 14 YEARS**

**34x801.** Attractive Little Summer Dress of good quality White Organdie. This pretty frock has a chic empire waist elaborated on front with embroidered Organdie, Val. lace insertion and fine tucks. Back of waist is tucked in clusters and the short sleeves are daintily lace edged. The skirt is adorned with two ruffles of embroidered Organdie, combined with groups of tucks and Val. lace insertion. Dress fastens in back. Comes in white with pink or blue satin ribbon sash. Sizes 8 to 14 years. Post-**\$1.98** paid .....

**34X801  
\$1.98**

**34X801  
\$1.29**



**34X800  
\$2.98**

**34x800.** Girls' Dress made of beautiful sheer white embroidery flouncing. Embroidery is worked on fine white Organdie and the dress is a charming selection for best or party wear. The waist is tucked in clusters in back. Neck and tucked sleeves are edged with Val. lace. Front of waist is of embroidery, as pictured, and the skirt is composed of three full gathered flounces of embroidered Organdie. The satin ribbon sash may be had in pink or blue. Dress fastens in back. Comes in white only, sizes 8 to 14 years. Postpaid..... **\$2.98**

Girls' Dresses come in the following measurements, order by age.

Sizes	Chest	Length of Dresses.
8 years .....	28.....	30 in.
10 years .....	30.....	34 in.
12 years .....	32.....	38 in.
14 years .....	34.....	42 in.

Take measurement from bottom of neck band to edge of skirt in back.



**34X805  
\$1.79**

**34x805.** Charming Dress, of sheer white Organdie. Waist has panel plastron front, over a lining of plain Organdie. The plastron is composed of embroidered Organdie and Val. lace, trimmed with hand made silk rosebuds. Back is finely tucked and clusters of tucks adorn the lace edged short sleeves. The full skirt is made of embroidered Organdie flouncing and the satin sash comes in pink or light blue. Dress fastens in back. **\$1.79**

**34x802.** Dress of fine white Organdie and Japanese Embroidery. Bands of embroidery and Val. lace are used to form panels at each side of the front falling loosely over the belt and skirt. Val. forms the vestee effect in front. Tucks finish back of waist. The skirt is trimmed with wide tucks and Val. lace insertion. Fastens in back. Sash and rosette of satin ribbon in pink or light blue. Sizes 8 to 14 yrs. **\$2.49**

**34x803.** Dress of fine white Lawn and Swiss embroidery flouncing. Front of waist is of embroidery with a center panel of embroidered Organdie. The back is finely tucked in clusters. The skirt and belt are trimmed with cluster tucks. The skirt ends in a deep flounce of embroidery. The satin ribbon sash comes in blue or pink. Fastens in back..... **\$1.29**

**34x806.** Beautiful Dress of fine white Organdie. Front of waist is composed of panels of embroidered Organdie surrounded by Val. lace. The Dutch neck and short sleeves are lace edged and lace also finishes the chic peplum which gives a coat effect. Lower edge of skirt is finished with embroidery and rows of Val. lace and the back of waist is finely tucked. Fastens in back. Satin ribbon sash and rosette in pink or light blue.. **\$3.98**

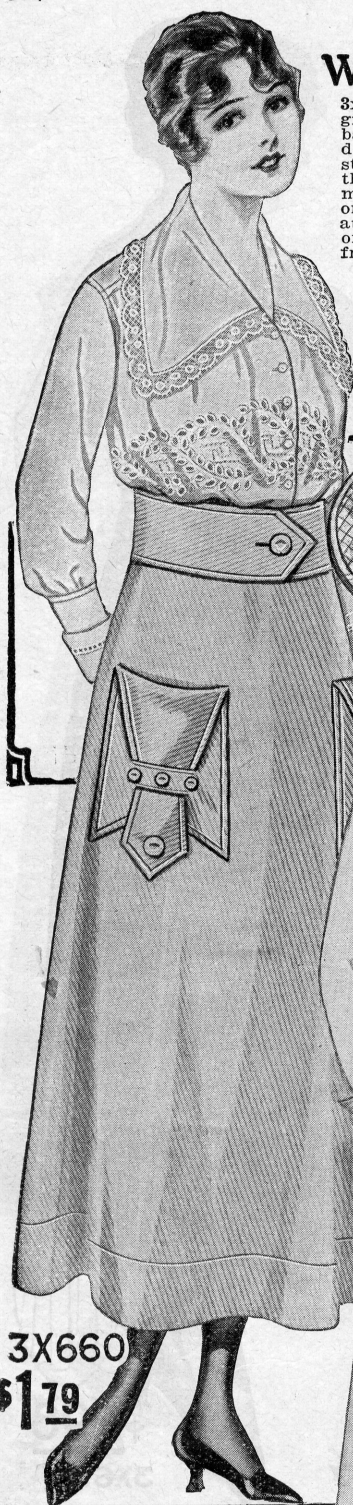
**34X806  
\$3.98**





## A Neat Washable Skirt

3x660. Smart Skirt of high grade white mercerized Gabardine. It is easy to launder and does not need to be starched, as the texture of the fabric is like a woolen material. The skirt is cut on fashionable lines, shirred at the back beneath the belt of self material and on the front are two patch pockets, finished with pointed flaps, trimmed with fish eye pearl buttons. Skirt fastens invisibly at left side. Comes in white only. Sizes 22 to 32 waist measure, 36 to 44 inches length. The very best value you ever bought. Postage paid..... **\$1.79**



3X660  
**\$1.79**

## Well Tailored Washable Skirt

3x661. A Neat, Well-tailored Summer Wash Skirt of good quality, heavy weight, white Nearlin. This smart good looking skirt fastens all the way down front with fish eye pearl buttons, which have no metal and will not rust when washed. The pockets are also button trimmed and a fancy pointed belt conceals the shirring at waist line in back. The points of belt in back are finished with buttons. Comes in white only. Sizes 22 to 32 waist, length 36 to 44 inches. Excellent value, Postage paid ..... **\$1.89**

WE PLEASE YOU OR REFUND YOUR MONEY

3X661  
**\$1.89**



## Washable Mercerized Gabardine Skirt

3x662. An Attractive Wash Skirt, made of heavy weight mercerized Cotton Gabardine. This material is easy to launder, wears like iron and requires no starch when it is washed. The skirt is shirred at the waist line beneath a wide detachable belt of self material. The front has two large patch pockets with turn-over buttoned flaps. The skirt fastens invisibly at left side. Comes in white only. Sizes 22 to 32 waist, length 36 to 44 inches. Great big value, postpaid. **\$2.49**

WE PAY ALL MAIL OR EXPRESS CHARGES TO YOUR TOWN



3X662  
**\$2.49**

3x663. The woman who rides horse back or motors, will want this smartly tailored mannish divided Skirt. It is made of high grade military olive tan khaki cloth—an ideal material for the purpose. When worn as an ordinary skirt the model buttons down the front, but when horse back riding or cycling, it may be unbuttoned and becomes a divided skirt (see small illustration). Model fastens with self-colored bone buttons and has two military flap pockets. Sizes 22 to 32 waist, length 36 to 44 ins. **\$3.98**

3x664. Neat Military Jacket, to be worn with riding skirt, made of olive tan khaki cloth with platted buttoned pockets. Tan only. Sizes 32 to 46 bust..... **\$3.98**  
3x664A. Special price for skirt and jacket. **\$7.69**



3X663  
**\$3.98**





## Smart Blouses at Small Cost

**2X650**  
\$**1.49**

2x650. It is seldom that you have an opportunity to buy a chic, dainty, summer Blouse of such superior quality and style at this low price. It is made of washable white Voile in a good, durable quality. The blouse has the fashionable deep cape effect collar of embroidered Voile with an edging of Venise lace. The front is also adorned with embroidery and shows four clusters of fine pin tucks. It fastens with fancy pearl buttons, and has long sleeves with turn-back hemstitched tucked cuffs. The seams are joined by veining. Waist comes in white only. Sizes 32 to 46 bust. **\$1.49**  
Postage paid.. **\$1.49**

2x651. In these days of high prices and scarcity of material, you'll surely find it amazing to buy a pretty and well made waist like this for only \$1.00. It's a Bellas Hess Value—that explains it. Waist is made of good quality, washable, white Voile, with a graceful embroidered hemstitched collar, edged with Val lace. The front is adorned with a pretty draped double wing jabot of embroidered voile, lace edged like the collar. The long sleeves and the front are finished with veining and blouse fastens with pearl buttons. White only. Sizes 32 to 46 bust. The biggest dollar's worth you ever bought. **\$1.00**  
Postage paid, **\$1.00**

**2X651**  
\$**1.00**

Here  
Are Special  
Values in the  
Season's Newest  
Blouses

**2X652**  
\$**1.98**

2x652. A Pretty Blouse of fine, washable white Voile. This charming model has a deep collar with epaulet shoulders. The collar and front of waist are of embroidered Voile in a charming pattern and the collar is embellished with an edging of Venise lace and medallions of filet lace. The back is finely tucked and the long sleeves have tucked hemstitched cuffs trimmed with an edging of Val lace. All the seams are joined by veining. Blouse fastens diagonally across front with pearl buttons. Comes in white only. Sizes 32 to 46 bust. Postage paid, **\$1.98**

**2X653 \$1.29**

2x653. A Simple, Charming Summer Blouse, made of a material that you will be pleased with. A novelty Voile in dainty colors with woven broad white madras stripes. The material will launder beautifully and while light in texture and cool, it will give splendid wear. The blouse is designed with V shaped low neck and has slightly rolled collar and turn-over cuffs of wide wale white cotton pique. It fastens in front with fancy pearl buttons, as pictured. It comes in Copenhagen blue or rose with white corded stripes. Sizes 32 to 46 bust. Postpaid, **\$1.29**

**2X654**  
\$**1.69**

2x654. A Dainty Summer Waist of good quality, washable, white Voile. This charming model has a double plaited jabot and a deep graceful collar of prettily embroidered Voile with an edging of Venise lace, as pictured. The waist fastens invisibly with pearl buttons and has long sleeves finished with turn-over cuffs edged with Venise lace. The cuffs and shoulders are joined by veining. Waist comes in white only. Sizes 32 to 46 bust. A dainty waist specially priced. **\$1.69**  
Postage paid..... **\$1.69**



## Real Beach Cloth

9x1040. Who minds the hot weather, when wearing a suit like this? The boy will revel in this splendid well tailored feather weight suit. It is made of genuine Beach Cloth—a fine, durable, light weight material in natural Pongee Tan. This fabric will wear like iron, keep its shape and it may be washed repeatedly. You don't have to send it to the cleaner's. The jacket is designed in regulation Palm Beach style, with a belt, also yoke and d stitched plaits in back. It has three patch pockets and the white pearl buttons used for closing and sleeves have no metal to rust when the suit is washed. Knickerbocker trousers. Suit comes in light tan only, for boys from 7 to 17 years of age. Special low price, postage paid... **\$3.49**

9x1041. Hat of Honolulu Beach Cloth in natural tan to match above suit..... **59c**

WE PAY THE POSTAGE

CAP  
9X1041

CAP  
9X1043

CAP  
9X1045

Cool, Comfortable  
Beach Cloth

9x1044. A Swagger Newport Model, to keep the boy cool and well dressed in tropical weather. It is made of fine durable Beach Cloth in natural tan with brown stripes. This material keeps its shape and may be washed. It stands all kinds of hard wear and laundering. The jacket has yoke and d knitted plaits, back and front and is finished with a belt and stylish patch pockets. It has button trimmed tabs on the front and the pearl buttons used are non-rustable. Knickerbocker trousers. Tan only with brown stripes. Sizes 7 to 16 years. Postage paid. A big value.... **\$1.98**

9x1045. Golf Cap on the figure of the same material as above suit..... **59c**

WE PAY ALL  
MAIL OR EXPRESS  
CHARGES  
TO YOUR TOWN

CAP  
9X1047

HAT  
9X1049

9X1042  
\$4.19

9X1040  
\$3.49

9X1044  
\$1.98

### Navy Blue Cheviot

9x1042. Boys' Good, Durable, Well Tailored Suit, with Knickerbocker trousers, made of good iron wear, navy blue Cheviot, guaranteed fast color. The material is woven of a combination of wool and cotton and will give thoroughly satisfactory wear. The coat is of Norfolk military style with yoke and stitched box plaits both back and front. It has attached belt, two patch pockets and button trimmed flaps as pictured. It is lined with reliable quality Twill. The trousers are double stitched. Navy blue only. **\$4.19** sizes 7 to 14 years. Postage paid.....

9x1043. Golf Cap shown on figure, made of navy blue Cheviot to match suit..... **59c**

### Nothing Better for Hot Weather Than "Koolcloth"

9x1046. A Splendid Hot Weather Suit made of feather weight Koolcloth. This is a fine material for hot weather—a mixture of wool and cotton woven to look like all wool French Flannel. It is very light in weight and may be washed. It will wear like iron. The natty belted jacket is unlined and has Tuxedo patch pockets and stylish pinch back. Knee length, unlined Knickerbocker trousers. Comes in steel gray only with dark military blue shadow stripes. Sizes 7 to 17 years. A very special **\$3.98** value. Postage paid....

9x1047. Golf Cap of Koolcloth to be worn with suit. Postage paid..... **59c**

### Summer Weight Wool Cassimere

9x1048. A Well-made, Inexpensive, Thoroughly Serviceable Suit, made of durable wool mixed Cassimere. This material is not all wool, but the percentage of cotton woven through the fabric will not detract from its wearing qualities. The coat is a stylish trench model with buckled belt and slashed pockets. It has yoke and stitched pinch plaits at back. Coat is lined with Twill. Suit has well tailored Knickerbocker trousers, as pictured, and comes in fancy mixed gray or tan cassimere in neat patterns. Sizes 8 to 17 years. A splendid value, postage paid..... **\$3.98**

9x1049. Felt Telescope Hat shown on figure in gray or brown. Postage paid..... **85c**

9X1048  
\$3.98

9X1046  
\$3.98



**6X620**

**6x620. Hat of Hemp Straw Braid.** Trimmed with natural daisies and satin ribbon, held by hemp braid loops and ending in streamers in back. Colors: White with rose ribbon, burnt straw with Copenhagen blue ribbon, or rose color with rose ribbon. 8 to 14 years... **\$2.49**

**6x622. Child's Pretty Hat** in Turban Shape, made of flexible Hemp Straw Braid. Has round crown and mushroom brim with rolled up edge. Hat is trimmed with satin ribbon ending in bow effect and has cluster of berries on front. For girls from 8 to 10 years old. Colors: Copenhagen blue or rose, also in white with rose or Copenhagen blue trimming. Postpaid.... **\$1.98**

**6x623. Girls' Smart Summer Hat,** made of genuine Toyo Panama Straw. The mushroom polk effect brim is trimmed with a wreath of bluish pink rosebuds, combined with black velvet ribbon with velvet streamers at back. This hat is for girls from 8 to 14 years. Comes in natural white only with trimming as described. Postage paid **\$1.98** by us.....

**6X6**

**6x621. Chic Little Hat** for girls from 8 to 14 years. Made of lustrous, Straw Braid, over a net frame. Hat is trimmed with three rosette effect of fancy silk ribbon, pictured, and has ribbon loops and streamers in back. Colors: Rose gold with Copenhagen blue rosettes, also Copenhagen blue with rose. Postpaid, **\$1.98**

**6x626. Girls' Smart Little Panama Hat,** made of genuine Toyo Panama Straw in natural white only. Has telescopic crown, and mushroom brim is trimmed with band and plaited bow of satin ribbon. For girls from 8 to 14 yrs. White with black, rose or Copenhagen blue ribbon. Postage paid ..... **\$1.79**

**6X623****6X622**

**6x627. Girls' Attractive Hat** of good quality Milan Straw. Has high crown and close fitting mushroom brim. It is trimmed with straps of velvet ribbon with knots and streamers in back. Has pretty buds and foliage at each side. Colors: Rose Copenhagen blue, also in white with rose trimming. Sizes 8 to 14 years. Postage **\$1.38** paid .....

**6X626****6X625****6X624**

**6x624. Girls' Polk Bonnet** of fancy woven silk Straw Braid. Brim of Georgette Crepe and is trimmed with silk grosgrain ribbon arranged in bow at front, held by forget-me-nots and foliage. Has bow and streamers at back. Colors: Rose, Copenhagen blue or white trimmed to match. 8 to 14 years. **\$2.49**

**6x625. Girls' Hat** of Hemp Straw Braid. Trimmed with satin ribbon across top, finished with bows at each side and at front. Has satin ribbon chin strap. Comes in rose or Copenhagen blue, also in burnt straw with rose trimming. 8 to 14 years ..... **\$1.59**

**6X627**

**6x630. Girls' Hat of Milan Straw.** Has round dented effect crown trimmed with straps of velvet ribbon, bows and fancy metal ornament. The crown is white and the brim comes in rose or Copenhagen blue with trimming to match. 8 to 14 years. Postpaid **\$1.00**

**6X628****6X629**

**6x631. A Pretty Hat for little girls,** made of real Hemp Straw Braid. Hat has oval crown and dented mushroom brim. Crown is trimmed with narrow black velvet ribbon in lattice effect and hand made tiny silk buds. Comes in white or burnt straw with black ribbon. 8 to 10 years only.... **\$1.59**

**6X630**

**6x628. Little Dress Hat** for girls from 8 to 14 years old, made of superior quality fancy silk Lace Straw Braid, over a rice net frame. Mushroom brim is faced with Georgette Crepe and trimmed with a plaited ruffle of dainty white Oriental lace. Hand-made silk buds on front; hat comes in Copenhagen blue or rose with white lace. Postage paid .... **\$1.49**

**6x629. Very Attractive Little Panama Hat** for girls from 8 to 14 years, made of genuine Toyo White Panama Straw. Light as a feather. Very chic. The crown is trimmed with wide band and fancy bow effect at side of satin ribbon. The streamers are trimmed with a natural daisy and another daisy is placed at side of front. Comes in white with rose or Copenhagen blue trimming. Postage **\$2.49** paid .....

**6X631**



other fabric of similar texture, and it may be lavishly trimmed with lace, embroidered edging, insertion, ribbon, fancy braid or passementerie.

The small straw hat is adorned with ribbon and flowers.

FIGURE NO. 264 K.—LADIES' FÊTE TOILETTE.

(For Illustration see this Page.)

FIGURE NO. 264 K.—This consists of a Ladies' skirt and waist. The skirt pattern, which is No. 7013 and costs 1s. 3d. or 30 cents, is in nine sizes for ladies from twenty to thirty-six inches, waist measure, and may be seen in four views on page 167 of this DELINEATOR. The waist pattern, which is No. 7019 and costs 1s. or 25 cents, is in thirteen sizes for ladies from twenty-eight to forty-six inches, bust measure, and is differently illustrated on page 160.

A charming gown for a garden fête is here portrayed made of pink or gandy dotted with white, and trimmed with insertion and two widths of velvet ribbon. The five-gored skirt falls smoothly at the front and sides and in rolling folds at the back, and is gathered at the top, where only enough fullness is allowed at the front and sides to secure a comfortable adjustment over the hips. The skirt may be fitted by darts at the top of the front and sides, but gathers are preferable when light, airy fabrics are made up. A notable feature of the skirt is a graduated, gathered flounce, which is deepest at the center of the front, where its upper edge forms a decided point. The flounce is headed by a twist of narrow ribbon knotted at intervals; a large bow of wide ribbon consisting of two loops and upright ends is placed at the point, and the bottom is adorned with two rows of insertion. The flounce may shape two points in front instead of one, and the skirt may be plaited at the top of the back instead of gathered, the pattern providing for the several styles mentioned.

The waist is worn beneath the skirt and has a full outer body consisting of a back and fronts joined in under-arm and short shoulder seams and outlining a pointed yoke. The full back and fronts are gathered at the top, and the fullness at the lower edge is drawn well to the center and collected in two rows of shirring at the back and at each side of the closing, which



FIGURE NO. 264 K.—LADIES' FÊTE TOILETTE.—This consists of Ladies' Waist No. 7019 (copyright), price 1s. or 25 cents; and Five-Gored Skirt No. 7013 (copyright), price 1s. 3d. or 30 cents.

(For Description see this Page.)

is made with hooks loops at the center of this front. The shirrings are placed at belt depth and are concealed by a belt that is stitched to the waist. To secure a perfectly smooth adjustment, the waist is provided with a lining fitted by the customary darts and seams, and the waist is encircled by a folded belt of ribbon that closes at the center of the front under a fanciful bow consisting of two loops and upright ends. The lining is faced about the full body and trimmed with vertical rows of insertion which spread toward the bottom, and the lower edge of the facing is followed by a twist of narrow ribbon knotted at intervals, a bow of wide ribbon being placed at the bust. The standing collar is concealed by a band of insertion, and a bow of ribbon is placed at the throat. The mutton-leg sleeves are shaped by inside and outside seams, the outside seams extending only to the elbow, where they terminate below plaited fullness; they are close-fitting below the elbow and are mounted on smooth linings shaped by inside and outside seams. Bands of insertion start from the inside seam of each sleeve at the wrist and are carried diagonally upward about the arm to meet in a point at the outside under a coquettish bow of ribbon.

The mode will make up exquisitely in plain or fancy India silk, taffeta, Japanese crêpe, challis, crêpon, dotted Swiss, linen lawn, batiste or nainsook, and trimming may be arranged with lace, insertion, embroidered edging or ribbon. The yoke facing will frequently be of lace, beaded net or all-over embroidery. The hat is a fanciful shape in fine straw and is stylishly trimmed with ribbon, white lace and flowers.

FIGURE NO. 265 K.—LADIES' TOILETTE.

(For Illustration see Page 147.)

FIGURE NO. 265 K.—This consists of a Ladies' skirt and blouse-waist. The skirt pattern, which is No. 7013 and costs 1s. 3d. or 30 cents, is in nine sizes for ladies from twenty to thirty-six inches, waist measure, and may be seen in four views on page 167 of this DELINEATOR. The blouse-waist pattern, which is No. 7018 and costs 1s. or 25 cents, is in thirteen sizes for ladies from twenty-eight to forty-six inches, bust measure, and is differently



# Styles for Misses and Girls.

FIGURE No. 275 K.—GIRLS' DRESS.

(For Illustration see this Page.)

FIGURE No. 275 K.—This illustrates a Girls' dress. The pattern, which is No. 7027 and costs 1s. or 25 cents, is in eight sizes for girls from five to twelve years of age, and may be again observed by referring to page 177 of this magazine.

An extremely effective gown for best wear is here pictured, the material selected for its development being old-blue cashmere. The full, round skirt reaches to a becoming depth and falls in graceful folds all round from gathers at the top, where it is joined to the body. The body has a full front and full backs, which are shaped in moderately low, round outline at the top and are mounted upon a high-necked body-lining adjusted by

the fulness at the back is similarly disposed at each side of the center, which is made invisibly at the center; and under-arm goes to produce a becomingly smooth effect at the sides. The body lining exposed to shallow yoke depth is covered with a facing of cashmere.



FIGURE No. 275 K.—GIRLS' DRESS.—This illustrates Pattern No. 7027 (copyright), price 1s. or 25 cents.

(For Description see this Page.)

single bust darts and the usual gores. The fulness at the front is drawn to the center in soft folds by gathers at the top and bottom;



FIGURE No. 276 K.—MISSSES' OUTDOOR TOILETTE.—This consists of Misses Jacket No. 7007 (copyright), price 10d. or 20 cents; Four-Gored Skirt No. 7042 (copyright), price 10d. or 20 cents; and Waist No. 6345 (copyright), price 10d. or 20 cents.

(For Description see Page 171.)

decorated with diverging rows of lace insertion, and similar insertion covers the close-fitting standing collar and decorates the free edges



# Ladies' Pique, Crash and Duck Suits.

7

Sizes, 34, 36, 38, 40 and 42  
inches bust measure.

Skirt length, front, 38 to 43 inches.



No. 125

No. 129

No. 133

No. 137

No. 141

No. 145

- No. 125. Double-breasted White Pique Eton Suit, large white pearl buttons on skirt and jacket ..... \$9.50
- No. 127. Same style, open front, Eton suit, of white pique ..... 7.25
- No. 129. Ladies' Cotton Crash Blazer Suit. 5.25
- No. 131. Same style, made of brown linen. 6.90
- No. 133. Ladies' Cotton Crash Eton Suit, trimmed with fancy braid and buttons.... 5.75
- No. 135. Same style, made of polka dot duck, without braid; colors: tan, brown, or blue..... 5.00
- No. 137. Ladies' Blazer Suit, of polka dot duck..... 5.50
- No. 139. Same style, made of white or ecru piqué ..... 11.25
- No. 141. Ladies' Piqué Blazer Suit Jacket, braided with cotton soutache braid; colors: light blue, pink, white or ecru ..... 14.90
- No. 143. Double-breasted Reefer Suit, without braiding, made of white pique or figured linen duck..... 15.50
- No. 145. Ladies' Eton Suit, of fancy mixed etamine, trimmed with white braid..... 7.25
- No. 147. Same style, made of cotton crash. 6.50



# Ladies' Challie, Lawn and Cambric Wrappers.

9

Sizes, 34, 36, 38, 40 and 42 inches  
bust measure.

Front length, 54, 56 and 58 inches.



- No. 173. Ladies' Figured Challie Wrapper, trimmed with rows of satin ribbon in contrasting shade, light colorings..... \$3.45
- No. 175. Same style, made of plain cashmere, colors light blue, red, navy or black, 5.25
- No. 177. Ladies' Challie Wrapper, collar formed of satin ribbon and lace inserting, finished with full lace ruffle, gathered Watteau back.. 4.65
- No. 179. Same style, made of cashmere; colors, heliotrope, light blue, red, brown or navy blue..... 5.90
- No. 181. White Lawn Wrapper, trimmed with embroidery and lace edge..... 3.65
- No. 183. Same style, made of figured lawn 3.75
- No. 185. Ladies' Lawn Wrapper, light blue, pink or white, yoke, trimming on sleeves and neck of white inserting..... 2.85
- No. 187. Wrapper of fine quality of Flannellette, sailor collar, trimmed with ruffle and rows of fancy braid..... 1.98
- No. 189. Lace Striped Dimity Wrapper, trimmed with inserting and lace, fastened at waist with satin ribbon; colors, pink, blue, heliotrope and black and white..... 5.90
- No. 191. Same style, made of plain white lawn..... 5.75
- No. 193. Ladies' Wrapper of French Percale, trimmed with colored embroidery, yoke of fine tucks..... 3.65
- No. 195. Same style, made of linen lawn.. 4.75





No. 320. Reefeer Jacket, of all-wool navy blue or black cheviot, trimmed with black mohair braid. Sizes, 2 to 8 years. . . . \$2.98

No. 322. Imperial (Vest Suit), of fine brown or olive English mixed cheviots, braided vests to match. Sizes, 4 to 10 years. . . . 6.90  
Linen Crash Vest, as illustrated. . . . 1.45

No. 324. Russian Knickerbocker Suit, of gobelin, brown, navy, white or new red English cheviot serges, trimmed with silk soutache braid; leather belt. Sizes, 3 to 10 years. . . . 8.95  
Same style, of brown or tan plaid cheviots. . . . 7.98

No. 326. English Box Reefeer of tan covert cloth or plain navy blue cheviots. Sizes, 2½ to 8 years. Quality A. . . . 3.85  
Quality B. . . . \$4.98. Quality C. . . . 6.90  
Tam O'Shanter Cap, in brown or navy, as illustrated. . . . 1.35

No. 328. Imperial Suit (with Vest), of brown, tan or gray checked English cheviots. Sizes, 4 to 10 years. . . . \$5.98

No. 330. Hussar Reefeer, in brown, navy, gobelin or green English rough serges, handsomely braided. Sizes, 2 to 8 years. . . . 5.98

No. 332. Admiral Suit, of cadet gray or navy blue yacht cloth, inlaid combination collar, trimmed with silk soutache braid, embroidered design on shield and sleeve, silk tie. Sizes, 3 to 10 years. . . . 6.90  
Same with Long Middy Trousers. . . . 7.98  
Yacht Cap, as illustrated. . . . 1.23

No. 334. English Top Coat, of tan covert cloth. Sizes, 3 to 9 years. Quality A. . . . 4.98  
Quality B. . . . 6.90

No. 336. Double-Breasted Navy Blue Cheviot Reefeer. Sizes, 3 to 15 years. Quality A. \$3.95  
Quality B. . . . 4.98  
Yacht Cap. . . . 98

No. 338. Reefeer Coat, of English cheviot, in gobelin, navy, brown or green, collar trimmed with black and white braid. Sizes, 2 to 8 years. . . . 5.45  
Sailor Cap to match Coat. . . . 1.98

No. 340. Top Coat of Covert Cloth in tan or brown. Sizes, 4 to 16 years. Quality A. 3.85  
Quality B. . . . \$4.98. Quality C. . . . 5.98  
Same, of navy blue or black English cheviots. . . . 5.75  
Felt Alpine Hat. Quality A. . . . 1.59  
Quality B. . . . 1.90

No. 342. English Top Coat, in tan or olive Venetian cloth. Sizes, 4 to 16 years. Quality A. . . . \$5.98. Quality B. . . . 6.90  
Quality C. . . . 8.90  
Fine Felt Derby, as illustrated. . . . 1.90





UNIVERSITY

FRATERNITY

*Collegian Styles  
for Young Men  
who Seek Quality  
Service and Value*

*See Page 229 for Descriptions and Prices*



# Special Values at Smashed Prices



62M2715  
**\$2<sup>19</sup>**

## Men's Dress or Business Shirt

**62M2715**—Very newest pattern in a dress shirt for men. Material is good fast color percale. Comes in white with narrow pin stripes in various colors. Detachable collar with link buttons. Can be worn with or without collar. Made in open coat style. Patch pocket with facing. Faced sleeves with soft French cuffs. This shirt will appeal very strongly to all men who like to look and dress well. **Sizes 14½ to 17.** State size. **Price, delivered free.....\$2.19**

## Special Star Bargain Dress Shirt

**62M2716**—The season's very newest idea in a dress or work shirt for men. Made of good quality pongee in plain white only. Has attached collar with extra long points, which are fastened to the shirt with pearl buttons. Double reinforced extension neckband. Patch pocket with flap and button. Open coat style. Double yoke. Soft cuffs. Faced sleeves. This is one of the coolest and most stylish looking summer shirts shown this season. Order one and be convinced. **Sizes 14½ to 17.** State size. **Price, delivered free.....\$2.33**



**\$2<sup>33</sup>**

62M2716 WORTH **\$3<sup>00</sup>**

**\$2<sup>79</sup>**



62M2714  
**\$2<sup>19</sup>**

## Very Special Value Percale Shirt

**62M2714**—A very practical dress or business shirt for men. Made of good quality fast color percale. White ground with assorted colored stripes. Has laundered neckband. Open coat style. Double French cuffs. Well made in every respect. This shirt retails at your local store for much more than our price. **Sizes 14½ to 17.** State size. **Price, delivered free.....\$2.19**



Silk Mixed

62M2720  
**\$6<sup>49</sup>**

## Special Silk Mixed Shirt

**62M2720**—We offer here a very high grade silk mixed shirt for men. A mixture of fibre silk and cotton. Has laundered neckband. Open coat style; double French cuffs; faced sleeves with extra buttons on facing. This is a very elegant shirt; looks as good as a pure silk garment and will wear considerably better. Comes in white with assorted colored stripes. **Sizes 14½ to 17.** State size. **Price, delivered free.....\$6.49**



62M2717

## High Grade Percale Dress Shirt

**62M2717**—A very strong and durable dress shirt for men. Made of good quality percale. White ground with assorted colored stripes. This shirt has a laundered neckband and detachable collar of self material. Shirt can be worn with ordinary laundered collar if desired. Open coat style. Faced sleeves. **Sizes 14½ to 17.** Be sure to state size when ordering. **Price, delivered free.....\$2.79**