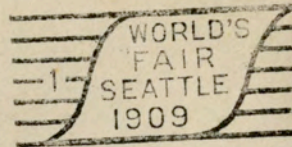
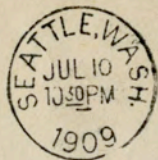




HOTEL GEORGIAN
FOURTH AVENUE
Pike & Union
SEATTLE, U. S. A.



90

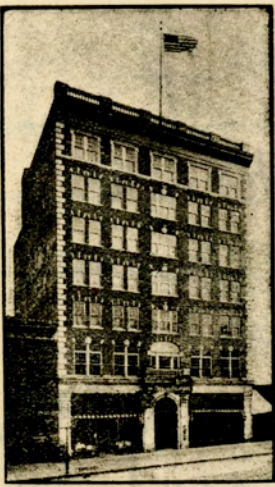
Mr. A. J. Stephens
26 Cornrow St.
Newton
Massachusetts

Rates \$1.00 up

Hotel Georgian

European Plan

Seattle, 7/10 / 1909



Dear Pa,

I do not know what day we will leave here but will leave soon. Will return to El Paso by way of California. Saw decidedly layqued from riding up on the top seat with the driver in Yellowstone Park. I drove the coach 13 days. There were 4 horses and the coach weighs 2400 lbs. It was against the rules but the driver let me. When we met another coach

or any soldiers the
driver took the reins.
Talk about sore crew!
And my nose oh my
nose! It was terribly
burned, looked just
like a burnt. It has
sealed now and begins
to look more respectable.

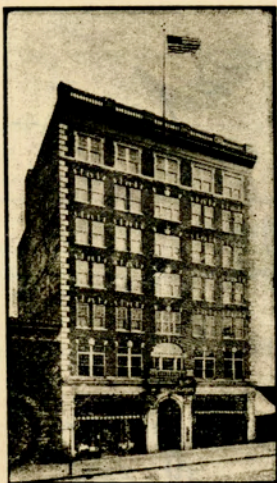
With us are some
charming Virginians
and some Harvards. We
certainly have good
times. They are all
jolly.

The Exposition is fine
In the Forestry bldg
are some pretty big
"sticks" One is 174 ft long
and $4\frac{1}{2}$ ft. sq. There is
a cross section of a tree
which is 9 ft. in diam.
There is a hollow tree

Hotel Georgian

European Plan

Seattle, _____ 190



trunk which will hold 50 people. The building is really mammoth. The columns are huge trees. I got what I hope will be a good picture of it. All the bldg's are fine and will be used by Seattle College later. Every one who has been to the other Expositions say that this is the first yet. The city is large and steadily increasing but looks very new. There are lots of large bldg's—

plenty of 12 stories ^{and}
several 14. There are
some dandy hotels.

Will we be home
soon?

You had best not ask
this as I will have left
before an ans could
come.

Yours
Gladys

189