

Rhythm Section

Cornet Chop Suey

Melody by Louis Armstrong

Originally arranged by Lillian Hardin; transcribed, transposed, and additionally arranged by Alan Green

A

3

F m7(b5) Bb7

f

Eb Bb7 Eb

9 F m7 Bb7 Eb Gb° F m7 Bb7

13 Eb Bb7 Eb

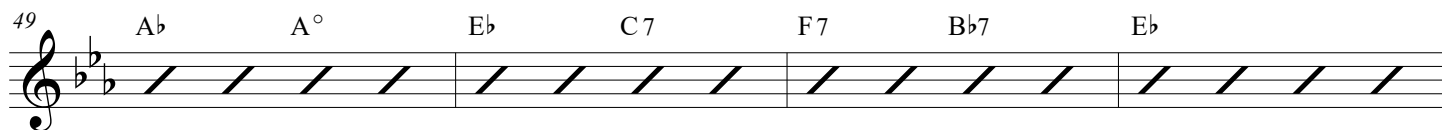
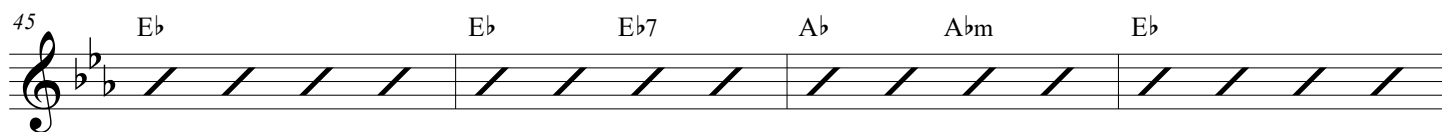
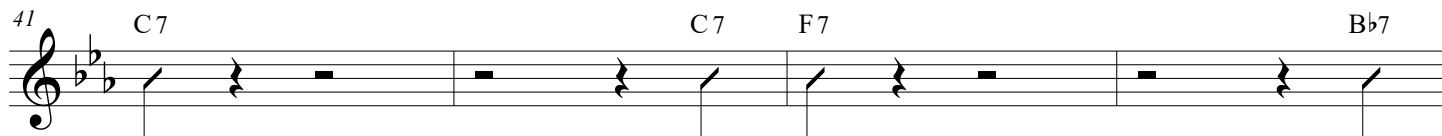
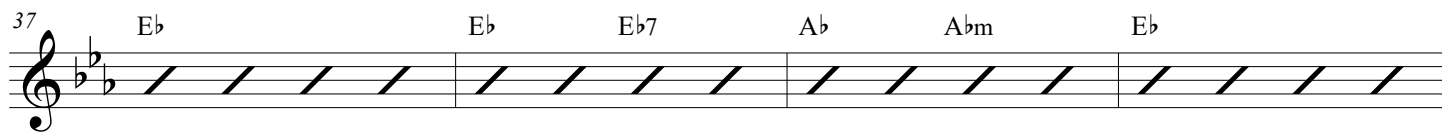
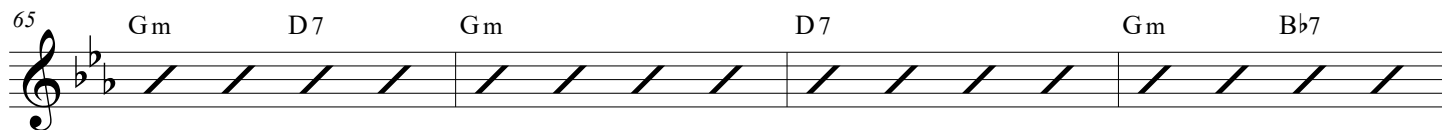
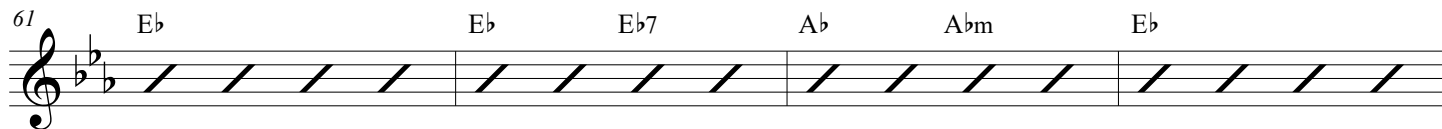
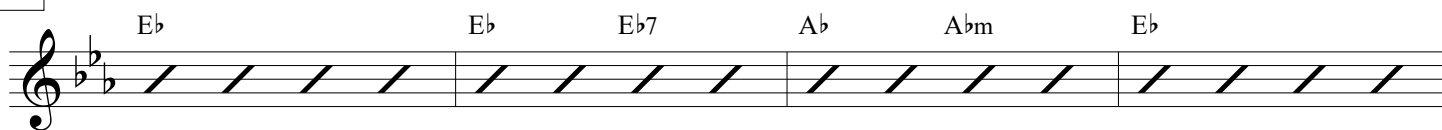
17 F7 Bb7

B

Eb Eb Eb7 Ab Abm Eb

25 F7 Bb7

29 Eb Eb Eb7 Ab Abm Eb

**C** Piano solo

69 Eb Eb Eb7 Ab Abm Eb

73 C7 F7 F7 Bb7

77 Eb Eb Eb7 Ab Abm Eb

81 Ab A° Eb C7 F7 Bb7 Eb

D Trumpet solo

85 Eb Eb Eb Bb7

89 Eb7 Ab Eb Bb7 Bb7 Eb

93 Eb Eb Eb Bb7

97 Eb7 Ab Eb Bb7 Bb7 Eb

E Eb Eb Eb7 Ab Abm Eb

