

THE LANTERN

THE STUDENT VOICE OF OHIO STATE UNIVERSITY

TUESDAY
FEBRUARY 10, 2004

TONIGHT:
CLOUDY
LOW 22

TOMORROW:
PARTLY CLOUDY
HIGH 33, LOW 19

Kerry rivals wage effort to slow his momentum

Edwards, Dean and Clark look for surprising upsets

By Tom Raum
Associated Press

John Kerry's rivals tried yesterday to slow his brisk pace toward the Democratic nomination for president, with John Edwards and Wesley Clark searching for upset wins in two Southern states and Howard Dean beseeching Wisconsin voters "to keep this debate alive."

As Edwards and Clark concentrated on Virginia and Tennessee, which hold primary elections on Tuesday, Kerry ignored his rivals as he campaigned in Virginia and criticized President Bush's foreign policy.

"We deserve a president who understands that working with the rest of the world is not weakness — it is strength," Kerry said, speaking in front of a Roanoke, Va., fire station. The senator from Massachusetts accused Bush of failures on North Korea, AIDS, global warming and the Middle East peace process.

Edwards and Clark were hoping strong showings in Tennessee and Virginia would eliminate the other and turn the race into a two-man contest with Kerry. But polls showed Kerry well ahead in both states.

Dean, the former Vermont governor who was once the party's front-runner, urged Wisconsin voters to prove the polls and the media wrong in that state's Feb. 17 primary and use their "power to choose the strongest candidate to beat George W. Bush."

"The media claims this contest is over. They say your voice and your vote don't count. They expect you to rubber stamp the choice of others. But you don't have to listen to them," Dean told an audience of about 300 at a downtown Madison hotel.

Dean began a two-day tour and an aggressive advertising campaign in Wis-

SEE DEMOCRATS PAGE 2

Sharing a home may not lead to marriage

By Luke Robson
Lantern staff writer

Cohabitation can be thought of as a couple testing the waters before taking the plunge into marriage.

A new study unearthed the surprising results that 40 percent of cohabiting couples take their relationships to the next level with marriage and 42 percent disagree on the future of their relationships.

"I was wondering how couple-level agreement regarding plans for the future, particularly marriage plans, affected whether cohabiting couples actually married," said Sharon Sassler, co-author of the study and assistant professor in the Department of Sociology.

"When you see women's magazines at the checkout counter at the grocery store, they always make it seem like women are trying to chase down men and get them to marry, while men are hiding under rocks or are commitment-phobic," she said. "But that's just something put out there by women's magazines, not supported by research."

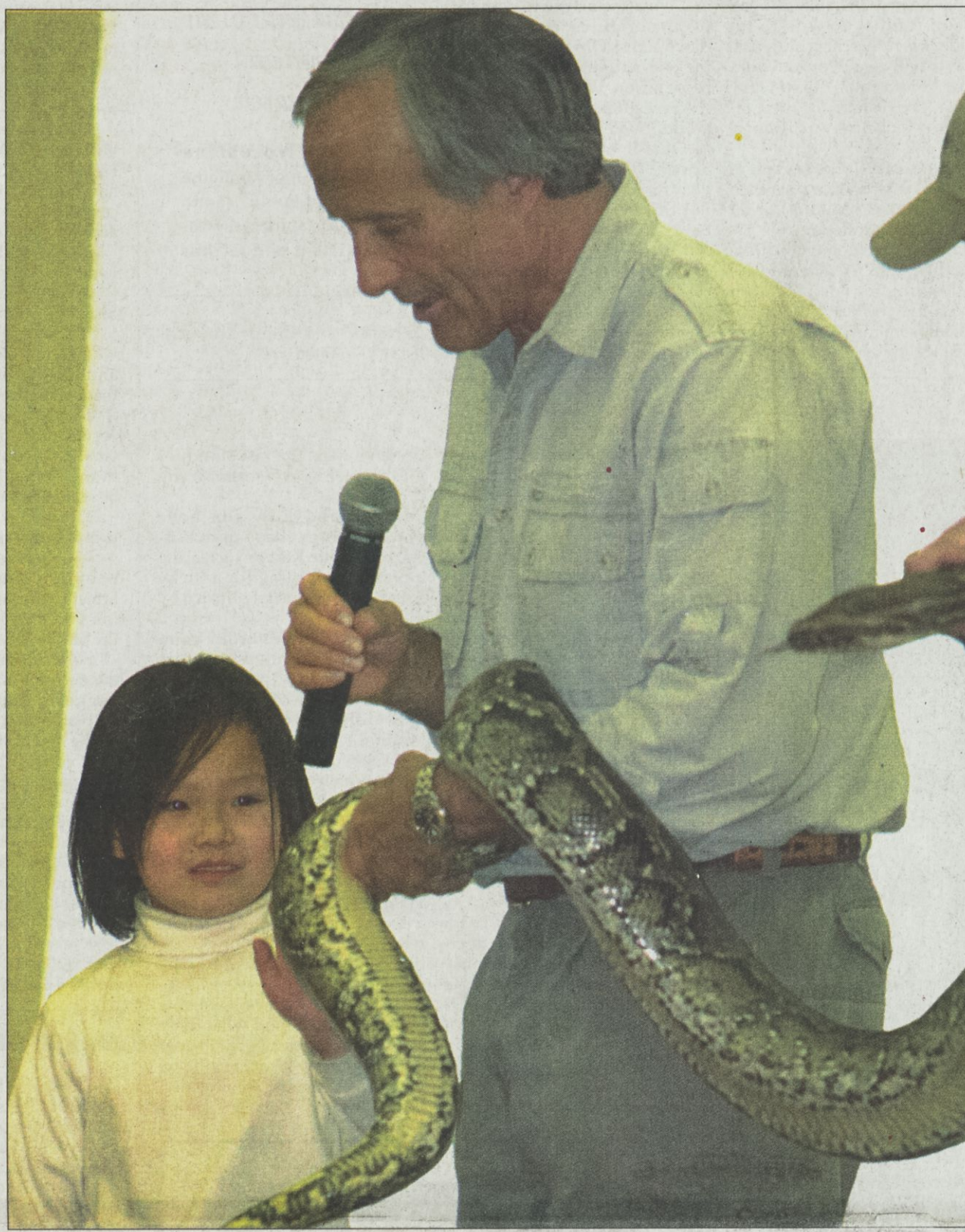
Sassler decided to find the truth. "You could call it a test of the *Glamour-Cosmo* hypothesis, that men just don't want to marry," she said.

The study acquired its information from the National Survey of Families and Households. Information was collected from 13,008 people, 670 of which were cohabitants. The survey returned four to seven years later to conduct second interviews with each of the participants, Sassler said.

Sassler found 350 people initially questioned did not provide a complete second interview. The majority of those cohabitants whom replied had the highest level of education and income, she said.

What remained was a set that excluded those who were poorer and less educated. This data had to be repaired for the sake of accuracy. To do this, the information from the known population was analyzed and a hypothetical outcome was formed for each original interviewee who did not participate in the second interview, Sassler said.

SEE MARRIAGE PAGE 2



MELANIE WATKINS/THE LANTERN

Jack Hanna shows a boa constrictor to a girl from the audience yesterday. Hanna showcased a number of animals from around the world during his presentation in the Ohio Union.

Critters come to campus

Hanna brings a host of animals to entertain, educate overflow crowd

By Jessica Herzfeld
Lantern staff writer

The Ohio Union Ballroom was turned into an animal menagerie last night when Jack Hanna, director emeritus of the Columbus Zoo and Aquarium, was a guest lecturer to a crowd of more than 700.

Before beginning his presentation, Hanna developed a friendly rapport with the crowd, shaking as many hands as he could and taking pictures with the audience.

Hanna brought videos and — to the crowd's delight — a variety of exotic animals. Hanna said he uses lecturing opportunities to educate people

about animals and preservation.

"We try to show you what animals are doing in the world," Hanna said. "All the animals I have are really what I call ambassadors for their cousins in the wild. They're here to educate."

During his presentation, Hanna discussed issues like poaching, hunting and the purpose of zoos — topics that have been controversial among various groups of animal rights activists.

Among the wildlife featured at the lecture was a clouded leopard, a macaw parrot, a cockatoo, a palm civet, an alligator, a prehensile-tailed porcupine, a European barn owl, a toad, a python, hissing cockroaches, black-footed penguins and — the finale — a cheetah.

The animals used in this presentation, along with any other promotional event, are part of a special group of animals that are not displayed at the zoo.

"These 13 animals that were here tonight are part of 60 different animals (used in promotions)," said Brian Greene, Hanna's promotional assistant.

The show animals are hand-raised by Greene and other zoo workers. They work so closely with the animals that they have the ability to determine whether the animal's mood will be dangerous on any particular day of a presentation, Greene said.

The audience took delight in some unscripted and unpredictable moments, especially when audience participation was involved.

A female audience member nearly burst into tears when Hanna called her up and prepared her to be introduced to the python. Instead, he surprised her and let her hold the toad and hissing cockroaches, which she was not afraid of.

SEE HANNA PAGE 3

Experts: Shooter's move part of strategy

By Mark Williams
Associated Press

Sniper shootings that for months have been concentrated at the bottom of the city are moving south down another busy interstate, which experts see as evidence of both logic and daring on the part of the gunman.

The growing target area could be part of a strategy to throw off the police and "freak out an additional portion of the population," N.G. Berrill, a forensic psychologist associated with the John Jay College of Criminal Justice in New York, said yesterday.

The serial shootings — 23 in all — began in May, though most have occurred since mid-October. The only person hit was killed.

Bullets have shattered windshields, flattened tires and pierced the bodies of cars, vans, delivery trucks and tractor-trailers. Shots have dented school buses and broken a school window. Homes also have been hit, with one bullet found in a bathtub.

Until last month, the gunfire was scattered along or near Interstate 270, a



AL BEHRMAN/AP

A Fayette County deputy sheriff sits on the Brock Rd. overpass over I-71 yesterday near Jeffersonville where a shooter fired on motorists Sunday.

busy highway that encircles Columbus.

The last four cases, including two shootings on Sunday, skipped outside that area, moving progressively farther southwest on Interstate 71. The freeway bisects the state from Cincinnati to

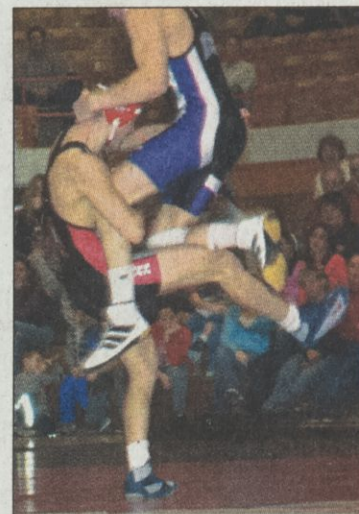
Cleveland and carries an average of 34,000 vehicles a day in the area, according to the Ohio Department of Transportation.

SEE SHOOTER PAGE 3



Out to prove something

MFA graduate exhibition opens with students exhibiting style specific
ARTS 2nd section



Buckeyes split matches

OSU's Tommy Rowlands win over Northwestern put him on top in the record books
SPORTS page 8

USDA calls off search

Veterinarians confident remaining cows pose little threat of mad cow disease
NATION page 5

THE LANTERN
.com

ACTION ON THE MATS:
For video highlights of this weekend's wrestling match, click on "Sports"
www.thelantern.com

CLASSIFIEDS IN THE SECOND SECTION

lantern@osu.edu
NEWSROOM (614) 292-5721
EDITOR: MATT DUVAL
NEWS EDITOR: KYLE WOODLEY
OPINION EDITOR: JENNIFER MARIN
WIRE EDITOR: BEN NANAMAKER
CAMPUS EDITOR: AMY C. MCCULLOUGH
CAMPUS EDITOR: MANDY ZATYNSKI
SPORTS EDITOR: MELANIE WATKINS
ARTS EDITOR: IAN M. JAMES
PHOTO EDITOR: ADAM GODFREY
ASST. PHOTO EDITOR: MORGAN WONORSKI
GRAPHICS EDITOR: ALYSIA BAKER
INTERNET EDITOR: JOHN MAY

NEWS FAX (614) 292-5240

ADVERTISING (614) 292-2031
FAX (614) 292-3722

122nd year, No. 98
Printed on recycled paper

OSU place to be for medical students

By Jarod Wilt
Lantern staff writer

The Ohio State College of Medicine and Public Health applicants are suggesting to the world of medicine that OSU is the place to be.

The number of applicants to the college has risen 14 percent from last year. In 2003, there were 3,293 applicants compared to this year's numbers increasing to 3,803 applicants. Secondary applicants — those who have chosen OSU as a top choice or finalist — also have increased 29 percent with 1,989 for 2003 compared to 2,809 this year.

"This demonstrates applicants across Ohio are looking at OSU Medical School in a dramatic drive," said Mark Notestine, assistant dean for admissions and records for the College

of Medicine and Public Health.

The college is ranked 37th nationally according to the U.S. News World Report and has recently moved up to 14th out of all public medical schools, Notestine said.

"Students have great opportunities here at Ohio State. They have the ability to work with world-class researchers and have the ability to see everyday and exotic conditions," said Gary Snyder, spokesman for the College of Medicine and Public Health.

"We are one sleeping giant in the field. It is on the rise with great education and great research," Notestine said.

Rankings are not everything, Notestine said. Applicants are also looking for cost, location and faculty.

"I am from this area, and I got a great feeling on my interview. I

chose to come here because of the great curriculum and the great network of physicians," said Erica Drennen, first-year medical student.

With seven other Ohio schools in the field, the level of competition has increased.

"We are starting to compete for the brightest and best students across Ohio while competing on a national level. With this recognition, we are able to take the best students from across the world," Notestine said.

Out of all applicants that apply, 700 were selected this year for an interview screening. For this year's class, 210 applicants were selected to attend. Notestine added this was the fourth-largest class of any medical school.

"This college has a great teaching hospital with a great program. Doctors care for

"We are one sleeping giant in the field. It is on the rise with great education and great research."

Mark Notestine
College of Medicine
and Public Health
assistant dean for
admissions and records

patients and help students learn," Drennen said.

Students need after-hours care

By Patrick Cain
Lantern staff writer

Student Health Services at Ohio State offers a vast range of medical care while maintaining low fees, but their accessibility may be anything but a model of perfection for Big Ten health programs.

Inevitably, every student will have to deal with Student Health Services, whether it is having to be treated, or simply canceling the insurance on an account statement.

Some students who have used health services have walked away frustrated and confused at the service they provide.

"I don't get it. We're students who go to class during the day and if we get sick, we'll go see them at night or on the weekend — exactly when Student Health Services isn't open," said Jeanne Goshe, an undecided sophomore. "Whenever you need to be seen, you can't be."

The program is far more complex than it seems.

"We serve nearly 60,000 people a year — that must attest to our availability," said John Ford, assistant director of the Student Health Services.

Ford said he does recognize the need for after-hour care and suggests that students seek help at local urgent care clinics or the emergency room. Under the comprehensive health insurance, which costs \$1,065 per year, these have a respective copayment of \$25 and \$75.

The University of Cincinnati, where the students pay \$957 per year, has also faced similar complaints.

"We tried evening hours a few years back," said Dr. John Andrews, director of Cincinnati's Health Services. "The

patients weren't coming in because they needed to, but simply because the wait was less."

Cincinnati does offer a 24-hour, seven-days-per-week phone service with a licensed physician who has the ability to, but rarely will, prescribe medicine over the phone.

Four of the eleven schools in the Big Ten maintain at least some open hours during the weekend. Northwestern University has the greatest availability — 8 a.m. to 11:30 p.m., the entire week.

"We do it because we think it's a nice service," said Don Misch, assistant director of Student Health Services at Northwestern. "A lot of the availability for schools depends on location. If you're in larger city, those in need can find help other places if they have to."

Student health insurance at Northwestern is \$1,397 per year.

Misch, Ford and Andrews agree that cost is the primary factor in determining availability.

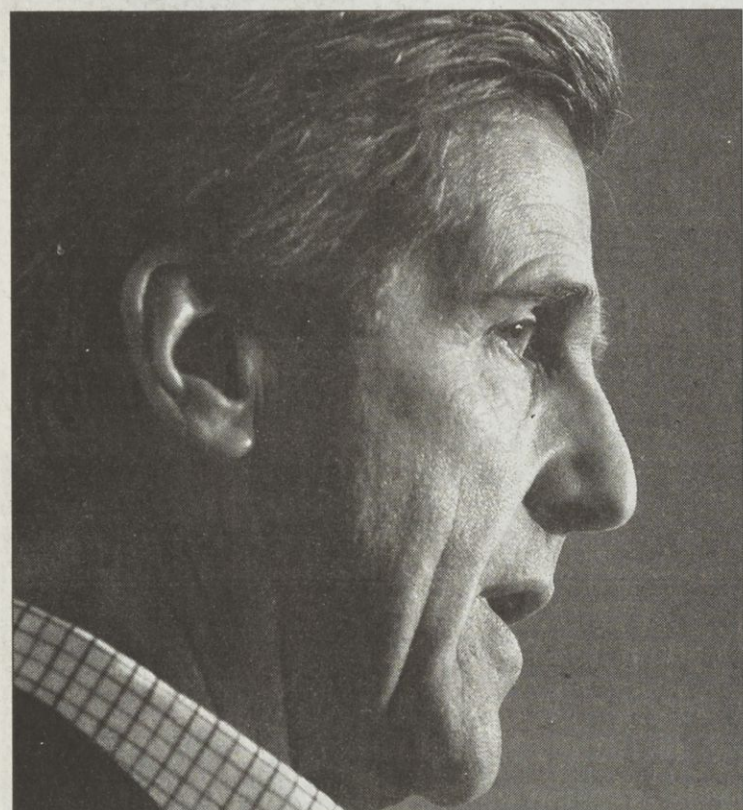
"We are funded primarily on a fee-per-service system," Ford said. "OSU does not charge students a health fee like most schools."

There is no student health service fee beyond the insurance cost at either Northwestern or Cincinnati.

"Excellent care, excellent access with the least cost is the mantra," Andrews said. "When the medical center is open on the weekends and in the evening, per patient care given makes it more expensive for everyone."

The attitude at OSU is similar. "In a perfect world if cost was not an issue, everyone would have evening hours," Ford said.

DEMOCRATS FROM PAGE 1



CHARLES KRUPA/AP

Democratic presidential hopeful Sen. John Kerry, D-Mass., talks to reporters during a press availability in Memphis, Tenn. yesterday.

consin, which he says he must win to keep his candidacy alive. But Kerry's winning streak — he handily won contests over the weekend in Michigan, Washington state and Maine — was clearly taking a toll on his competitors.

Aides to both Clark and Edwards said they expect their candidates to lose Tuesday in Virginia and Tennessee, even though both had earlier been optimistic about winning in their home region. Some 151 pledged delegates are at stake in the two states.

Edwards and Clark each have one win apiece, while Kerry has won 10 of the 12 contests thus far. Kerry has more than twice as many delegates as Dean, his closest pursuer.

Edwards, a senator from North Carolina, scored a decisive win in last week's primary in South Carolina, where he was born. Clark, a retired four-star general raised in Arkansas, won in Oklahoma on the same day, narrowly edging Edwards.

Wisconsin's Feb. 17 show-

down may be the last stand for all three of Kerry's remaining rivals.

Clark and Edwards have vowed to forge ahead until Wisconsin despite Kerry's increasing advantage, hoping for a lucky break or a potential slip-up by the front-runner.

Clark spent yesterday campaigning in Tennessee while Edwards was in Virginia. Both focused on the loss of U.S. jobs as they courted Southern voters.

In Morrison, Tenn., Edwards met privately with Carrier Corp. factory workers who found out last week that the plant was closing, eliminating 1,300 jobs. He said after the meeting at a barbecue restaurant near the plant that the workers deserve to have a president "who understands, who knows what their lives are like" and that President Bush is out of touch.

"The president we have now does not understand what these folks are going through. He does not understand what is going on in the lives of most Americans," Edwards said.

TRUE MUSIC

Newport

MUSIC HALL NIGHT CLUB

"America's Longest Continually Running Rock Club"

ON SALE NOW!

College Night
feat. The Favors w/
Rose Hill Drive,
Proximity Grey, &
B.A. Baracus

Thu. Feb. 12

Fri. Feb. 13
HENRY ROLLINS
AN EVENING OF ROCK AND ROLL
SHOCK AND AWE

NORTH MISSISSIPPI ALL-STAR

Sat. Feb. 14

Comedian:
stephen lynch

Fri. Feb. 20

Outback Concerts Presents...

YMSB
Yonder Mountain String Band

Sat. Feb. 21

Blue October & X-Rated Cowboys

Fri. Feb. 27

Blitz 24 presents...

PUDDLE OF MUDD
LIFE ON DISPLAY TOUR
(Changed from March 3)

Tue. Feb. 24

skoostik hookah

Sat. Mar. 6

...AND COMING SOON TO

PromoWest Pavilion

405 NEIL AVE.
www.promowestpavilion.com

2/14 A Valentine's Evening w/ Keri Noble

2/18 Rufus Wainwright w/ Joan As Police Woman

2/20 Wish You Were Here (Pink Floyd Tribute)

Tickets available at the Newport box office and all Ticketmaster locations, charge by phone at 431-3600, or on-line at www.ticketmaster.com. For more info call the Concert Hotline at 358.ROCK or go to www.newportmusicall.com

fat Eddie's The place to be before and after all Arena District Events.
(Next to the PromoWest Pavilion) 614.224.2430
Don't Miss Ladies Night This Fri. www.fateddiesbar.com
Outrageous Drink Specials All Night long!

JEFFERSON COMMONS

unique student apartments

Home is where your FRIENDS are.

Come on and Check Us Out!

- Individual Leases
- 1, 2, 3 & 4 Bedroom Apartments with Private Baths
- Washer/Dryer in Every Apartment
- Extended Basic Cable with HBO
- Community Fitness Center with Free Weights
- Upgraded Internet Access
- Billiards/Game Lounge
- Sparkling Pool with Jacuzzi
- Student Computer Center
- Covered Parking Available
- Tanning Bed
- Amenities, Rents and Incentives are subject to change.

Rates starting at \$419

1150 Kinnear Rd. Columbus, OH 43212 www.jeffersoncommons-columbus.com Call for more information 614-486-4222

MARRIAGE FROM PAGE 1

The statistical technique is the first time such an application has been used.

"We think that our repaired sample gives us a better grip on the real outcomes of cohabitants, rather than a rosier picture of what proportion marry when you focus only on the cohabitants with the best economic characteristics," Sassler said.

The results of this study suggests men who marry and men who decide to cohabit are different, she said.

"I find it interesting that men who want to marry more than their female partner are no more likely to actualize their desires to marry than are couples where the woman has more definite plans about marriage," Sassler said. "Those couples that disagreed regarding future plans were significantly more likely to break up than marry."

"I found out after moving in with the guy I loved that I could never marry him. He was

obsessed with walking down the aisle. I was only twenty-one," said Elizabeth Whigman who lived with her boyfriend for three years.

"We broke up because I just wasn't ready for that kind of relationship. I'm still not," she said.

Couples should discuss future plans together before signing a lease, Sassler said.

"Couple level agreement was one of the strongest predictors of the study," she said.

Adam Cummins, an undecided freshman, and Kimberly Schwartz, a senior in music education, have dated and lived together for six months, but have been friends for four years.

"I really hope to marry Kim one day. I want everything to work out," Cummins said.

"I love Adam and really care for him, but who knows what the future holds? We'll just take things day-to-day and see what happens. I'm open to anything," Schwartz said.

Family Practice for Dogs and Cats

Campus Area since 1972
2 blocks east of High Street

CHITTENDEN VETERINARY CLINIC

Student Oriented
Affordable
Evening and Saturday Hours

239 Chittenden Ave. 294-3106

Valentine Feature "Cupid Bear Delight"

6 Vased Roses, Winged Cupid Bear & Free Box of Chocolates

\$43.95 + Tx & Service

In Store Cash & Carry Rose Special 12 Rose Bouquet **\$27.95** Wrapped Roses

Boxed Roses \$39.95
Vased Roses \$53.95
See Many, Many More Valentine Items

When You Call We Deliver! Guaranteed! Call or Click 24/7

On Our Website **Alwood.com**

Alwood Florist
www.alwood.com

7059 E. Main St. 759-0000 757 Bethel Rd.

Graduates' salvation lies in exam courses

By Patrick Cain
Lantern staff writer

For students considering graduate school, the culmination of four years of college boils down to one career-specific exam — and many have a do-or-die attitude.

"You can't gain admittance without the exam; it's essential," said Craig Galanter, a senior in criminology who is preparing to take the Law School Admissions Test.

Future law school applicants are not the only students begrudging their fateful day; the Medical School Application Test is also a time-consuming exam.

"I'm taking the MCAT because it's required. There's no other reason I'd subject myself to such an awful experience," said Scott McCarty, a junior in biology.

Even though the next MCAT is not until April 17, many stu-

dents have begun enrolling in classes offered by companies such as Kaplan or Princeton Review. Students are also enrolling for the March 13 Graduate Record Exam and the June 14 LSAT.

Typical class costs range from \$949 to \$1,499. Along with the hefty price tag, the companies offer a satisfaction guarantee.

"If they are not happy, we will work with them again for free," said Tony Nguyen, assistant director at Princeton Review in Columbus. "We usually see about a 10 percent comeback. The majority of the students are very happy with their initial scores."

In May, Princeton Review will offer a free outreach program, which will help outline the exam. In this one-time class, they will disclose some of the many test-taking strategies.

"Training for a standardized exam is like training for boot

camp — you can't think outside the box. It's all about linear thinking and understanding the nature of the test," McCarty said. "Besides showing me how to approach it, the classes make me study."

The Princeton Review and Kaplan classes say that an individual's score will increase an average of seven points on the LSAT, 210 points on the GRE or 10 points on the MCAT.

Kaplan says 79 percent of students who were accepted into medical school took its class.

Along with the exam scores, a student's grade point average is important. Students are expected to go into the classes with an exemplary knowledge of the college courses they have taken.

"It won't teach you the secrets of organic chemistry or anything like that, but it will teach you the secrets of the test," McCarty said.

HANNA FROM PAGE 1

"You just touched something dangerous," Hanna said. He emphasized that people are so often afraid of harmless creatures, like certain snakes, and are unafraid of the treacherous ones.

Best known for his work at the zoo and his television appearances on talk shows and "Jack Hanna's Animal Adventures," Hanna loves his unusual career.

"I have fun (working on television). I enjoy teaching people about animals," he said.

Hanna particularly takes advantage of lecturing at colleges.

"I enjoy it because a lot of the young people today are the ones who will be making critical decisions about our wildlife and resources. I try and bring animals to show people about what an endangered species means," he said.

While he loves the adventures his job lands him, Hanna told the audience that it is a lot of work. He travels to places all over the world — he's been to every continent at least once — and he films 26 episodes of his own show per year.

"My home is (Columbus), my office is (in Columbus), but I'm on the road about 240 days a year," he said.

The lecture was a special event put on by the Ohio Union Activities Board.

"We wanted OSU students to have an unusual experience with exotic animals that they may have only seen on TV," said Danny Eck, special events chair for OUBA. "At the same time, we wanted students to learn something about the animals and their habitats and the importance of their protection and prosperity."

Ryan Mason contributed to this story.

SHOOTER FROM PAGE 1

"The logical thing is to go down the road a bit," where people would be less concerned, Berrill said.

Serial criminals often start in the area where they are live or work, said Clint Van Zandt, a former FBI agent who examined patterns of criminal behavior. As they continue to be successful, they will move out of their comfort zone and become more emboldened, he and other experts said.

"He likes the challenge," Van Zandt said. "He likes the possibility of being caught. He likes beating the authorities."

"It's obvious our target area has increased," Franklin County Sheriff's Chief Deputy Steve Martin said Monday. Still, he said authorities continue to believe that the original area remains important.

"This particular individual is definitely getting more brazen," he said.

The shootings have happened at various times of the day and night. Gail Knisley, 62, of Washington Court House, was hit Nov. 25 as she was being driven by a friend to a doctor's appointment at midmorning.

Investigators say some of the shots have been fired from highway overpasses. The same gun was used in at least eight of the shootings.

On Sunday, a minivan and a Mercedes were hit on I-71 about 40 miles southwest of Columbus. The nearby village of Jeffersonville is home to two popular outlet malls and surrounded mainly by farmland.

HIGHER ED BRIEFS

OU digs deal with Ohio Valley Coal

The Post — Ohio University has reached a settlement with the Ohio Valley Coal Company and the Ohio Division of Mineral Resources, withdrawing its appeal of a mining permit for campus-area Dysart Woods. The settlement will allow the Ohio Valley Coal Company to mine under the woods.

In exchange for dropping the appeal, OU will receive three monitoring wells and a \$10,000 grant from the Ohio Department

of Natural Resources to assist in a "Water Balance Study" of Dysart Woods. The university owns the forest, but not the mining rights to the forest. The woods are among the last .004 percent of old growth forest left in Ohio.

Hot wax for more than smooth legs

The Miami Student — A fire that occurred at an off-campus student residence on Feb. 3 injured two University of Miami students, sending one to the hospital. Junior Lindsay Mack was treated for

first-degree burns on her shoulder and released later that night.

One of the four students who lived in the house was working on an art project in the kitchen, which required cooking wax on the stove. The wax caught fire and exploded, setting the room ablaze and filling the house with smoke.

Officials have estimated the damages to the home at \$10,000.

Michigan confirms stomach flu cases

The Michigan Daily — The University of Michigan's Depart-

ment of Occupational Safety and Environmental Health has confirmed that over 70 students have contacted viral gastroenteritis, which is more commonly known as the stomach flu. The total does not include another batch of sick students, still yet to be confirmed as part of the outbreak.

Two separate outbreaks of the disease have occurred in two separate residence halls, and school officials are scrambling to discover whether the two outbreaks are of the same strain. To deter the spread of the virus, facilities staff mem-

bers have been disinfecting high-contact surfaces in the residence halls that are handled by many students, such as door-knobs, water fountains, handrails and push-plates on doors.

Wristbands or handcuffs at PSU

The Collegian — Students at Penn State University who plan to drink at fraternity parties had better start bringing their ID. In a new decision handed down by the Interfraternity Council, stu-

dents consuming alcohol at fraternity parties must have wristbands signifying that they are of legal drinking age.

The new policy will also enforce social monitors, fraternity members trained by the IFC, to attend social events and ensure all requirements are met.

Houses found in violation of the new policy will face punishments, depending on the severity of the offense. The new program is slated to take effect within the next semester.


— compiled by Adam Jardy

HOWARD'S BARBERSHOP
An OSU Tradition
Reg. Cut: \$10.00
Flat Top & Razor Cut: \$11.00
1486 W. Lane Ave.
488-8645
Weekdays 8:30 - 5:30
Saturday 8:00 - 2:00
Parking in Rear

The Big 10 at the "Shoe"
Allied Health Career Fair
All ten programs at one location
Learn more about: Physical Therapy, Respiratory Therapy, Medical Dietetics, Health Information Management, Medical Technology, Circulation Technology, Athletic Training and more.
Wednesday, Feb. 18, 2004
2:00 - 4:00 pm
The Ohio Stadium - Football Recruiting Room
More information at <http://amp.osu.edu>

Spring Classes begin March 29.
Apply and Register On-line.

You have to connect with your students.



Jonathon Baker,
Associate Professor,
Mathematics

"I feel that there's a certain rapport you work to establish with each student. Mathematics can be very rigid, very formal, so I use humor to make the class more enjoyable and to drive a point home. I think it puts the students at ease, so they learn more."

For more on how to make a Columbus State education work for you, call 614-287-5353 or visit our website at www.csc.edu.

COLUMBUS STATE
Community College

Education that WORKS.

SPRING BREAK '04
Get 'em while they're hot!



SPRING BREAK '04 PACKAGES
AIR + HOTEL package prices starting at

> LONDON	\$345
> accommodations are an add'l. \$21 / night	
> PARIS	\$435
> accommodations are an add'l. \$27 / night	
> CANCUN	\$529
> price is based on quad occupancy	
> MIAMI	\$249
> price includes tax and is based on quad occup.	
> AND MORE!	

Airfare is departure from Columbus. London package departs Mar. 17-25 with a return of Mar. 20-28, and does not include tax. Paris package departs Mar. 17-25 with a return of Mar. 20-27, and does not include tax. Cancun package does not include tax. Miami package does include tax. Price for all listed packages are based on quad accommodations. Price is per person, is subject to availability and taxes are not included. Blackouts and restrictions apply. Packages are only available to students, faculty and youth under 26.

1866 North High St. (614) 299.2455

cst# 1017560-40

exciting things are happening @
www.statravel.com

STA TRAVEL
WE'VE BEEN THERE.

Course in Social Impact
Spring Quarter 2004

The course is especially designed for the non-science student.

PLANT PATHOLOGY 201
(2 CREDITS)

The Social Impact of Plant Diseases
In Shaping Human Society

- Thursdays 3:00 to 4:48pm; 200 Kottman Hall
- Call No. 16230-2
- Instructor: Prof. Chuck Curtis
- More Information? Phone 2-4854, or email curtis.6@osu.edu

Believe it or not...plant diseases have had major impacts in shaping our culture and world civilizations. This course touches on the historic impact of plant diseases on art, religion, medicine, mysticism and science. In addition, the course covers bioterrorism, the vulnerability of the world food supply and constant warfare taking place just to stay one step ahead of global plant diseases. Student discussion topics include: poisons of the past, "Why do the British drink tea?", the impact of the Irish potato famine, the New York City police department, Salem witch trials and cases of mass hysteria leading to radical national social change. A field trip in class time is planned. An appreciation of science and science ethics will be covered but from a non-scientist perspective.

"2003" - Anonymous student evaluation comments:

- "Thanks for giving me a course that I looked forward to."
- "I enjoyed learning about the historical backgrounds of plant disease."
- "You do an excellent job focusing on the learning environment."
- "Learning brand new stuff" having a different atmosphere than boring lecture halls."
- "Definitely taught me a lot because I knew nothing about plants prior to this class."
- "The class was interesting and fun."
- "I appreciated the time and effort you put into this class."
- "I looked forward to this class!"

Trustees' Report to the Campus

Vol. XLVI No. 5 Actions by the Board of Trustees on Feb. 6, 2004. Trustees' Report contains actions or reports presented at the recent meetings of the Board or its committees. repared by the staff of the Office of University Communications, this report is an unofficial account and may not cover all agenda items. Official minutes are available through the Secretary of the Board, 210 Bricker Hall.

In brief, the trustees:

- Heard an update on the university's diversity efforts
- Approved \$2 million in gifts given to the university during December 2003 to establish 30 new named endowed funds. The board also accepted 175 research grants and contracts awarded to the university in November 2003, totaling more than \$25 million, and 262 research grants and contracts awarded in December 2003, totaling nearly \$26.7 million.

Ohio State leaders report on Community of Diversity Work, planning must continue to ensure a diverse learning environment

COLUMBUS — The development and growth of educational diversity at The Ohio State University must continue with efforts to reach an even broader audience, members of the Board of Trustees were told today (2/6) in a presentation to the Academic and Student Affairs Committee.

"Historically the focus of diversity at Ohio State has been directed toward the recruitment and retention of minority students," said Mac Stewart, vice provost for the Office of Minority Affairs. "But increasingly, our quest for diversity should be considered a journey rather than a goal, one that continuously changes with better understanding."

Stewart said progress can be difficult to measure, but national indicators and aggressive recruiting and monitoring prove that academic excellence and diversity can be jointly attained as prescribed in the university's Diversity Action Plan.

Ohio State's success has been noted in many publications and journals, including Hispanic Outlook, which ranks Ohio State 17th nationally in the number of doctorates awarded to Hispanics. Last year, the university ranked 39th. Stewart added that the Journal of Blacks in Higher Education recently ranked Ohio State highest among the nation's 25 leading business schools in minority enrollment. Enrollment in the Max M. Fisher College of Business is 10.3 percent.

Christine Ballengee-Morris, director of the university's Multicultural Center, outlined the center's short and long-term initiatives.

"Diversity can be explored as everyone's responsibility-- students, faculty and community," Ballengee-Morris said. "Diversity education becomes a part of world-making, which is an important element for all fields of study and careers."

The Multicultural Center offers four programs in the First Year Success Series that explore gender issues, race imagery, homophobia and cultural identity. Approximately 5,000 first-quarter students enrolled in one or more courses last year. Many others programs integrating student affairs with academic affairs are offered throughout the year.

"Our strategy is to be embedded in as many units and programs as we can," Ballengee-Morris said.

The Nationwide Diversity Leadership Transcript Program is a long-term approach that prepares undergraduates for leadership in a global society. The voluntary program incorporates academic courses, leadership and service opportunities, and programs that explore diversity. It is a model that many universities across the country are now adopting.

"Our charge is to integrate diversity in as many ways as we can to meet the needs of our students today and tomorrow, and through research in and out of the classroom," Ballengee-Morris said. "We do this through partnerships and collaborative practices."

The direction of diversity based on demographic shifts and its future role in a broader community was outlined to the trustees by John A. Powell, executive director for the Kirwan Institute for Race and Ethnicity and the Gregory H. Williams Chair in Civil Rights and Civil Liberties at the Moritz College of Law.

Powell said that Ohio is not likely to experience significant shifts in its minority population and that Ohio State must look beyond its charge for a diverse institution and work toward developing a more equitable community.

"Numbers are not the whole game," Powell said. "They do nothing to define how the human landscape will change for Ohio State."

He added that Ohio State has a broad commitment to diversity and that the Kirwan Institute will continue to work collaboratively.

"We will extend our relationships and practices with university and visiting scholars and researchers to deepen the understanding of racial and ethnic disparities and how to remedy them," Powell said.

Ohio State trustees meet, approve university matters, New doctoral programs authorized, mid-year budget report heard

COLUMBUS — Construction projects, personnel appointments, new academic departments and fiscal matters were among the items approved by The Ohio State University Board of Trustees at its first 2004 meeting Friday (2/6).

Trustees accepted more than \$2 million in gifts given to the university during December 2003 to establish 30 new named endowed funds. The board also accepted 175 research grants and contracts awarded to the university in November 2003, totaling more than \$25 million, and 262 research grants and contracts awarded in December 2003, totaling nearly \$26.7 million.

Named endowed funds

• The Emalou Brumfield Endowment Fund for Mathematics Education, \$466,846, provided by gifts from Emalou Brumfield (M.A., 1947) to support mathematics education in the

College of Education

• The Dr. William Fung Family Outreach and Education Endowment Fund at the Wexner Center for the Arts, \$250,000, provided by a gift from William Fund (Li and Fung Limited) to support the Wexner Center's education programs

• The Robert G. and Agnes M. Jung Memorial Fund, \$150,000, provided by a gift from the estate of Keith H. Jung (J.D. cum laude, 1970) of Columbus as a memorial to his parents, Robert G. Jung (B.S. Agr., 1940) and Agnes M. Davis (B.S.H.E., 1933), in support of the Chadwick Arboretum in the Department of Horticulture and Crop Science

• The George M. and Renee K. Levine Endowed Professorship Fund in Jewish History, \$145,480, provided by gifts from George M. (B.S.Bus.Adm., 1947) and Renee K. Levine to attract and/or retain a distinguished scholar to hold the Levine Professorship in the field of Jewish history in the College of Humanities

• The Samuel G. Swope Scholarship Fund for The Ohio State University Marching Band, \$100,000, provided by a gift from Samuel G. Swope (B.S.Bus.Adm., 1949) of Louisville, Ky., to provide five scholarships each year for members of the marching band.

• The Ronald D. Harris Endowment Fund for Excellence in Food Science and Technology, \$97,011, provided by gifts from Ronald David Harris (B.Ch.E., 1961; M.S., 1961) of Columbus to support lectureships in the Department of Food Science and Technology as well as food-related research projects and other activities

• The Muffin Sniadowski Student Research Endowment Fund, \$74,076, provided by gifts from the estate of Joanne Sniadowski of Chillicothe in honor of her beloved dog Muffin to award research funds for veterinary students

• The John and Ginny Elam Family Endowed Fund, \$69,300, provided by a gift from Virginia Elam for financial support of WOSU stations' programming

• The Leonard and Bess (Joseph) Burkett Memorial Scholarship Fund, \$59,321, provided by a gift from the estate of Bess Joseph Burkett Sieving (B.S.Ed., 1930) of Oregon, Ohio, for scholarship support

• The John H. Dunlap Jr. Fund for Education, Outreach and Development at Stone Laboratory, \$51,050, provided by gifts from Shirley Dunlap Bowser (B.S.Ed., 1956) and Cliff Bowser of Williamsport, the Kellogg Foundation and friends of Stone Laboratory in honor of Dunlap, a past member of the university's Board of Trustees, a 7th generation farmer and a nationally recognized agricultural leader. The fund will support education, outreach and development programs at Stone Laboratory at Lake Erie.

• Morris and Fannie Skitken Family Foundation Endowment Fund for Yiddish and Ashkenazi Studies, \$48,000, provided by gifts from the Morris and Fannie Skitken Family Foundation of Blacklick to support research and scholarships for students actively engaged in Yiddish and Ashkenazi studies

• Harold W. Almen Scholarship Fund in Chemical Engineering, \$37,413, provided by gifts from Harold W. Almen (B.Ch.E., 1931) of Oklahoma City, Okla., to provide scholarships to junior or senior students pursuing a bachelor's degree in chemical engineering

• The Sarah Schoessler Endowed Fund in Optometry, \$30,560, provided by gifts from John P. (B.S.Opt., 1965; O.D., 1966; M.S., 1968; Ph.D., 1971) and Jane A. Schoessler and their family, friends and colleagues in memory of Sarah Schoessler to advance the eye care needs of children with disabilities

• The Hilda Dierker Scholarship Fund, \$30,000, provided by a gift from Charles G. Mayer (B.S.Ed., 1940; M.A., 1947) of Tipp City to provide scholarships for music students interested in pursuing careers in public music education

• The Schoedinger Resource Initiative Fund, \$30,000, provided by gifts from Schoedinger Financial Services and Schoedinger & Co. to support a resource initiative for the Human-Animal Bond-Centered Education and Practice Program at the College of Veterinary Medicine

• The Lucy J. Schneiter Memorial Scholarship Fund in Nursing, \$27,695, provided by gifts from family, friends and colleagues of the late Lucy J. Schneiter (Cert. Grad. Nurse, 1941; B.S., 1959; M.S., 1966), including a gift from The Ohio State University Hospitals in honor of her years of service on the nursing staff of the Medical Center. Income will provide scholarship support in the College of Nursing

• The Kisker Scholarship Fund in Teacher Education, \$26,306, provided by a gift from Richard G. Kisker (B.A., 1970; M.A., 1975) in memory of his parents, Leroy E. and Frances E. Kisker, to provide scholarship support to students in the College of Education

• The Patrick Colonel Diabetes Research and Education Endowment Fund, \$25,945, provided by gifts from family, friends and colleagues of Nancy Lane Hensel (B.S.Bus.Adm., 1973; M.B.A., 1975) and in memory of Patrick Colonel to support research and education relating to the prevention, treatment and cure of Type 1 diabetes

• Linda R. Kurtz Scholarship Fund in Elementary Education, \$25,804, provided by gifts from Charles Jewett Kurtz III (J.D., 1965) in honor of his wife, Linda Rhoads Kurtz (B.S.Ed., 1969; M.A., 1972), to provide financial assistance to students in the College of Education

• The James T. and Jean (Casey) Mahoney Parkinson's Disease Research Fund, \$25,532, provided by gifts from James T. Mahoney (B.S.Ed., 1952; M.S. Education, University of Illinois, 1955) and Jean (Casey) Mahoney (B.S.Ed., 1942; M.A., 1956) of Columbus to be used by the Madden/National Parkinson's Foundation Center of Excellence for Parkinson's Disease at The Ohio State University in support of the advancement of medical knowledge in the field of Parkinson's disease

• The Dr. Rudine Sims Bishop Scholarship Fund in Children's Literature, \$25,312, provided by gifts from Rudine Sims Bishop to provide financial support for doctoral students majoring in children's literature in the College of Education

• The George and Cookie Ruff Family Athletic Scholarship Fund, \$25,311, provided by a gift from George E. Ruff (B.S. Agr., 1963) and his wife, Cookie, of Upper Arlington to supplement the student grant-in-aid scholarship costs of a member of the varsity football team pursuing an undergraduate degree

• The John and Mary Alford Memorial Fund, \$25,000, provided by gifts from Michael (B.S.Bus.Adm., 1978) and Barbara Cantlin to provide scholarship costs for a member of the varsity football team pursuing an undergraduate degree

• The Pat and Vince Aveni Dean's Innovation Fund, \$25,000, provided by gifts from Pat and Vince Aveni (B.S. Bus. Adm., 1947) of Gates Mills to be used by the dean of the Max. M. Fisher College of Business to promote initiatives by faculty and staff designed to increase the quality of teaching, research and involvement with the business community

• The Lorena and Mary Ann Johnston Memorial Scholarship Fund in Pediatric Advanced Practice Nursing, \$25,000, provided by a gift from Lance and Elaine Johnston of Reynoldsburg to support nursing scholarships for graduate students in the College of Nursing

• The Robert C. Leonhart Memorial Scholarship Fund in Industrial and Systems Engineering, \$25,000, provided by a gift from the Alfred and Frances Ross Foundation in honor of Mr. and Mrs. Ross' late son-in-law, Robert C. Leonhart (B.I.E., 1959) to provide scholarship support for industrial and systems engineering juniors and seniors

• The Dr. Ronald C. Rogers Scholarship Fund in Education, \$25,000, provided by gifts from Dorothy Bush Fox (B.S.Ed., 1933) through the Fox Foundation in honor of her son-in-law Ronald C. Rogers (M.A., 1982; Ph.D., 1983) to provide financial assistance to full-time doctoral students in the College of Education

• The Jean Trabue Tefft, Class of 1943 Endowed Scholarship Fund in Nursing, \$25,000, provided by a gift from Jean Trabue Tefft (Cert. Grad. Nurse, 1943) and Philip Wadsworth Tefft (B.C.E., 1940) to support nursing scholarships for graduate students in the neo-natal nurse practitioner program

• The Steven Tovar Family Athletic Scholarship Fund, \$25,000, provided by gifts from Steven Tovar (B.S.Ed., 2002) of Columbus to supplement the grant-in-aid scholarship costs of a member of the varsity football team pursuing an undergraduate degree

Change in description of named endowed funds

• Mager Family Scholarship Fund

• The James F. Patterson Land-Grant University Lectureship Fund

• The George P. Pettit, M.D., Scholarship Fund

Change in name and description of named endowed funds

• The Michael Shih-Yuan Chen Memorial Scholarship Fund is now the Dr. Michael Shih-Yuan and Anna Lee Chen Family Fund in Engineering

• The Edward F. Hayes Graduate Research Award Fund is now The Edward F. Hayes Graduate and Undergraduate Research Awards Fund

Personnel actions

• Hjojat Adeli has been named to The Abba G. Lichtenstein Professorship in Civil Engineering in the Department of Civil Engineering, effective July 1, 2003, through June 30, 2008. Adeli holds B.S. and M.S. degrees in civil engineering from the University of Tehran, Tehran, Iran, and a Ph.D. in civil engineering from Stanford University.

• Larry A. Anstine has been named executive director of The Richard M. Ross Heart Hospital, effective Feb. 16, 2004. He is currently serving as executive director of The Ohio State University Hospitals East. Anstine joined Ohio State in 1990 as director of the outpatient clinic after serving as a consultant with Arthur Andersen & Co. in Dallas.

• Christine Ballengee-Morris has been named director of the Multicultural Center, effective Jan. 1, 2004. She had been serving as the center's interim director. She holds B.S. and M.A. degrees in art education from Miami University and a Ph.D. in art education from Pennsylvania State University.

• Melvin D. Shipp has been named dean of the College of Optometry, effective June 1, 2004, through June 30, 2008. He currently is professor in the School of Optometry at the University of Alabama at Birmingham. Shipp earned his B.S. in zoology and a doctorate in optometry from Indiana University, the Master of Public Health degree from Harvard University, and the Doctor of Public Health degree from the University of Michigan.

• Linda K. Weavers, associate professor in the Department of Civil and Environmental Engineering and Geodetic Science, has been named to the John C. Guepel Chair in the College of Engineering, effective July 1, 2003, through June 30, 2008. Weavers holds a B.S. degree in civil engineering from the University of Minnesota and M.S. and Ph.D. degrees in environmental engineering from the California Institute of Technology.

• Karla S. Zadnik, Glenn A. Fry Professor in Optometry and Physiological Optics, has been named interim dean of the College of Optometry, effective Jan. 1, 2003, through May 31, 2004. She received her O.D. and Ph.D. degrees from the University of California, Berkeley School of Optometry and was on the clinical faculty of the University of California, Davis School of Medicine for 14 years.

• Karen D. Mlawsky has been promoted to executive director of The Ohio State University Hospitals East, where she is currently serving as associate executive director, effective Feb. 14, 2004. Mlawsky held various financial management positions with University Hospital beginning in 1991, including serving as the Hospital's controller for five years.

• Glenn S. Daehn has been appointed to The Dr. Mars G. Fontana Professorship in Metallurgical Engineering in the College of Engineering, July 1, 2003, through June 30, 2008.

• Fred D. Sack, professor of plant biology and plant botany, has been appointed chair of the Department of Plant Biology, effective April 1, 2004, through March 31, 2008.

• Beverly J. Moss, associate professor of English, has been appointed director of the Center for the Study and Teaching of Writing,

effective July 1, 2003, through June 30, 2007.

• Christian K. Zacher, professor of English, has been appointed director of the Center for Collaborative Research and Public Humanities, effective July 1, 2003, through September 30, 2007.

• Michael R. Grever has been appointed chair of the Department of Internal Medicine in the College of Medicine and Public Health.

• Elizabeth Cabot has been appointed as a citizen member of the Ohio State University Harding Hospital Board for a 2nd term, ending Jan. 31, 2007.

• Grayce M. Silis has been appointed as a citizen member of the Ohio State University Harding Hospital Board for a 3rd term, ending May 31, 2005.

Emeritus titles

• Allan L. Barta, professor emeritus in the Department of Horticulture and Crop Science, effective April 1, 2004

• Bruce L. Hull, professor emeritus in the Department of Veterinary Clinical Sciences, effective Feb. 1, 2004

• Allan E. Lines, professor emeritus in the Department of Agricultural, Environment and Developmental Economics, effective Feb. 1, 2004

• Roy A. Scott III, professor emeritus in the Department of Biochemistry, effective Feb. 1, 2004

• Ted H. Short, professor emeritus in the Department of Food, Agricultural and Biological Engineering, effective Feb. 1, 2004

• Norman J. Uretsky, professor emeritus in the College of Pharmacy (Pharmacology), effective Feb. 1, 2004

• James A. Visconti, professor emeritus in the College of Pharmacy (Pharmacy Practice and Administration), effective March 1, 2004

• Gary L. Bowman, associate professor emeritus in the Department of Veterinary Preventive Medicine, effective Feb. 1, 2004

• Morris G. Cline, associate professor emeritus in the Department of Plant Biology, effective Feb. 1, 2004

• Fred J. Deel, associate professor emeritus with Ohio State University Extension, effective March 1, 2004

• Mary Ann Sagaria, associate professor emeritus in the School of Educational Policy and Leadership, effective Feb. 1, 2004

• Alfred E. Staubus, associate professor emeritus in the College of Pharmacy (Pharmaceutics), effective April 1, 2004

• Wanema C. Flasher, assistant professor emeritus with Ohio State University Extension, effective March 1, 2004

• Michael Polasky, assistant professor emeritus in the College of Optometry, effective April 1, 2004

• Dona J. Schaffner, assistant professor emeritus with Ohio State University Extension, effective Feb. 1, 2004

• Walter B. Hull, assistant professor-clinical emeritus in the Department of Obstetrics and Gynecology, effective Feb. 1, 2004

• Victor R. Vermeulen, clinical associate professor emeritus in the Department of Otolaryngology, effective Feb. 1, 2004

Resolutions in memoriam

• John P. Bendekovic, associate professor emeritus in the College of Social Work, who died on Sept. 4, 2003

• Thomas J. Byers, professor emeritus in the Department of Molecular Genetics, who died on Sept. 21, 2003

• Nancy Moore Krueger Clatworthy, associate professor emeritus in the Department of Sociology, who died Nov. 27, 2003

• Wesley L. Furste II, M.D., clinical professor emeritus in the Department of Surgery, who died on Dec. 13, 2003

• Margaret H. Hines, associate professor of anatomy and radiology in the School of Biomedical Science and the College of Medicine and Public Health, who died Jan. 7, 2004

• Harold E. Kaeser, associate professor emeritus in the Department of Animal Sciences, who died Oct. 15, 2003

• James M. Kittelson, professor emeritus in the Department of History, who died on Nov. 10, 2003

• James E. Lantz, professor in the College of Social Work, who died on Dec. 20, 2003

• Harry E. Phillian, professor emeritus in the Austin E. Knowlton School of Architecture, who died Nov. 1, 2003

• Merle E. Scheetz, associate professor emeritus in the Ohio State University Extension, who died Jan. 15, 2004

• W. Wallace Stover, instructor emeritus in the School of Physical Activity and Educational Services, who died Dec. 26, 2003

• Virginia M. Vivian, professor emeritus in the Department of Human Nutrition and Food Management, now known as the Department of Human Nutrition, who died Nov. 15, 2003

Construction projects

Trustees authorized the university to enter into design services for the following projects:

• Improvement of pavements, landscaping and site furnishings in the South Dorms area. Preliminary cost estimate is \$1,175,000 with funding to be provided by Student Affairs local funds and House Bill 675.

• Repair and renovation of certain roofs on the Mansfield Campus. Preliminary cost estimate is \$292,500 with funding to be provided by House Bill 675 and North Central Technical College.

• Upgrade of the steam injection system at the McCracken Power Plant to better serve campus utilities requirements. Preliminary cost estimate is \$700,000 with funding to be provided by future university bond proceeds and debt service to be paid by an increase in the central utility assessment.

• Construction of a soil microbial ecology laboratory in the basement of the Parker Food Science and Technology Building, 2015 Fyffe Court. Preliminary cost estimate is \$450,000 with funding to be provided by the College of Food, Agricultural and Environmental Sciences general funds.

• Renovation of space at University Hospitals East to relocate the Sleep Disorder Center from Rhodes Hall. Preliminary cost estimate is \$1.15 million with funding to be provided by University Hospitals East auxiliary funds.

• Upgrade of fume hoods and related ductwork in a number of classroom buildings. Preliminary cost estimate is \$765,000 with funding to be provided by House Bill 675.

Trustees authorized the university to request construction bids for the following projects:

• Renovation of space at 650 Ackerman Road to accommodate the relocation of the Medical Center Data Center. Construction document project cost is \$5,129,479 with funding to be provided by University Hospitals

auxiliary funds.

• Replacement of the roof on the Animal Science Building, 2029 Fyffe Road. Construction document project cost is \$350,000 with funding to be provided by House Bill 675.

• Replacement of doors and jambs in Fisher and Gerlach Halls on the Max M. Fisher College of Business campus. Construction document project cost is \$140,000 with funding provided by House Bill 675.

• Construction of temporary buildings to hold laboratory mice during the Laboratory Animal Facilities project renovation at Graves Hall, 333 West 10th Avenue. Project cost is \$675,000 with funding to be provided by the Office of Research general funds.

• Expansion of the McCracken Power Plant Chiller to properly serve future buildings. Project cost is \$8 million with funding to be provided by future university bond proceeds with debt service to be paid by an increase in the central utility assessment.

• Installation of directional signs and vehicular wayfinding in and around the Medical Center. Construction document project cost is \$360,000 with funding to be provided by University Hospitals and future university bond proceeds with debt service to be paid by University Hospitals.

• Replacement of the hot water heating system at Pomerene Hall, 1760 Neil Avenue. Construction document project cost is \$350,000 with funding to be provided by House Bill 675.

• Phase II of roof replacement on the Veterinary Hospital, 601 Tharp Street. Construction document project cost is \$650,000 with funding to be provided by House Bill 675.

• Construction of a mechanical room for the installation of a Biocontainment Laboratory on West Campus. Revised project cost is \$2.75 million with funding to be provided by College of Medicine general funds.

• Build-out of 3rd floor shell space in Wiseman Hall, 400 West 12th Avenue to accommodate research staff. Construction document project cost is \$3,569,940 with funding to be provided by the Arthur G. James Cancer Hospital and Richard J. Solove Research Institute.

Cancer Hospital bylaws amended

The board approved a series of amendments to the Bylaws of the Medical Staff of the Arthur G. James Cancer Hospital and Richard J. Solove Research Institute that clarify language in order to achieve uniformity and alignment with current practice.

Honorary member of Heart Hospital board named

The board approved the naming of Elizabeth "Libby" McKeever Ross as an honorary member of The Richard M. Ross Heart Hospital Board, effective immediately. Ross currently serves on the Heart Center Campaign Committee, which is guiding the \$50 million campaign to support the hospital, named in honor of her late husband. She was awarded an honorary Doctor of Humane Letters by the university in 2002.

University representative to LabNet appointed

Trustees approved the appointment of Thomas C. Smith, director of University Reference Laboratories, to the board of trustees of LabNet of Ohio, a non-profit Ohio corporation that was formed to offer lab services of its members to managed care companies. The University Health System, as a member of LabNet, is entitled to appoint one trustee who will represent the interests of the university and its health system.

Audiology doctorate program established

The board approved the establishment of a Doctor of Audiology degree program, effective upon the approval of the Ohio Board of Regents. The program is necessitated by new standards put in place by the American Speech-Language-Hearing Association that now require a doctoral degree for certification in the practice of audiology. The proposed program will be the fourth to be established in the state of Ohio.

College of Allied Medical Professions adds degree program

Trustees approved the establishment of a Ph.D. degree program in Health and Rehabilitation Services, effective upon the approval of the Ohio Board of Regents. The interdisciplinary program in the College of Allied Medical Professions is designed to prepare health care professionals to become leaders, teachers and scholars in their respective fields of allied health. No similar program currently exists in the state of Ohio.

Two engineering departments renamed

The board approved changing the name of the Department of Computer and Information Science to the Department of Computer Science and Engineering and the name of the Department of Electrical Engineering to the Department of Electrical and Computer Engineering, effective immediately. Both name changes describe more accurately each department's focus and mission in the College of Engineering.

Hospital atrium named

Trustees approved naming the fifth floor atrium joining Rhodes and Doan Halls in the OSU Medical Center as the R. Reed Fraley Atrium, effective immediately. The board waived the requirement that three years must elapse before a structure can be named for a retired employee. Fraley served as vice president for health services and chief executive officer of the OSU Health System before his Jan. 31, 2004, retirement. Under his leadership, the Medical Center became a nationally recognized institution in the areas of patient care, health information delivery and customer service.

Heffner family honored

Trustees approved changing the name of the William G. Heffner Wetlands Research and Education Building to the Heffner Wetland Research and Education Building to reflect the involvement of the entire Heffner family in supporting the Wetland Research Park.

Competitive bidding requirements waived

The board accepted the quarterly report on waivers of competitive bidding requirements for October-December 2003. During that period, the senior vice president for business and finance granted 49 waivers for annual purchases totaling approximately \$5,168,700. The vice president for health services granted 28 waivers for annual purchases totaling approximately \$7,215,000. Waivers may be granted in the event of an emergency, when a sufficient economic reason exists or when goods or services can be purchased from only

a single source.

Easements approved

Trustees approved granting an easement to Ohio Bell Telephone Company, d.b.a. S.B.C. Ohio, for the construction of certain improvements, installations, enhancements, facilities and equipment related to providing telephone service to the Graduate and Professional Student Housing project. Trustees also approved granting a perpetual roadway easement to Pike County over and across .0375 acres of university land at the intersection of Shyville and Schuster Roads for

Mad cow danger waning; U.S. ends investigation

By Ira Dreyfuss
Associated Press

WASHINGTON — The Agriculture Department is ending its search for additional cases of mad cow disease even though officials have not found all the animals suspected of having eaten the potentially infectious feed believed to have caused the only known U.S. case.

"Our investigation is now complete," Dr. Ron DeHaven, the department's chief veterinarian, said yesterday. "We feel very confident the remaining animals — the ones we have not been able to positively identify — represent little risk."

The closure leaves officials not knowing what happened to 11 head of cattle among 25 that authorities say were most likely to have eaten the same feed as that given to a Holstein diagnosed in Washington state with mad cow after it was slaughtered on Dec. 9.

All 25 were among 81 born on a farm in Alberta, Canada, and shipped into the United States in 2001. Officials have found 29 of the 81, including 14 considered most at risk.

The search for the 81 cattle led authorities to 189 farms and ranches and the testing of 255 animals, none of which had bovine spongiform encephalopathy, or BSE, the technical name for mad cow disease, DeHaven said. Some may have gone to slaughter, but BSE tests would have spotted any slaughtered animal that had had mad cow, he said.

The likelihood of finding more cases "is pretty slim at this point," DeHaven told reporters during a telephone conference.

An international review panel created by Agriculture Secretary Ann Veneman said last week that U.S. officials had done a thorough job of searching for the animals but added that more focus should be put on prevent-

"We feel very confident the remaining animals — the ones we have not been able to positively identify — represent little risk."

Dr. Ron DeHaven
Agriculture Department

ing future cases.

The government also has found 2,000 tons of rendered protein into which tissue from the Holstein could have been mixed, said Dr. Stephen Sundlof, director of the Food and Drug Administration's Center for Veterinary Medicine, which regulates animal feed.

The material is being destroyed so none can make its way into animal feed, Sundlof said. Experts say meat and bone meal from infected animals can transmit mad cow's infectious protein to other animals.

The large amount of tissue had to be quarantined because processors commonly mix byproducts from many cattle. "It was impossible to distinguish that which just came from the cow from all of the material that was out there," Sundlof said.

Nonetheless, the size of the quarantine "indicates we would have captured any infectious material," Sundlof said.

The decision to end the search for potentially infected

cattle does not close the books on the case.

Officials do not know the source of the feed thought to have sickened the Holstein, and they cannot be certain that all America's 95 million cattle are free of mad cow disease. The international review panel warned of the probability of other cases.

Also unknown is what happened to all 10,410 pounds of meat that was recalled from the Washington state slaughterhouse that processed the Holstein and mixed its meat with that of 19 other animals. They expect some may have been eaten. However, the meat supply is safe, DeHaven said. USDA had said the parts of the Holstein that could have contained infectious material, such as the brain and spinal cord, were removed before processing.

The recall was initiated out of "an abundance of caution," DeHaven said.

Eating meat from animals with mad cow has been linked to a rare but fatal condition in people, variant Creutzfeldt-Jakob disease, although no cases have been traced to U.S. beef.

Beyond the domestic impact is the loss of crucial international markets, which had absorbed about 10 percent of U.S. beef production. About 50 countries have banned U.S. beef, its byproducts or live cattle. Among them are Japan and Mexico, America's best customers. Despite a procession of foreign visits by high-level U.S. trade officials, almost all the bans remain.

The government plans to follow up on initiatives to assure U.S. and foreign buyers that U.S. cattle will be safe from mad cow disease. The main bulwark is a 1997 ban on the feeding of cattle with protein or bone meal of cattle or other ruminants, such as sheep.

2 X TUESDAY

2 Large 1-Topping Pizzas

Valid
Tuesdays
Only!

\$ **9⁹⁹**

Delivery
or
Pick-Up



2183 N. High at Lane

297-0030

We Honor *Buck-I-D*

Open Daily 11AM - 3AM

Undergraduate Student Justices needed

USG is looking for students with out previous experience in USG to serve as an Undergraduate Student Justice or a Judicial Clerk on the USG Judicial Panel. An Undergraduate Student Justice hears any judicial matters that deal with USG, especially during election times. A Judicial Clerk coordinates hearings and keeps the Judicial branch organized. We are looking for students who are hard working, can be fair, have an interest in judicial affairs and are willing to give 2 or 3 nights for three weeks in Spring Quarter. The term of office for a Justice and Clerk lasts until graduation.

Applications are available in the USG Office (201 Ohio Union) and at www.usgonline.net

Applications are due in the USG office by Noon on Monday, February 16, 2004.

USG@SU

THE OHIO STATE UNIVERSITY
Undergraduate Student Government

Questions please call 292-2101



Look Your Best This Spring Break!

OSU Students Only Special

monarch | health

- First laser acne treatment free*
- First laser hair reduction treatment free* (lip/chin, neck, axillae [armpits], bikini); other areas 50% off first treatment
- All laser treatments FDA approved, safe and physician supervised.
- Complete skin care including facials, Botox®, waxing/tinting; all products are medical grade.
- Buck-I-D accepted! Check out www.monarch-health.com/osu for more info.

BUCK-I-D
Accepted

Deborah L. Cole-Sedivy DO, FAAP Joyce Kerr Casey, CNP
(614) 545-2002 3260 W. Henderson Road, Suite 100, Columbus OH 43220

*Must present valid OSU student ID and this ad at time of service. One coupon per student. Can not be combined with any other offers or discounts. Offer expires 3/31/04.

Are you interested in:

- Plant life and the environment?
- Feeding the world with safe, abundant, and healthy food?
- Linking your studies in biology with solving real-world problems?
- Greenhouse plants, ornamental plants, food crops, and tree health

OSU has an undergraduate major that may be right for you in

PLANT HEALTH MANAGEMENT

Gain a broad background in the basic and applied life sciences.

Discover the many types of microorganisms and environmental stresses that affect plant health. Learn how to apply your knowledge in plant and microbiological sciences to: diagnosing plant health problems, preventing and controlling diseases, and reducing environmental contamination.

- ✓ Scholarships up to \$2500 per year for four years are available now
- ✓ Specialize and start your own business
- ✓ Certification through the American Phytopathological Association
- ✓ Potential careers include: Landscape Specialist, Greenhouse Technologist, Plant Diagnostician and more

INTERESTED?

Contact: Dr. Mike Boehm (292-6807) boehm.1@osu.edu,
Dr. Chuck Curtis (292-4854) curtis.6@osu.edu,
Dept. of Plant Pathology, 201 Kottman (office 292-1375)



THE ART OF KISSING

WEDNESDAY, FEBRUARY 11, 8:00 PM

OHIO UNION CONFERENCE THEATRE

Want to perfect your pucker? Well the Art of Kissing is coming just in time for Valentine's Day. Learn about kissing cultures, customs and fads; and even witness live demonstrations! This is one event you cannot miss!

Best-selling author

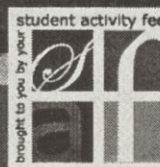
Michael Christian will delight you with:

- ♥ Making yourself more kissable
- ♥ How to get over First kiss jitters
- ♥ The newest fads in french kissing
- ♥ Bizarre kissing customs from around the world
- ♥ Instructions for today's trendiest kiss
- ♥ Where men and women prefer to be kissed most
- ♥ And much more!

FREE!

www.OUAB.net

Sign language interpreting services will be provided upon request. Please contact the Offices for Disability Services at 292-3307 to request services.



Peruvian president a letdown

Popularity rating continues to plummet for struggling Toledo

By Drew Benson
Associated Press



SILVIA IZQUIERDO/AP

Peruvian President Alejandro Toledo tries to put on a traditional hat in Junin, Peru, on Friday.

LIMA, Peru — From her dirt-floor corner shop in the grim shantytown of Pachacutec, Isabel Guzman gazes out at row upon row of shacks sprawling down toward the distant desert coastline.

What the 25-year-old mother doesn't see is any salvation coming from embattled President Alejandro Toledo.

"I thought that since he grew up poor he would be different, but things are just getting worse," Guzman says of Peru's first elected president of Indian descent. "Maybe someone else could do better."

She's not alone. Toledo's approval rating in opinion polls has plunged to 7 percent, a new low for his struggling presidency. Some politicians and commentators are urging him to cut short his five-year term and hold new elections.

Although a poor nation, Peru is economically stable and far from the political crisis it faced three years ago, when a corruption scan-

dal toppled President Alberto Fujimori's authoritarian government.

But gains from 29 straight months of economic growth under Toledo's pro-business policies have not trickled down to most Peruvians — especially the poorest, who give Toledo the lowest marks in surveys.

Toledo, 57, took office in July 2001, heralded as a champion of democracy in Peru after 10 years under Fujimori.

At the time, Toledo's popularity rating stood near 60 percent. Support, however, quickly faded as Peruvians grumbled he wasn't delivering on his campaign promise to quickly produce jobs in a country where nearly 10 percent of people are out of work and 65 percent have jobs that aren't full-time or lack benefits.

Missteps only compounded the discontent.

Many people viewed Toledo as

insensitive to the plight of the poor when he used government funds to pay for weekends at a fancy beach resort in northern Peru and society buzzed over his fondness for \$150 bottles of Johnny Walker Blue Label Scotch whisky.

The president also spent months resisting public demands before cutting his monthly salary from \$18,000 to \$8,400, while police and teachers earn less than \$300. He also fought acknowledging that he had fathered a daughter, now a teenager, out of wedlock.

Toledo's popularity has roller-coasted since, remaining below 20 percent most of his term.

He last peaked in November. But another downward run set in with a string of scandals leading to the resignations of four government ministers, including his popular Cabinet chief, Beatriz Merino.

Insurer, developer argue over Trade Center disaster policy

By Amy Westfeldt
Associated Press

NEW YORK — A lawyer for the World Trade Center's leading insurer argued yesterday that the destruction of the twin towers was one event under the terms of policies negotiated just weeks earlier, not two.

"We are going to prove the case out of the mouths of the witnesses of the other side," said Barry Ostrager, attorney for Swiss Reinsurance Co., which

Ostrager said in his opening statement in Manhattan federal court that leaseholder Larry Silverstein's risk manager, Robert Strachan, negotiated policies in July 2001 that used a broker's form called the Wilprop form, under which the destruction of the trade center was a single event.

Swiss Re and 12 other insurers are at odds with Silverstein over the amount of money the trade center's developers are owed, a figure that could affect the rebuilding schedule at ground zero.

Silverstein and the site's owner, the Port Authority of New York and New Jersey, have argued that he should receive \$7 billion, or twice the \$3.5 billion insurance policy on the center, because the two planes that flew into the towers 16 minutes apart on Sept. 11, 2001, represent two separate events.

The trial will determine how much Silverstein is entitled to receive in property insurance.

The 13 insurance companies that provided the bulk of the policy contend they issued the policy using the Wilprop form.

Silverstein, who holds a 99-year lease on the property, and

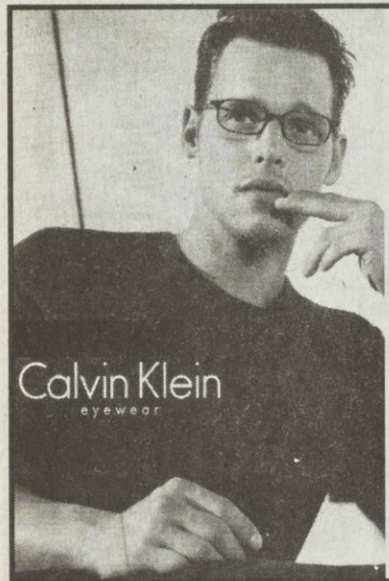
downtown development officials have been counting on the larger figure to build the 1,776-foot Freedom Tower, other skyscrapers and cultural buildings on the site within the next decade.

Development officials say failure to collect \$7 billion could mean years of construction delays at the site of the former World Trade Center.

The trial will focus on whether the insurance companies issued their coverage on the broker's form that would define Sept. 11 as one event or two.

If the jury decides that the form used doesn't define the towers' destruction as one event or two, a second jury would be convened to decide whether one or two attacks brought down the trade center.

Jurors would then determine how much each insurer would have to pay.



Campus
EYE STYLES

"Fashion For Your Eyes"



Most vision insurances accepted including student vision.

you can now schedule an eye exam online at
www.eye-styles.com
32 E. 15th Avenue
291- EYES

Eye exams by licensed OD's: Doctor David Gill & Associates

2nd Pair Deal

Purchase one pair of glasses (frames & lenses) at regular price or use your insurance on them and receive 40% off your complete second pair cannot be combined with other discounts

Expires 6/30/04 EYE STYLES

\$50.00 OFF

Purchase of eyeglasses (frames & lenses) cannot be combined with other discounts

Expires 6/30/04 EYE STYLES

FLOWERS DIE CANDY HAS CALORIES SPA'S GET US EXCITED!



PUT A SMILE ON HER FACE THIS VALENTINE'S DAY. SPA BAR
GIFT CERTIFICATES ARE PERFECT! CHOOSE FROM ANY ONE
OF OUR 3 PACKAGES OR WE'LL HELP YOU DESIGN YOUR OWN!



A SHOT OF BEAUTY
Manicure & Pedicure \$32

THE PARTY GIRL
Manicure, Pedicure, & Spray Tan \$50

HAPPY HOUR
Manicure, Pedicure, & Spray Tan, & Foot Massage \$60



8 15TH AVENUE COLUMBUS, OHIO 43215 294-4820 WE'RE RIGHT NEXT TO KINKOS.
No appointments needed, just walk in!

Study for LASIK patients

- Purpose: To learn more about how eye tests work in LASIK patients
- Earn \$30.00 for completing three eye exams
- Eligibility criteria:
 - ▶ You must have already had LASIK surgery for nearsightedness
 - ▶ You must be 21 years of age or older

For more information, contact:

Dr. Melissa Bailey
The Ohio State University
College of Optometry
338 West Tenth Avenue (614) 247-6870
Columbus, OH 43210 bailey.352@osu.edu

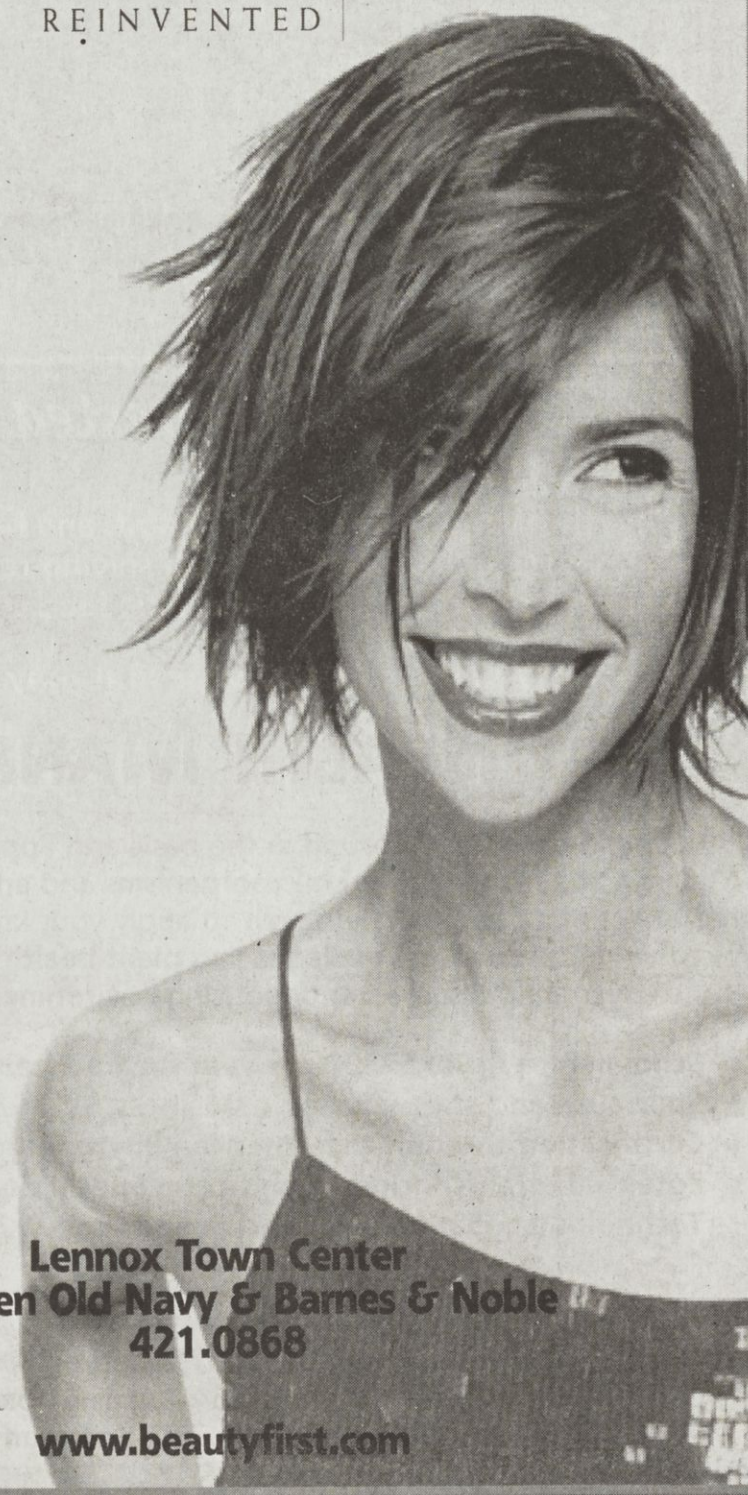


HAIR • SKIN • NAILS • COSMETICS • BATH & BODY • ACCESSORIES

beautyfirstSM
Beauty Store Salon

beauty
REINVENTED

tigi
american crew
paul mitchell
joico
rusk
artec
matrix
kenra
sebastian
nexus
burt's bees
nioxin
graham webb
redken
kms
and more!



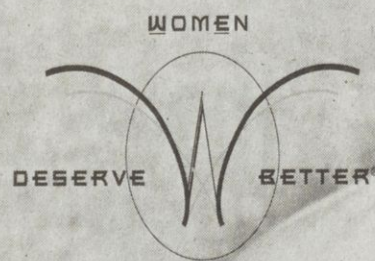
Lennox Town Center
between Old Navy & Barnes & Noble
421.0868

now accepting
BUCK-I-D

www.beautyfirst.com

Abortion is a reflection
that we have not met
the needs of women.

Women deserve better
than abortion.



www.WomenDeserveBetter.com

Women Deserve Better is a registered trademark of Feminists for Life of America

THE LANTERN ARTS

TUESDAY FEBRUARY 10, 2004



RYAN
SILVERMAN

V-Day for the hopeless

Here we are again — the week before Valentine's day. The final week in that dark chasm of time that spans from the end of November 'til the second week of February which leaves those of us lacking someone special to spend the holidays with feeling guilty. I'm a little bummed this year, because for a brief moment, it looked like I would escape this fate but alas, it was not meant to be.

However, rather than get bogged down by this fact, I thought I would instead try to do some good and offer guidance for anyone else stuck in a similar atmosphere. Here I deliver my "Single And Slightly Bitter Yet Hopeless Romantic Survival Guide" for Valentine's Day, also known as "Maybe the Romans Had the Right Idea."

The first thing I do is remind myself of something I often forget. It's a harsh truth I prefer not to face, but I must to properly survive the week. This truth? I am not John Cusack. As much as I often wish I were, I'm not. It's ok though, but this is an important bit of information to keep in mind. I could probably make a good argument towards being Jeremy Piven, though, if prompted and properly sloshed, but that strays from the topic at hand.

The above revelation is necessary because as a movie geek, my first move whenever I'm feeling a little cynical is to pop in a couple DVDs featuring the romantic escapades of fictional people. In order to make this a healthy step, it is imperative that I first distance myself from the male lead, usually Cusack. These movies serve a need for escapism, not emulation. You don't try to rob a casino after watching "Ocean's Eleven," so why try to base your romantic life on "Say Anything?"

If you're unable to distance and must identify with the protagonist of the movie, I recommend "High Fidelity." You may find yourself having to stop watching after Rob and Laura get back together, but at least you'll have over an hour of single and bitter catharsis. "True Romance" is also decent because people get shot.

It is extremely important this week that you absolutely do not watch "When Harry Met Sally." Often, people can distance themselves from this movie, but when added to the depressed state that Valentine's Day puts the single person in, there's too much potential for danger. If you are alone and watching that movie this week, you may develop a theory that your platonic friend whom you've had a secret crush on for years is also in love with you. They aren't. Sorry. If they were they would have said something by now. I know what you're thinking: "No way, he or she has no idea." Yes he or she does.

If you're venturing out to the multiplex — which is not recommended this weekend, as blasphemous as it is for me to say — avoid "50 First Dates," which will undoubtedly be filled with cute couples, and that is a bad cocktail. Instead see "Miracle," "Big Fish," or "Return of the King," again.

However, watching movies isn't the only thing to do. I recommend listening to early hits by Elvis Costello, or "When I Was Cruel." "Alison" is a must. Beck's "Sea Change" album might just drive someone to suicide this week so I'd avoid it. Just about anything by Dashboard Confessional should be golden though. "Little Black Backpack" by Stroke 9 is a fun little 90's nostalgia kick too, mostly because someone gets their head bashed in (see "True Romance" above).

There is always the option of getting completely blitzed until V-Day has come and gone, only to wake up without a memory or a pair of pants. Though, if you do that now, you'll have to rethink your St. Patty's day. Me? I'll be fine with a handful of movies, and maybe a couple shots in recognition of this cursed greeting-card holiday. Unless I manage to find myself a date this week. Speaking of which, does anyone know where I can get some decently priced roses and candy?

Ryan Silverman is a senior in English and can be reached for comment at silverman.61@osu.edu.

Creativity leads the way

Graduate student exhibition defies genre, medium

By Taya Flores
Lantern arts writer

Themes of dyslexia, cultural emptiness and artistic exploration cover the walls of the Hopkins Hall gallery, showcasing the talent at this year's Department of Art Graduate Student Group Exhibition. The show previewed yesterday with an opening reception for the various student work displayed.

"It's a good time to hear about the work, hear peoples' opinions and to get real insight," said Prudence Gill, gallery curator at Hopkins Hall.

The exhibit features work by students in art and technology, ceramics, glass, photography, printmaking, sculpture, painting and drawing.

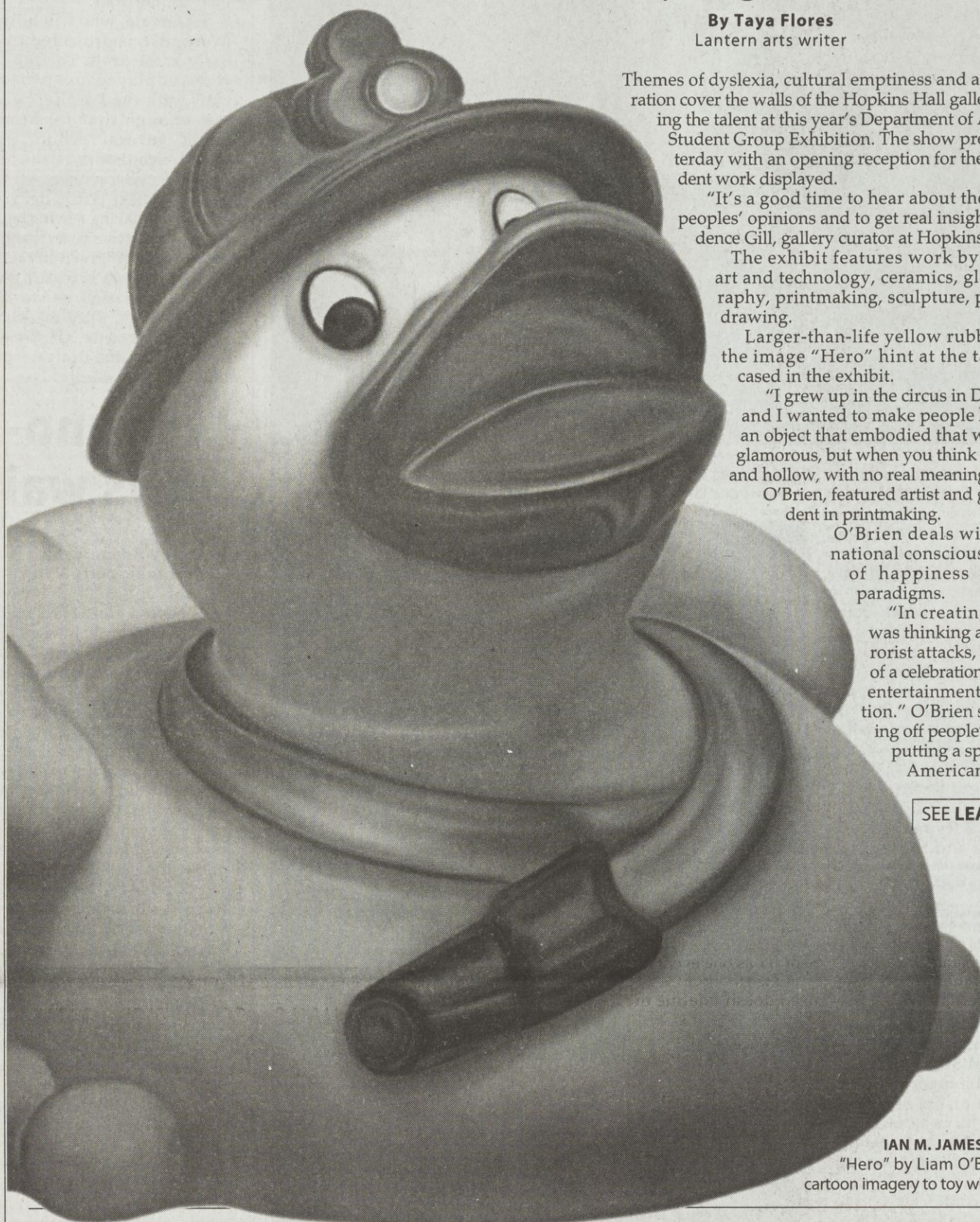
Larger-than-life yellow rubber ducks in the image "Hero" hint at the talent showcased in the exhibit.

"I grew up in the circus in Disney World and I wanted to make people happy using an object that embodied that world; glitzy, glamorous, but when you think about it, fake and hollow, with no real meaning," said Liam O'Brien, featured artist and graduate student in printmaking.

O'Brien deals with issues of national consciousness, ideals of happiness and world paradigms.

"In creating the piece I was thinking about the terrorist attacks, but it's more of a celebration of American entertainment as a distraction," O'Brien said. "Profiting off people's misery and putting a spin on it is the American way. We're

SEE LEADS PAGE 13



IAN M. JAMES/THE LANTERN
"Hero" by Liam O'Brien uses cartoon imagery to toy with social issues.

DVD REVIEW

Porn king balances family, career

By Arlyne Farris
Lantern arts writer

"Family Business," an original late-night series on Showtime, highlights a typical guy who juggles an anything-but-ordinary job, single parenthood and a dismal love life.

Adam Glasser, also known as Seymore Butts, is one of the most common names in the adult entertainment industry. In 12 years, he has produced, directed and acted in more than 70 popular adult films.

One might ask, why is he worthy of a reality TV series? The question is certainly not answered in the show's pilot episode from the just-released DVD of the first season.

The series is filmed in a documentary style, and, excluding his blind Internet dates, little else is intriguing. The show is noticeably dominated by graphic sex scenes, which are of course Butts'

creations, making this show clearly not for viewers who are easily appalled.

As cameras trail this middle-aged, single dad directing hardcore scenes and seeking a relationship, it is unclear why his life is transposed into a reality series. The premise is simply not enough to make the show entertaining.

The contrast between Butts' alter ego as a parent and adult film producer are annoying and overdone. As a single father, it is expected that Butts would spend time with his son, but the show purposely highlights his interaction with his son. He wakes Brady up, packs his lunch and takes him to school. Congratulations Butts, you're a porn producer and a dad. Everyone has

SEE KING PAGE 13



COURTESY OF SHOWTIME ENTERTAINMENT
"Family Business" tells the tale of a family-operated porn business.

Romance novelist on tour

By Gregory L. Jones
Lantern arts writer

Romance and wit will abound as an Ohio State Master's in Fine Arts recipient prepares for a national book-signing tour beginning at 7:30 p.m. today in the Columbus Metropolitan Library's main branch.

New York Times best-selling author Jennifer Crusie discovered the power of romance novels as part of her research while working on her dissertation at OSU.

Crusie said she was working on her fourth book for Harlequin when she was

approached about joining the Master's in Fine Arts program at OSU.

"Lee K. Abbott from the English department stopped me in the hall and said I heard you're published," Crusie said. "I said yes, but it's in romance, thinking he'd spit on me, and he said 'I don't care what it is, if you've been published you should be in the MFA program.'"

Crusie said she owes much of her success to the masters in fine arts program and Abbott.

Abbott, a critically acclaimed author and OSU English professor, said

although he does not personally have stigmatic views regarding the romance genre, many academics look down on it.

"Good writing is good writing," said Abbott.

Abbott said Crusie was an ideal student whose writing is gritty and full of humor.

"She's a genius between margins," Abbott said. "She's got a sense of humor both on and off the page."

Crusie said her work is marketed as women's fiction due to the stigma attached to



COURTESY OF ST. MARTIN'S PRESS

ARTS CALENDAR

TUESDAY 2/10

**The Every Others/
Manda and the
Marbles**
Little Brother's
1100 N. High
8 p.m.
\$5

WEDNESDAY 2/11



**Urge Overkill/
The Last Vegas**
Skully's
1151 N. High
9 p.m.
\$15

**Scott McCloud: the
Future of Comics**
Wexner Film/Video Theater
7 p.m.
free

THURSDAY 2/12

**Kaurismaki Film series
feat. "The Match
Factory Girl"/
"Calamari Union"**
Wexner Film/Video Theater
7 p.m.
\$4

OSU Wind Symphony
Weigel Auditorium
8 p.m.
free

FRIDAY 2/13



**The Black Keys/
El Jesus Magico**
Little Brother's
8 p.m.
\$10

**Templeton/Shesus/
Big Meat**
Little Brother's
8 p.m.
\$5



**Sadie Benning
retrospective: program 1**
Wexner Film/Video Theater
7 p.m.
\$4

SATURDAY 2/14

**Suicide Girls Burlesque
Tour feat. Denovo/
Bloom**
Little Brother's
8 p.m.
\$8



The Honeys/ Red Dahlia
Skully's
9 p.m.
\$5

OSU Jazz Lab Ensemble
Weigel Auditorium
8 p.m.
free

SUNDAY 2/15

"One from the Heart"
Wexner Film/Video Theater
7 & 9 p.m.
\$4

Wrestling win ties record

By Jeff Svoboda
Lantern sports writer

Tommy Rowlands enrolled at Ohio State as a two-time state champion at Bishop Ready High School in Hilliard, Ohio. He will leave OSU in the record books.

The top-ranked Buckeye heavyweight tied the all-time OSU record for career wins when he achieved a technical fall over Northwestern's Michael Little in OSU's 40-3 win Sunday. His 151st career win tied him with Ed Potokar, who wrestled from 1980-1983. Potokar was in attendance Sunday, and joined the crowd of 850 in giving Rowlands a standing ovation after his win.

"There couldn't be a better guy to represent Ohio State and be at the top of the list," Potokar said. "There have been some great wrestlers at Ohio State, but Tommy has the character that you really want to see represent Ohio State, as well as being a true champion."

Rowlands, now 31-1 on the year, was appreciative for what Potokar had accomplished before him.

"It's an honor. I guess when I think about the record, the first thing I think about is how much winning Ed Potokar did," Rowlands said. "151 wins is no joke, so I'm happy to get it."

No. 19 OSU (7-7 overall, 3-2 Big Ten) had its best match of the season, taking control early. Rowlands' win gave the Buckeyes a 5-0 lead and was followed by an injury default win for 125-pound freshman Jermaine Jones. Senior Jesse Leng (133) notched his second pin of the year at the 3:39 mark of his match. Freshman Theo Dotson (141) and senior No. 12 Jeff Ratliff (149) followed with wins to give OSU a 24-0 cushion. Leng and Dotson struggled before the wins.

"It was nice to see (Leng) and (Dotson) get a little more confidence with the win," coach Russ Hellickson said. "They're not bad kids, they've just been overwhelmed by the opposition."

After a loss by 157-pounder Ryan Rhodes, OSU finished the match with victories from No. 12 John Clark (165), sophomore Anthony Magistrelli (174), No. 10 Blake Kaplan (184), and No. 16 J. D. Bergman (197). Kaplan's 29th win of the year came when he pinned Wildcat freshman Joseph Gulotta just 27 seconds into the match.

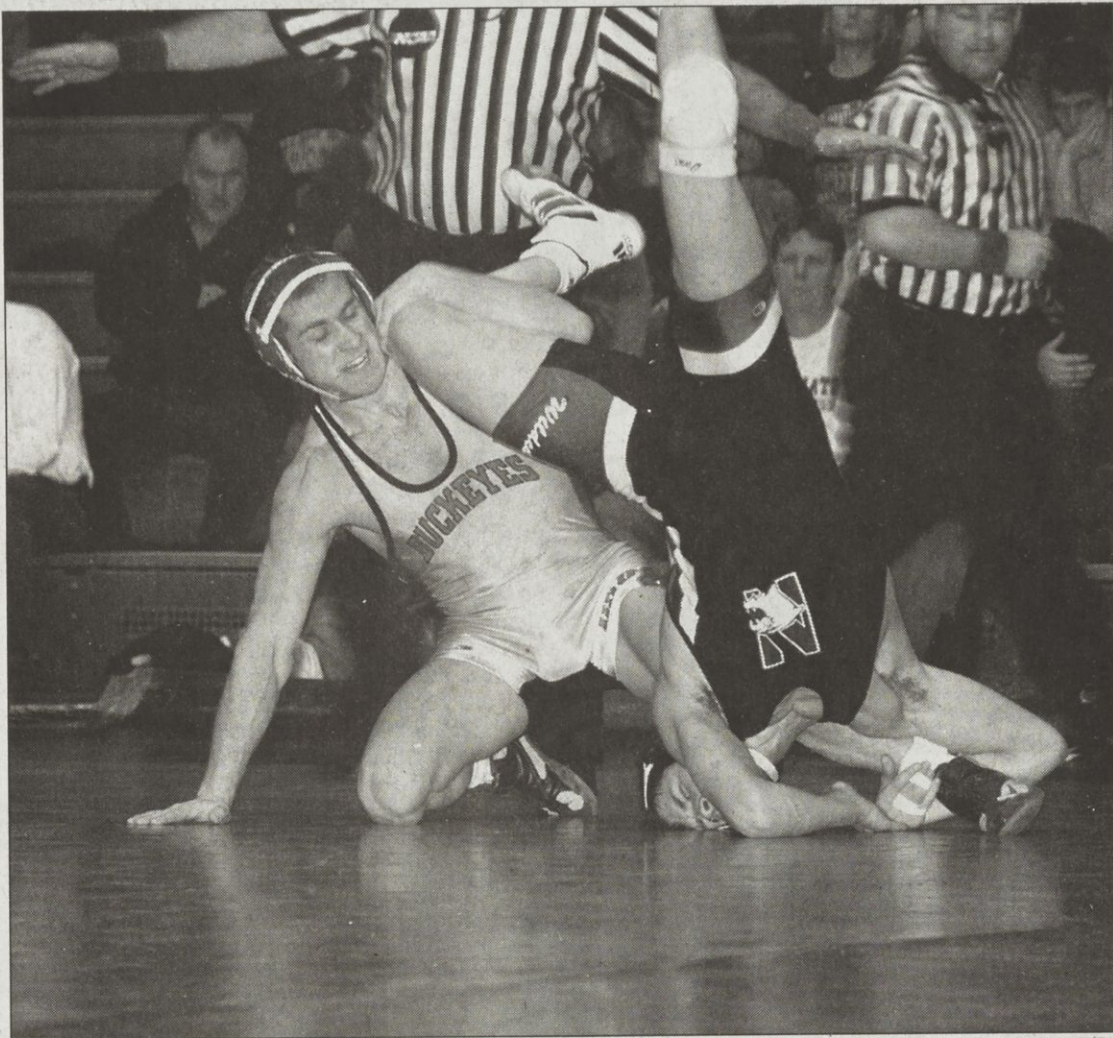
"He set a record today — he was the first guy to end his match before his (intro) song was over," Hellickson said.

Freshman Bergman notched his sixth consecutive win and 21st of the season.

"He's feeling fairly confident right now," Hellickson said. "I like what I see in him."

Hellickson says the win may be a signal OSU has gotten over a five-match losing streak that began last weekend against Purdue.

"We had good matches



PHOTOS BY IAN M. JAMES/THE LANTERN

OSU Sophomore Anthony Magistrelli positions opponent Nolan Welther for an early takedown during Saturday's Big Ten wrestling matchup between OSU and Northwestern.

where they had pretty good wrestlers, and that to me is an indication that we're pretty crisp," he said.

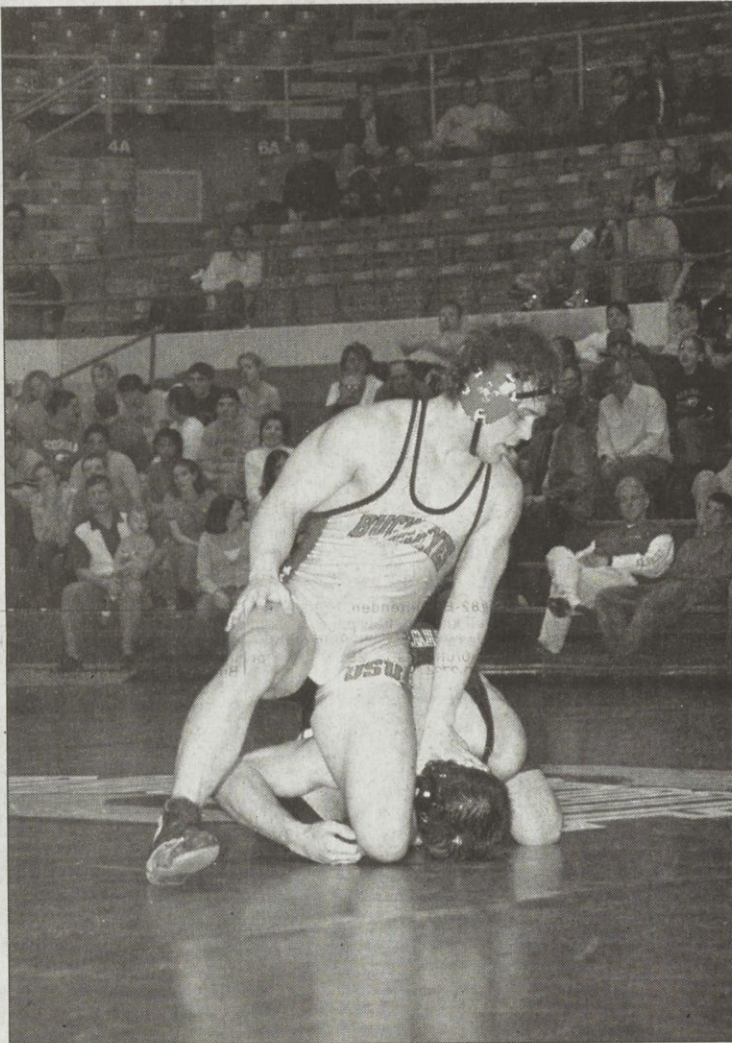
The Buckeyes started the weekend by losing to No. 2 Michigan 22-15 Friday night. OSU found themselves in a quick 19-0 hole by losing the first five matches, all to ranked Wolverine opponents. The only match OSU had a chance to win came at 149 pounds, where Ratliff took a 4-2 lead into the third period against No. 7 Ryan Churella before tiring and falling by a 5-4 count.

The most controversial match of the weekend came in the 165-pound battle between Clark and No. 4 Pat Owen. Clark appeared to have pinned Owen in the second period, but the referee ruled that Owen's arm had come out, enraging the 1,535 in attendance at St. John Arena. Clark won the match 8-5, the team lost out on crucial points that would have come with the pin. Clark was happy he avenged his loss to Owen last year.

"It is a big confidence booster after being in a slump," Clark said. "He was ranked fourth in the country. That's where I was last year, and it's kind of like welcome back."

The Buckeyes got wins from Kaplan, Bergman and Rowlands to end the meet, with Rowlands pinning No. 5 Greg Wagner at the 2:37 mark after scoring three early takedowns. It was Rowlands' third win against Wagner this season.

"It's good to beat someone



OSU's J.D. Bergman exerts control over Northwestern's Matt Delguyd during Saturday's 40-3 Buckeye victory over the Wildcats.

three times," Rowlands said. "Sometimes they get a little down on themselves."

Hellickson was impressed by Rowlands' two wins over the weekend.

"I haven't seen (Rowlands) in

his whole career look crisper than he's been looking in the past week," he said.

OSU will be back in action Friday night at Illinois. The match will be the 500th of Hellickson's coaching career.

Pitt star takes his talent to next level

By Charles Sheehan
Associated Press

PITTSBURGH — Larry Fitzgerald made the decision everyone expected: To enter the NFL draft.

The Heisman Trophy runner-up said he would forgo his collegiate career at Pittsburgh to turn professional yesterday. His announcement came four days after he was declared eligible for the draft.

Fitzgerald, who will turn 21 in August, is projected to go early in the draft. Though the receiver played just two seasons with the Panthers, that was enough time for him to break several school and NCAA records.

"The main reason people come to college is to better your chances of making a living, and I think that my two years that I've had here, I've given myself a good opportunity to make a good living ... for myself, and to support my family," Fitzgerald said.

He petitioned the NFL to allow him to enter the draft despite

recording only two seasons of play. Fitzgerald left the Academy of Holy Angels in Richfield, Minn., midway through his senior year in 2001 and transferred to Valley Forge (Pa.) Military Academy to boost his grades for college.

The NFL cleared the way for Fitzgerald to enter the April draft because he is three years removed from his senior year of high school.

"I'm very confident in my ability," he said. "I know there's going to be skeptics and there's going to be people out there criticizing this and criticizing that, but all-in-all I know I can play the game of football."

The league's decision on Fitzgerald came on the same day a federal judge ruled running back Maurice Clarett could turn pro despite playing only one season at Ohio State.

In that ruling Thursday, the judge said NFL rules regarding its draft violate federal antitrust laws. The ruling overturned the league's rule barring players from being eligible for the draft before they were out of high school for three years.

Lions no-show; OSU plays waiting game

By Adam Jardy
Lantern sports writer

The No. 5 Ohio State men's club ice hockey team went into the weekend poised and ready for an important series against visiting Penn State. A sweep would guarantee the Buckeyes a berth in the national tournament and a shot at the national title.

There was one problem. Penn State did not show. Citing bad weather, the school closed Friday morning, which canceled all weekend activities. However, the school reopened at 3 p.m. that day. PSU's Division I club hockey team took the ice for its weekend series, but the Division II team — scheduled to play at the OSU Ice Rink Friday and Saturday — did not.

"That's kinda shady — their Division I team plays but their Division II team doesn't," OSU junior goalie Regis Mullen said. "We just wanted to play one game."

Freshman defenseman Mike Little was upset by the cancellation.

"We were told this week that if we won both games against Penn State that we would qualify for nationals," Little said. "We've been looking forward to it all week."

To qualify for nationals, a team must be ranked in the top four in their division or host the tournament. This year's host, Maryland, is in the same division as the Buckeyes. This means OSU must be ranked in the top three within its conference to qualify.

"If (Penn State) had lost, they might not have made nationals," Little said.

The loss of the two games means a missed opportunity for the Buckeyes. Forfeit victories will not sway the balloting for the postseason. OSU is left anxiously waiting until tomorrow or Thursday — when the voting results will be released — to see what path the rest of its season lies on.

"I've been coaching for a long time, but talking to the players on Friday night was one of the hardest things I've ever had to do," coach Bob Heine said.

Penn State is not in the same conference as the Buckeyes, and the Nittany Lions are ranked high enough to qualify for nationals. With nothing to gain and everything to lose, the weekend series was not as crucial to PSU as it was to OSU.

"Under the circumstances it was a low class move. They didn't even call — they sent an e-mail," Heine said. "There was no reason they couldn't make the Saturday game at the very least."

The coach said, the weekend was important to the team for many reasons. Possible recruits for next season were scheduled to attend, as well as the Buckeye Dance Force. The players had been working for this weekend all season. It was a chance for the team to make a statement to the community.

"This weekend was all about the 26 guys on our roster. That's who I feel the worst for," Heine said. "There is no reason at all that (Penn State) doesn't show up."

The Buckeyes close their home schedule this weekend at the OSU Ice Rink — where they have won 21 straight games — against the visiting Miami Redhawks.

How can you find out what's going on at Ohio State?

SUBSCRIBE

Subscribe today to the *Lantern*, America's third largest college newspaper. You'll get the inside story on sports, campus events, decisions that affect costs and tuition, area housing and campus crime. In fact, the *Lantern* is the primary source of information that affects the daily lives of the students you care about. Just take a moment and send a check or money order with the coupon below, or call 614-292-2031 ext. 42165 and charge your subscription to Visa or Master Card.

RATES	1st class mail	3rd class Business Bulk *
SUMMER	\$22	\$8
FALL	\$64	\$18
WINTER	\$64	\$18
SPRING	\$64	\$18
YEARLY	\$212	\$62

*allow 3-7 days for delivery

THE LANTERN
242 W. 18th Ave. Room 211
Columbus, OH 43210-1107

THE LANTERN

THE STUDENT VOICE OF OHIO STATE UNIVERSITY

Name _____

Address _____

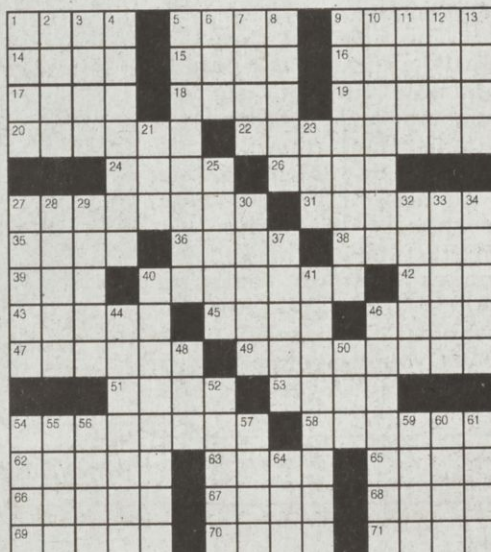
City _____ State _____

Zip Code _____ (zip +4 required for delivery)

Make checks payable to OSU Lantern.

Crossword

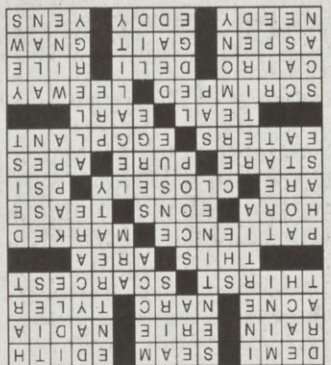
- ACROSS
- 1 Actress Moore
 - 5 Tailor's line
 - 9 Mrs. Archie Bunker
 - 14 Precipitation
 - 15 Cleveland's lake
 - 16 Gymnast Comaneci
 - 17 Complexion woe
 - 18 DEA operative
 - 19 President before Polk
 - 20 Strong desire
 - 22 Hardest to find
 - 24 The nearer one
 - 26 Region
 - 27 Forbearance
 - 31 Conspicuous
 - 35 Israeli folk dance
 - 36 Geological time divisions
 - 38 Make fun of
 - 39 Exist
 - 40 Intensively
 - 42 Air pressure meas.
 - 43 Extend a look
 - 45 Unadulterated
 - 46 Mimics
 - 47 Dinners
 - 49 Aubergine
 - 51 Shade of blue
 - 53 Chief Justice Warren
 - 54 Economized severely
 - 58 Wiggle room
 - 62 Egypt's capital
 - 63 Cold-cut palace
 - 65 Vex
 - 66 Colorado ski resort
 - 67 Trot or canter
 - 68 Do beaver work
 - 69 Down-and-out
 - 70 Small whirlpool
 - 71 Cravings
- DOWN
- 1 Mild expletive
 - 2 Apiece
 - 3 Skirt type
 - 4 Resistance to change
 - 5 One standing guard
 - 6 Notable period
 - 7 Broadcasts
 - 8 Holy city of Islam
 - 9 Plea
 - 10 Preschool school
 - 11 Not in operation
 - 12 Even scores
 - 13 Male red deer
 - 21 That girl
 - 23 Provide with weapons
 - 25 Ice-cream portion
 - 27 Distinct stage
 - 28 Main artery
 - 29 Pick up the tab
 - 30 Follow in order
 - 32 Greek letter
 - 33 Ruhr industrial city
 - 34 Believer in God
 - 37 Suit material
 - 40 Formal ritual
 - 41 Lawfulness
 - 44 No longer working
 - 46 Physical hypersensitivity
 - 48 Gullible person
 - 50 Judge or school lead-in
 - 52 Rock shelf
 - 54 Read hastily
 - 55 Example
 - 56 Fully developed
 - 57 Lifeless
 - 59 Burgundy, e.g.
 - 60 Astronaut Shepard
 - 61 Poisonous evergreens
 - 64 Cover



© 2004 Tribune Media Services, Inc. All rights reserved.

02/10/04

Solutions



TERMS AND CONDITIONS

The *Lantern* will not publish illegal advertising or the advertising of illegal products or services. The *Lantern* reserves the right to reject advertising that denigrates individuals, groups or organizations based on race, gender, nationality, ethnicity, religion, mental or physical capacity, veteran's status, age or sexual orientation. The *Lantern* Business Manager will refer questionable advertising to the Publications Committee of the School of Journalism and Communication. The committee will recommend a decision on whether to publish the advertising to the Director of the school.

1. Complete name, address and telephone number for each advertiser is required.
2. Copy must be furnished by noon three days before publication, except for special publications whose deadlines will be announced.
3. An advertisement is required to occupy at least as many inches in height as columns in width. Any advertisement exceeding 18 inches in height will be considered a "full column" (21 inches) advertisement and charged accordingly.
4. Make-goods and adjustments will be considered for those advertisements only where errors occur in (a) business or group name, address, or phone number, (b) item price or (c) date, time or place of event. The error must be solely the fault of the *Lantern*. Adjustments will not exceed the cost of the advertisement and will be based on the portion of the advertisement nullified by the error. Minor spelling errors will not qualify for adjustment. Complaints must be registered with the Business Manager within 45 days of publication to qualify; otherwise the advertiser accepts full responsibility.
5. Guaranteed position is sold at the Business Manager's discretion.
6. A composition charge may apply to any changes, revisions or cancellations made after deadline.
7. No proof will be furnished for any advertisement received after deadline or for an ad smaller than seven column inches.
8. If the *Lantern* finds it necessary to stop contracted advertising because of nonpayment, the advertising agreement will be violated and the advertiser subject to a "re-bill" fee.
9. The *Lantern* reserves the right to require prepayment for advertising, or to reject advertising, if the advertiser is delinquent in payment, or if the advertiser's credit is impaired. Advertisers must prepay all advertising until a satisfactory credit rating with the *Lantern* is established. A certified check or money order is required for out-of-town advertisers.
10. Contract advertisers will furnish the *Lantern* with a "rate-holder" ad meeting contract minimums for use in any contract period for which the advertiser does not provide an ad.
11. A tearsheet will be furnished for all display advertising run in the *Lantern*. Additional tearsheets are available (limit 15) provided the advertiser requests them from the *Lantern* office prior to publication.
12. The advertiser agrees to indemnify and hold harmless the Ohio State University, its Board of Trustees and its officers, agents and employees from and against any and all loss, cost and expense, including reasonable attorney fees, resulting from the publication by the *Lantern* of the advertiser's advertisement.
13. Advertisers in the *Lantern* agree that they will not represent themselves in any way as being endorsed by the Ohio State University.
14. A mail-order advertiser is required to submit a sample "proof-of-product" prior to publication.
15. Advertisers must request the return of their original ad materials; the *Lantern* will dispose of such materials 60 days after their first publication.

Amended Winter, 2002

THE LANTERN

THE STUDENT VOICE OF OHIO STATE UNIVERSITY

CLASSIFIEDS

LANTERN CLASSIFIED ADVERTISING INDEX

<ul style="list-style-type: none"> FURNISHED 1 BEDROOM FURNISHED 2 BEDROOM FURNISHED 3 BEDROOM FURNISHED 4 BEDROOM FURNISHED 5+ BEDROOM FURNISHED EFFICIENCY/STUDIO UNFURNISHED 1 BEDROOM UNFURNISHED 2 BEDROOM UNFURNISHED 3 BEDROOM UNFURNISHED 4 BEDROOM UNFURNISHED 5+ BEDROOM UNFURNISHED EFFICIENCY/STUDIO 	<ul style="list-style-type: none"> ROOMS ROOMMATE WANTED/FEMALE ROOMMATE WANTED/MALE ROOMMATE WANTED SUBLET HELP WANTED/GENERAL HELP WANTED/CHILD CARE HELP WANTED/CLERICAL HELP WANTED/MEDICAL-DENTAL HELP WANTED/RESTAURANT/FOOD SERVICE HELP WANTED/OSU HELP WANTED/SALES/MARKETING HELP WANTED/VOLUNTEER HELP WANTED/LANDSCAPE/LAWN CARE 	<ul style="list-style-type: none"> HELP WANTED/INTERNSHIPS HELP WANTED/TUTORS FOR SALE/AUTOS FOR SALE/BICYCLES FOR SALE/COMPUTERS/ELECTRONICS FOR SALE/FURNITURE/APPLIANCES FOR SALE/MISCELLANEOUS FOR SALE/MOTORCYCLES FOR SALE/PETS FOR SALE/REAL ESTATE TICKETS WANT TO BUY TICKETS WANT TO SELL TRAVEL/VACATION LOST 	<ul style="list-style-type: none"> FOUND SERVICES/GENERAL SERVICES/AUTOMOTIVE SERVICES/LEGAL SERVICES/RESUMES SERVICES/TYPING MISC./BUSINESS OPPORTUNITIES MISC./FOR RENT MISC./GENERAL MISC./WANTED ANNOUNCEMENT/NOTICE PERSONALS
--	--	--	--



CLASSIFIED ADVERTISING POLICY

The Lantern will not publish illegal advertising or the advertising of illegal products or services. The Lantern reserves the right to reject advertising that denigrates individuals, groups or organizations based on race, gender, nationality, ethnicity, religion, mental or physical capacity, veteran's status, age or sexual orientation. The Lantern Business Manager will refer questionable advertising to the Publications Committee of the School of Journalism and Communication. The committee will recommend a decision on whether to publish the advertising to the Director of the school.

IMPORTANT - CHANGES / EXTENSIONS

We must be notified before 10:00A.M. the last day of publication, for any extensions, cancellations or changes to be made in an ad for the next day. Changes of one to three words will be permitted in an existing ad. A \$3.00 fee will be assessed for each change. (The word count must remain the same).

REPORT ERRORS AT ONCE

Please notify us by 10:00A.M. the FIRST DAY your ad appears if there is an error. The Ohio State Lantern will not be responsible for typographical errors except to cancel charge for such portion of the advertisement as may have been rendered valueless by such typographical error. If you notify by 10:00A.M. the first day of an error we will repeat the ad 1 insertion without charge.

SORRY, IF WE ARE NOT NOTIFIED BY 10:00A.M. THE FIRST DAY OF PUBLICATION, THE RESPONSIBILITY IS YOURS.

Prepayment is Required for All Ads (unless credit has been established)

DEADLINE FOR PLACEMENT OF NEW ADS: NOON, 2 Working Days (Mon-Fri) prior to publication
Business Office Open: Mon - Fri, 8:00am - 5:00pm
Phone: 292-2031 ext. 42161 / FAX: 614-292-3722 — 242 W. 18th Ave. — Rm 211 Journalism Bldg.

CLASSIFIED LINE AD - REGULAR TYPE
Minimum Charge - \$8.25 plus 25¢ per day for Lantern Web Site
Up to 12 words, appears 5 consecutive insertions.

CLASSIFIED DISPLAY (Box) RATE:
\$11.30 - Per Column inch, Per Day

VISA

MasterCard

DISCOVER

PERSONAL
CHECKS
ACCEPTED

CALL 292-2031

To Place Your Ad
Or Do It ONLINE @ WWW.THELANTERN.COM

FURNISHED RENTALS

#1*1*BEAUTIFUL
to 6+ Bedroom Apts.
houses, townhouses,
& doubles available
for Fall 2003.
We have north, central
& south campus loca-
tions available starting
as low as \$250-\$475
per person, some with
party decks, jacuzzi
tubs, fireplaces &
vaulted ceilings.
Call for your showing
today!
294-7067

19TH @ Summit. Available now.
Extra nice, 1 & 2 bedroom, fur-
nished, utilities paid, no pets.
\$395 & up. Call 837-8778.

FURNISHED EFFICIENCY/STUDIO

#1 AVAILABLE NOW. GRAD
House. FREE high speed Inter-
net - Rent move-in specials. 1456
Neil Avenue. Furnished, utilities
paid, quiet, non-smoking, central
air, laundry, parking. Low \$400s.
several to choose from. A quiet
home for the serious student.
http://members.ee.net/teking/
Owner-Broker 421-7117

#1 GRAD House. Medical
school area. 1456 Neil Ave.
Penthouse appeal. Skylights, uti-
lities paid, quiet, non-smoking,
central air, laundry, parking. Low
\$400s, several to choose from. Free
high speed internet. July-Aug-
Sept Move-in. Check out the
web site and drive by the loca-
tion. http://members.ee.net/teking/
Owner-Broker 421-7117

106 E. 13th Ave. Ready now!
Large studio unit. Secure build-
ing, laundry facility, heat & water
paid. A/C, rent includes High
Speed DSL. \$395/month. Call
Kylie 614-313-6633.

THE OHIO STATER

2060 N. High St.
Secure Building
294-5381
www.ohio-stater.com
Newly Decorated
Efficiencies
Great Location!
Rent Now.....Also for Fall
"All utilities & cable paid"
"High speed Internet Avail-
able"
"Parking garage"
"Microwave/Full size frig."
"Full size beds"
"Coin-op laundry"
"New workout room"
Short Term Lease Available.
Move in now. Stay thru Aug.
Receive \$100 Target Gift Cert.
(to those qualifying)

222 W. Lane Ave. Offering indi-
vidual lease contracts & room-
mate matching in 2, 3, or 6 bed-
room luxury apartments. Across
from OSU Business College. All
utilities & housekeeping in-
cluded. Call 294-5551.

AVAILABLE NOW & fall. Extensi-
vely remodeled studio suites in
prime locations. Air-conditioning,
on-site laundry facilities, off-
street parking. Furniture avail-
able. \$395-\$445/month, short
term lease available. All utilities
paid! 291-5001.

EFFICIENCY APARTMENT
\$375.00 A stones throw from
O.S.U. main campus. Heat in-
cluded, newly remodeled, lots of
natural light. Call now 668-6110

FURNISHED 1 BEDROOM

#1 GRAD House. Medical school
area. 1456 Neil Ave. Lots of win-
dows. Utilities paid, quiet, non-
smoking, clean, freshly painted,
central air, laundry, parking. Mid
\$400s, several to choose from.
Free high speed internet. Aug-
Sept Move-in. Check out the
web site and drive by the loca-
tion. http://members.ee.net/teking/
Owner-Broker 421-7117

0 UTILITIES. 1-2 bedrooms, flexi-
ble lease periods, super conven-
ient location, 38 E. 17th Ave.,
laundry, off-street parking,
\$300-\$450/month. 263-1193 or
296-6304.

222 W. Lane Ave. Offering indi-
vidual lease contracts & room-
mate matching in 2, 3, or 6 bed-
room luxury apartments. Across
from OSU Business College. All
utilities & housekeeping in-
cluded. Call 294-5551.

AVAILABLE NOW & fall. Extensi-
vely remodeled studio suites in
prime locations. Air-conditioning,
on-site laundry facilities, off-
street parking. Furniture avail-
able. \$395-\$445/month, short
term lease available. All utilities
paid! 291-5001.

**NEIL - N of Lane @ West Tomp-
kins.** Deluxe furnished 1 large
14 x 18 bedroom. A/C, carpet,
stove, refrigerator, microwave
and large computer desk, clean,
quiet, reasonable. Ideal for Grad
or serious students. All utilities
\$480/month. 614-832-6989.

SOUTH CAMPUS upstairs cozy
1 bedroom w/office, modest uti-
lity bills, quiet street. \$400/mo.
No pets. Off-street parking, laun-
dry. 523-4075

FURNISHED 2 BEDROOM

0 UTILITIES. 1-2 bedrooms, flexi-
ble lease periods, super conven-
ient location, 38 E. 17th Ave.,
laundry, off-street parking,
\$300-\$450 per month. 263-1193
or 296-6304.

1 AVAILABLE NOW. 65 W. 8th
Ave. Very nice large 2 BR. A/C,
clean, off-street parking, own
W/D, dishwasher, fridge. Alex
614-205-4608.

FURNISHED 2 BEDROOM

1890 N. 4th Street. Modern 2
bedroom apts furnished. \$750
month. Heat included, water
paid, A/C, laundry facility, secu-
re building, off-street parking,
on bus line. Call Kylie at
614-313-6633.
kylemccaw@hotmail.com

222 W. Lane Ave. Luxury 2 bed-
room across from OSU Busi-
ness College. Great views, all
utilities & housekeeping in-
cluded. Call 294-5551.

50 W. 10th Ave. Recently remod-
eled 2 BDR townhouse, central
air, deck, parking, ceiling fans,
W/D in unit, and 1 bath. Buck-
eye Real Estate, 294-5511.
www.buckeyerealestate.com

AFFORDABLE 2 bedrooms.
Southwest campus area, near
Law & Med Schools, west of
High St. Low deposits, off-street
parking, laundry facilities avail-
able. Call 299-2900.
www.studenthousingosu.com

FURNISHED 3 BEDROOM

222 W. Lane Ave. Luxury 3 bed-
room across from OSU Busi-
ness College. Great views, all
utilities & housekeeping in-
cluded. Call 294-5551.

FURNISHED 4 BEDROOM

210 E. Oakland N. campus Re-
modelled 4-5 bedroom, new ap-
pliances, new W/D, low utilities
\$783-6625.

4 BEDROOM apartments, prime
location on E. 17th, 1/2 block
from High. Big bedrooms, free
washer/dryer, dishwasher, off-
street parking, security system,
beginning Fall 2004/5. Call
761-9035.

4 BEDROOM penthouse across
from the college of business.
Large living room anywhere
nonsensory view of campus ap-
proach, 2 baths, leather furni-
ture, completely remodeled. All
utilities and biweekly housekeep-
ing included! Call now for a
tour! 294-5551.

4 BEDROOM penthouse across
from the college of business.
Large living room anywhere
nonsensory view of campus ap-
proach, 2 baths, leather furni-
ture, completely remodeled. All
utilities and biweekly housekeep-
ing included! Call now for a
tour! 294-5551.

FURNISHED 5+ BEDROOM

GORGEOUS 5-6 bedroom
apartment, 1 block from hospital &
medical school. Central A/C &
laundry. 2 full baths & 2 1/2
baths. Steve 208-3111.

UNFURNISHED RENTALS

222 W. Lane Ave. Offering indi-
vidual lease contracts & room-
mate matching in 2, 3, or 6 bed-
room luxury apartments. Across
from OSU Business College. All
utilities & housekeeping in-
cluded. Call 294-5551.

UNFURNISHED 1 BEDROOM

#1 GRAD House. Medical school
area. 1456 Neil Ave. Lots of win-
dows. Utilities paid, quiet, non-
smoking, clean, freshly painted,
central air, laundry, parking. Mid
\$400s, several to choose from.
Free high speed internet. Aug-
Sept Move-in. Check out the
web site and drive by the loca-
tion. http://members.ee.net/teking/
Owner-Broker 421-7117

UNFURNISHED 2 BEDROOM

222 W. Lane Ave. Offering indi-
vidual lease contracts & room-
mate matching in 2, 3, or 6 bed-
room luxury apartments. Across
from OSU Business College. All
utilities & housekeeping in-
cluded. Call 294-5551.

AVAILABLE NOW & fall. Extensi-
vely remodeled studio suites in
prime locations. Air-conditioning,
on-site laundry facilities, off-
street parking. Furniture avail-
able. \$395-\$445/month, short
term lease available. All utilities
paid! 291-5001.

**NEIL - N of Lane @ West Tomp-
kins.** Deluxe furnished 1 large
14 x 18 bedroom. A/C, carpet,
stove, refrigerator, microwave
and large computer desk, clean,
quiet, reasonable. Ideal for Grad
or serious students. All utilities
\$480/month. 614-832-6989.

SOUTH CAMPUS upstairs cozy
1 bedroom w/office, modest uti-
lity bills, quiet street. \$400/mo.
No pets. Off-street parking, laun-
dry. 523-4075

UNFURNISHED 2 BEDROOM

0 UTILITIES. 1-2 bedrooms, flexi-
ble lease periods, super conven-
ient location, 38 E. 17th Ave.,
laundry, off-street parking,
\$300-\$450 per month. 263-1193
or 296-6304.

1 AVAILABLE NOW. 65 W. 8th
Ave. Very nice large 2 BR. A/C,
clean, off-street parking, own
W/D, dishwasher, fridge. Alex
614-205-4608.

FURNISHED 5+ BEDROOM

5 BEDROOM penthouse across
from the college of business.
Gorgeous view of campus and
downtown, 2 baths, leather furni-
ture, completely remodeled. All
utilities and biweekly housekeep-
ing included! Call now for a
tour! 294-5551

UNFURNISHED RENTALS

1 & 2 bedroom apartments - 5
min. west of Lennox. No pets.
www.ColonyClubOhio.com
488-4817 or 488-1214.

1-6 Bedroom. Spacious apart-
ments - house. Fireplace. One
block to shopping, park, tennis &
more. 294-4444.

1-2 BEDROOM apartments,
new thru fall, flats, carpeted, re-
modeled, 401c E. 14th Ave.,
W/D, parking, \$360/month w/wa-
ter. Call 406-1849.

1-2/3 BR available fall.
Woodruff Ave. or North Cam-
pus. 296-8353 day 847-7553
evenings.

1-5 BEDROOM houses and
apartments. Many price ranges.
Call RZ Realty 486-7070.
www.rzrealty.com

1-5 BEDROOMS. Nice remod-
eled apts & houses. North Cam-
pus area. Dishwasher, Mini-
blinds, off-street parking.
354-8870.

161 E. Frambes Ave. Group
House, 1, 2, 3. Bed units Avail-
able Fall. 291-1577 Anytime.

16TH NEAR High. Available now
not Fall, 3-4 bedroom newly re-
modelled, w/new kitchen, 2 new
baths, huge living area, parking
W/D, A/C, safe and convenient.
\$300/bedroom. 253-8182 or
www.hometeamproperties.net

2 BEDROOM. 18th Ave. Living
room, large bedrooms, central
air, D/W, disposal, ceramic tile
bathroom & kitchen, new win-
dows, microwave, gas heat,
laundry, off-street parking. Fall
571-5109.

2/3 BDRM half house. Very nice,
carpet, large, located at 13th
Ave. and N. 4th St. \$475.
475-5523.

4-BEDROOM Town Homes
Frambes Ave. OSU North D/W -
Disposal. A/C, safe and conven-
ient. New Gas Furnace - new
Windows - Free Water - W/D
Free - OS Parking Free - Sun
Decks Bike Racks Fall
571-5109

A LUXURY room for rent. All
utilities included. \$295 - \$450.
Short term lease. Free on-site
laundry, gourmet kitchen, won't
last - call Bret today! 291-7639.

AVAILABLE NOW 1, 2, 3, 4
and 5 bedroom units. Super lo-
cation, parking, air conditioning,
dishwasher, washer and dryer.
273-7775.

UNFURNISHED 2 BEDROOM

AVAILABLE NOW! 1350 1/2
Dennison Ave. Upstairs apart-
ment, large living rm dining rm,
W/D included, off street parking.
\$600 month 614-507-1344 or
614-879-7714.

Campus' Best Kept Secret!
Alexandria Colony
For details
on our Spacious
2 and 3 Bedrooms,
Call 461-9017

UNFURNISHED RENTALS

222 W. Lane Ave. Offering indi-
vidual lease contracts & room-
mate matching in 2, 3, or 6 bed-
room luxury apartments. Across
from OSU Business College. All
utilities & housekeeping in-
cluded. Call 294-5551.

AVAILABLE NOW & fall. Extensi-
vely remodeled studio suites in
prime locations. Air-conditioning,
on-site laundry facilities, off-
street parking. Furniture avail-
able. \$395-\$445/month, short
term lease available. All utilities
paid! 291-5001.

**NEIL - N of Lane @ West Tomp-
kins.** Deluxe furnished 1 large
14 x 18 bedroom. A/C, carpet,
stove, refrigerator, microwave
and large computer desk, clean,
quiet, reasonable. Ideal for Grad
or serious students. All utilities
\$480/month. 614-832-6989.

SOUTH CAMPUS upstairs cozy
1 bedroom w/office, modest uti-
lity bills, quiet street. \$400/mo.
No pets. Off-street parking, laun-
dry. 523-4075

UNFURNISHED 2 BEDROOM

0 UTILITIES. 1-2 bedrooms, flexi-
ble lease periods, super conven-
ient location, 38 E. 17th Ave.,
laundry, off-street parking,
\$300-\$450 per month. 263-1193
or 296-6304.

1 AVAILABLE NOW. 65 W. 8th
Ave. Very nice large 2 BR. A/C,
clean, off-street parking, own
W/D, dishwasher, fridge. Alex
614-205-4608.

UNFURNISHED RENTALS

COLDWELL BANKER Commer-
cial... Various N. Campus loca-
tions available now & fall, newly
renovated, 1-5 BR units. Call
358-RENT today!

FALL RENTALS

One Bedroom:
100 E. Frambes Ave \$465

Two Bedrooms:
131 W North Ave \$650-775
1271 Hunter Ave. \$595

* A/C, Carpet, GE appl.

* Mini blinds, Ceiling fans

* Excellent maintenance

* Newly painted, cleaned

* Off-st. lighted parking

MONARCH
RENTALS, LTD.

614/447-2500
www.monarchosu.com

NO PETS PLEASE!

FIRST MONTH free. Modern,
clean, 2 and 3 bedroom town-
houses. Carpet, basement, w/d
hookups, C/A. \$600 and \$650.
Call 784-0656.

FORGET the roommate. You
can afford to live here without
one. 1 bd apt. starting at \$395.
Free ride to OSU, 24 hour main-
tenance. Riverside Place Apart-
ments. 614-262-4127

G.A.S Properties
2425 N. High St.
Phone 263-2665
Fax 263-0543

In business since 1967
Now renting for Fall
Office hours: M-F 9-6
Sat 11-5

We offer Efficiencies plus
1, 2, 3, 4 & 5
bdrm apts, 1/2 bbls
& homes in
N., Central & S. Campus

Call us for an appointment
stop by our office to pick up
our property guide
or visit us on web

www.GASproperties.com

HOUSE FOR RENT. Upper Arling-
ton, Hilliard, Victorian style
and OSU locations from
\$450-\$1980/month. Eff., 3br,
4br, and 5brs. All appliances, pri-
vate office, FF, A/C, W/D, hard-
wood floors. Please call
771-1111 or www.7Rent.com

HUGE OSU Winter Discount! 1
Bd \$299, 2Bd \$399, 3Bd \$499
and up! New and Clean. North-
Steppe Realty 299-4110.
www.ohiosstaterentals.com

N. High St. Neil, etc.
Southwest Campus Area
Apartments & Half-Doubles
University Apartments
65 W. 9th Avenue

291-5416
299-6840

NORTH CAMPUS area. Large 1
& 2 bedroom newly renovated.
New carpet, vinyl, doors, win-
dows. Close to laundry facilities,
off-street parking, flexible lease.
No pets. Only \$275/month or
\$350/month. Call 402-3778.

UNFURNISHED RENTALS

152-160 E. 11th Ave.

1545 Indianola Ave.

97-99 E. 11th Ave.

2 Bedrooms

100 E. 11th Ave.

113 E. 11th Ave.

121 E. 11th Ave.

127-141 E. 11th Ave.

128 E. 11th Ave.

128 E. 11th Ave.

165 E. 11th Ave.

UNFURNISHED RENTALS

HIGH-RISE
SUITES
FREE Carpet
Heat & A/C
CHECK US OUT!

Our ALL SUITE Building
is convenient to the Short
North, OSU Grandview,
Lennox Shopping and Up-
per Arlington

**UNFURNISHED
1 BEDROOM**

0 UTILITIES. Small 1 bdr apt in large house for women, \$320/month, 1876 N. 4th St., parking, 421-9801.

1 & 2 bedroom apartments - 5 min. west of Lennox. No pets, www.ColonyClubOhio.com 486-4817 or 488-1214.

1 BD. apartments. Locations: 151 W. 9th, 1522 Highland Ave., 71 E. 13th Ave., 1885 N. 4th St., 1036 Michigan Ave. Call for info, RZ Realty 486-7070, www.rzreality.com

1 BDRM 18th & 4th. FURNITURE LAYOUT carpet, newly remodeled, dishwasher, A/C, Fall 04, \$375/mo. Pavich Properties 263-1565

1 BDRM Apartments, 161 E. Norwich Ave. Great Location, C/Air, OSP, NO PETS. \$425/Mo. Call 263-3600, www.cooper-properties.com

1 BDRM condo for rent. Bethel and Godown area. \$495/month, heat included. Call Laurie 614-861-9835.

1 BEDROOM apartment, N. Campus, full rental, AC, off-street parking, new carpet. Call 771-7798

1 BEDROOM. Heat & hot water paid. Close to Law & Medical building. \$380/mo. A/C 554-4497

1 BEDROOM, nice apartment, Italian Village, No pets. Please call 294-4979, M.F. 10am-5pm.

1 BEDROOM, now/winter, A/C, off-street parking, spacious, 126-146 Chittenden, No pets. \$500-\$585. (740) 994-0242 (free).

1 BEDROOMS at 299 E. 17th Ave. \$450/mo. Available April 1st and September 1st. (740) 363-4873.

1 BEDROOMS, south campus from \$275.00. 291-5416/299-6840.

1 BR, 15th & Summit. AC, huge, carpet, laundry. 273-7775.

1 bedroom - North OSU. Riverview Dr. Liv. rm, kitchen, bath, A/C, gas heat, laundry, O.S.P., water paid. Ideal for grad student. Available now & fall. 571-5109.

100 E. 11th Ave. #A. Newly remodeled 1 bedroom flat offers all new appliances including dishwasher and W/D, a private bathroom, microwave, alarm system and parking. Buckeye Real Estate, 294-5511. www.buckeye-realestate.com

100 E. Norwich Ave. 1 Bedroom flats offers A/C, off-street parking, & a great campus location. Call 294-5511. www.buckeye-realestate.com

100 W. 9th Ave. 1 BDR flats with new kitchens and baths, A/C, on-site laundry, dishwasher, new windows and parking. Close to medical campus. Buckeye Real Estate, 294-5511. www.buckeye-realestate.com

100 W. 9th Ave. 1 BDR flats with new kitchens and baths, A/C, on-site laundry, dishwasher, new windows and parking. Close to medical campus. Buckeye Real Estate, 294-5511. www.buckeye-realestate.com

105 CHITTENDEN Ave. Large 1 BDR flats, front deck, parking, carpeting and some have dishwashers. 1 remodeled unit available. Buckeye Real Estate, 294-5511. www.buckeye-realestate.com

107 E. 16th Ave. 1 BDR flats, unbeatable location, with on-site laundry, A/C, and parking. Buckeye Real Estate, 294-5511. www.buckeye-realestate.com

113 E. 11th Ave. 1 BDR flats with dishwasher, A/C, deck and parking. Buckeye Real Estate, 294-5511. www.buckeye-realestate.com

121 E. 11th Ave. - Large 1 bedroom flats, carpeting, front porch, and parking. Buckeye Real Estate, 294-5511. www.buckeye-realestate.com

121 E. 11th Ave. Large, spacious 1 BDR flats, carpeting, front porch, and parking. Buckeye Real Estate, 294-5511. www.buckeye-realestate.com

133 W. Blake Ave. Very spacious 1 BDR flat with carpeting and rear deck located North of campus near Tuttle Park. Buckeye Real Estate, 294-5511. www.buckeye-realestate.com

135-137 E. 12th Ave. Spacious 1 BDR flats with a front porch, on-site laundry, and parking. Buckeye Real Estate, 294-5511. www.buckeye-realestate.com

14-22 E. 12th Ave. Recently remodeled 1 BDR flats offer dishwasher, microwave, W/D, new carpet, a closed circuit security system, and basic cable included. 294-5511. www.buckeye-realestate.com

1404 INDIANOLA Ave. 1 YR. lease, 1 bdr w/ stove, refrigerator, W/A, C, cat ok, off-street parking. Remodeled, hard wood carpet. Available now. \$335/mo. 614-560-1814.

149 E. 11th Ave. 1 BDR flats with a/c, deck, parking, alarm system available, and on-site laundry. 1 remodeled unit. \$520/mo. Call Ryan at 294-3263 or Buckeye Real Estate, 294-5511. www.buckeye-realestate.com

1522 WORTHINGTON Ave. #A. B. Spacious units! Fantastic Location! Parking Available! Call 294-5511. www.buckeye-realestate.com

1545 INDIANOLA Ave. 1 BDR flats offer central air, front deck, dishwasher, coin on laundry, and parking. Buckeye Real Estate, 294-5511. www.buckeye-realestate.com

155-158 CHITTENDEN Ave. Roomy 1 BDR flat located close to classes with parking, A/C, coin-on laundry, and some units with a front porch. Buckeye Real Estate, 294-5511. www.buckeye-realestate.com

16 E. Norwich - 1 bedroom lots of space, historic architecture, sun porch, hardwood floors, deck, charming \$595 NorthSteppe Realty 294-5511. www.OhioStateRentals.com

1694-1702 N. High St. Recently remodeled 1 BDR flats offer dishwasher, microhond, W.D. new carpet, a closed-circuit security system, and basic cable included. Buckeye Real Estate, 294-5511. www.buckeye-realestate.com

170 W. Maynard Ave. 1 BDR flat located in Chestnut Hills. Unit offers central air, dishwasher, coin-on laundry, and parking. Call Chads at 267-1096 or Buckeye Real Estate, 294-5511. www.buckeye-realestate.com

175-191 W. 9th Ave. 1 BDR flats with A/C, parking, and on-site coin on laundry. Buckeye Real Estate, 294-5511. www.buckeye-realestate.com

1826B SUMMIT St. Wash-er/dryer, dishwasher, off-street parking, security system. \$485 Pettit Properties 523-0611.

186 & 214 E. 1 bdr 1st bdr flats available for fall. No campus w/d in Indianola. A/C, new w/spaceous units. Gas heat, A/C, blinds, Indry nearby, off-street pkg. Must see. G.A.S. Properties 263-2665

1919 INDIANOLA #B. Large 1 BDR flat, A/C, new kitchen, dishwasher, and parking. Hot water included. Buckeye Real Estate, 294-5511. www.buckeye-realestate.com

194 E. 11th Ave. A/C, Newly remodeled 1 BDR flat, new kitchen, dishwasher, A/C, deck, and parking. All utilities included! Call Buckeye Real Estate, 294-5511. www.buckeye-realestate.com

1984 N. 4th St. Nice large one bedroom with hardwood floors. Great location just north of 19th, off-street parking. \$425. 294-9464.

1996 & 1998 Summit St. Spacious 1 BR flats with parking, front porch, and some units with a front porch. Buckeye Real Estate, 294-5511. www.buckeye-realestate.com

2157 SUMMIT, carpet, A/C, appliances, off-street parking, \$375/month. 486-7779.

**UNFURNISHED
1 BEDROOM**

20 E. 14th - 1 bedroom. Across from Starbucks! Lots of space, ceramic tile, huge living room, parking, \$525 & up. NorthSteppe Realty, 294-5511. www.buckeye-realestate.com

2083 N. 4th - 1 bedroom. Beautiful location, living room overlooks Lake Ravine. Ceiling fans, mini blinds, on-site laundry, parking available. \$525. NorthSteppe Realty, 294-5511. www.buckeye-realestate.com

2125 UKA. 1 BDR flats with balconies overlooking Lake Ravine A/C, on-site laundry, and parking. Buckeye Real Estate, 294-5511. www.buckeye-realestate.com

2196-2200 WALDECK. 1 bedroom all natural woodwork, quiet street, beautiful environment, sun room, eat-in kitchen, lots of light, alarm system, dishwashers, free washer/dryer. Call 294-5511. www.OhioStateRentals.com

2196-2200 WALDECK. 1 bedroom all natural woodwork, quiet street, beautiful environment, sun room, eat-in kitchen, lots of light, alarm system, dishwashers, free washer/dryer. Call 294-5511. www.OhioStateRentals.com

2206 SUMMIT. 1 BDR flat located in north campus. Very Affordable! Buckeye Real Estate, 294-5511. www.buckeye-realestate.com

24-26 W. 10th Ave. Spacious 1 BDR flat, A/C, new kitchen, near the Law School. Buckeye Real Estate, 294-5511. www.buckeye-realestate.com

2425 N. High St. -1 bdrn flats avail. now or for fall. N. campus, on the bus line between Maynard and Godown area. Call 294-5511. www.buckeye-realestate.com

2425 N. High St. -1 bdrn flats avail. now or for fall. N. campus, on the bus line between Maynard and Godown area. Call 294-5511. www.buckeye-realestate.com

2425 N. High St. -1 bdrn flats avail. now or for fall. N. campus, on the bus line between Maynard and Godown area. Call 294-5511. www.buckeye-realestate.com

2425 N. High St. -1 bdrn flats avail. now or for fall. N. campus, on the bus line between Maynard and Godown area. Call 294-5511. www.buckeye-realestate.com

2425 N. High St. -1 bdrn flats avail. now or for fall. N. campus, on the bus line between Maynard and Godown area. Call 294-5511. www.buckeye-realestate.com

2425 N. High St. -1 bdrn flats avail. now or for fall. N. campus, on the bus line between Maynard and Godown area. Call 294-5511. www.buckeye-realestate.com

2425 N. High St. -1 bdrn flats avail. now or for fall. N. campus, on the bus line between Maynard and Godown area. Call 294-5511. www.buckeye-realestate.com

2425 N. High St. -1 bdrn flats avail. now or for fall. N. campus, on the bus line between Maynard and Godown area. Call 294-5511. www.buckeye-realestate.com

2425 N. High St. -1 bdrn flats avail. now or for fall. N. campus, on the bus line between Maynard and Godown area. Call 294-5511. www.buckeye-realestate.com

2425 N. High St. -1 bdrn flats avail. now or for fall. N. campus, on the bus line between Maynard and Godown area. Call 294-5511. www.buckeye-realestate.com

2425 N. High St. -1 bdrn flats avail. now or for fall. N. campus, on the bus line between Maynard and Godown area. Call 294-5511. www.buckeye-realestate.com

2425 N. High St. -1 bdrn flats avail. now or for fall. N. campus, on the bus line between Maynard and Godown area. Call 294-5511. www.buckeye-realestate.com

2425 N. High St. -1 bdrn flats avail. now or for fall. N. campus, on the bus line between Maynard and Godown area. Call 294-5511. www.buckeye-realestate.com

2425 N. High St. -1 bdrn flats avail. now or for fall. N. campus, on the bus line between Maynard and Godown area. Call 294-5511. www.buckeye-realestate.com

2425 N. High St. -1 bdrn flats avail. now or for fall. N. campus, on the bus line between Maynard and Godown area. Call 294-5511. www.buckeye-realestate.com

2425 N. High St. -1 bdrn flats avail. now or for fall. N. campus, on the bus line between Maynard and Godown area. Call 294-5511. www.buckeye-realestate.com

2425 N. High St. -1 bdrn flats avail. now or for fall. N. campus, on the bus line between Maynard and Godown area. Call 294-5511. www.buckeye-realestate.com

2425 N. High St. -1 bdrn flats avail. now or for fall. N. campus, on the bus line between Maynard and Godown area. Call 294-5511. www.buckeye-realestate.com

2425 N. High St. -1 bdrn flats avail. now or for fall. N. campus, on the bus line between Maynard and Godown area. Call 294-5511. www.buckeye-realestate.com

2425 N. High St. -1 bdrn flats avail. now or for fall. N. campus, on the bus line between Maynard and Godown area. Call 294-5511. www.buckeye-realestate.com

2425 N. High St. -1 bdrn flats avail. now or for fall. N. campus, on the bus line between Maynard and Godown area. Call 294-5511. www.buckeye-realestate.com

2425 N. High St. -1 bdrn flats avail. now or for fall. N. campus, on the bus line between Maynard and Godown area. Call 294-5511. www.buckeye-realestate.com

2425 N. High St. -1 bdrn flats avail. now or for fall. N. campus, on the bus line between Maynard and Godown area. Call 294-5511. www.buckeye-realestate.com

2425 N. High St. -1 bdrn flats avail. now or for fall. N. campus, on the bus line between Maynard and Godown area. Call 294-5511. www.buckeye-realestate.com

2425 N. High St. -1 bdrn flats avail. now or for fall. N. campus, on the bus line between Maynard and Godown area. Call 294-5511. www.buckeye-realestate.com

2425 N. High St. -1 bdrn flats avail. now or for fall. N. campus, on the bus line between Maynard and Godown area. Call 294-5511. www.buckeye-realestate.com

2425 N. High St. -1 bdrn flats avail. now or for fall. N. campus, on the bus line between Maynard and Godown area. Call 294-5511. www.buckeye-realestate.com

2425 N. High St. -1 bdrn flats avail. now or for fall. N. campus, on the bus line between Maynard and Godown area. Call 294-5511. www.buckeye-realestate.com

2425 N. High St. -1 bdrn flats avail. now or for fall. N. campus, on the bus line between Maynard and Godown area. Call 294-5511. www.buckeye-realestate.com

2425 N. High St. -1 bdrn flats avail. now or for fall. N. campus, on the bus line between Maynard and Godown area. Call 294-5511. www.buckeye-realestate.com

2425 N. High St. -1 bdrn flats avail. now or for fall. N. campus, on the bus line between Maynard and Godown area. Call 294-5511. www.buckeye-realestate.com

2425 N. High St. -1 bdrn flats avail. now or for fall. N. campus, on the bus line between Maynard and Godown area. Call 294-5511. www.buckeye-realestate.com

2425 N. High St. -1 bdrn flats avail. now or for fall. N. campus, on the bus line between Maynard and Godown area. Call 294-5511. www.buckeye-realestate.com

2425 N. High St. -1 bdrn flats avail. now or for fall. N. campus, on the bus line between Maynard and Godown area. Call 294-5511. www.buckeye-realestate.com

2425 N. High St. -1 bdrn flats avail. now or for fall. N. campus, on the bus line between Maynard and Godown area. Call 294-5511. www.buckeye-realestate.com

2425 N. High St. -1 bdrn flats avail. now or for fall. N. campus, on the bus line between Maynard and Godown area. Call 294-5511. www.buckeye-realestate.com

2425 N. High St. -1 bdrn flats avail. now or for fall. N. campus, on the bus line between Maynard and Godown area. Call 294-5511. www.buckeye-realestate.com

2425 N. High St. -1 bdrn flats avail. now or for fall. N. campus, on the bus line between Maynard and Godown area. Call 294-5511. www.buckeye-realestate.com

2425 N. High St. -1 bdrn flats avail. now or for fall. N. campus, on the bus line between Maynard and Godown area. Call 294-5511. www.buckeye-realestate.com

2425 N. High St. -1 bdrn flats avail. now or for fall. N. campus, on the bus line between Maynard and Godown area. Call 294-5511. www.buckeye-realestate.com

2425 N. High St. -1 bdrn flats avail. now or for fall. N. campus, on the bus line between Maynard and Godown area. Call 294-5511. www.buckeye-realestate.com

2425 N. High St. -1 bdrn flats avail. now or for fall. N. campus, on the bus line between Maynard and Godown area. Call 294-5511. www.buckeye-realestate.com

2425 N. High St. -1 bdrn flats avail. now or for fall. N. campus, on the bus line between Maynard and Godown area. Call 294-5511. www.buckeye-realestate.com

2425 N. High St. -1 bdrn flats avail. now or for fall. N. campus, on the bus line between Maynard and Godown area. Call 294-5511. www.buckeye-realestate.com

**UNFURNISHED
2 BEDROOM**

#1 OSU Hospital area 1496 Belmont Ave. 2 bedroom townhouse quiet, clean, freshly painted, central air, laundry, parking, \$650/mo. free hot water, utilities, freshly painted, Brinks security systems, on-site laundry facilities & plenty of parking. Between Gateway Project & North Campus. \$400-\$500/month. Short term leases available. Call Zach 614-404-7531.

#114* UPDATED 2BDR apartment available for fall 2004 school year. New wall to wall carpet, party decks, and lighted off-street parking. We have apartments and townhouses available in north, central, & south campus locations starting as low as \$260-\$380 per person. Call for your showing today! 294-7067.

#1- \$490-\$650/mo. South Campus, avail spring & fall. 04, DW, new carpet, off-street parking, near Law & Med Schools, pets possible. \$490-\$650. Call 294-5511. www.JBProperties.net

\$495 AND UP, various sizes, Clintonville south-north OSU area, laundry hook-ups, and may include some utilities, pets ok. \$297-3858.

\$499, MOVE IN NOW! Newly renovated with lots of light; includes new carpet, ceiling fans, mini-blinds, central AC, blinds, ceramic tile, new cabinets, kitchens & bathrooms, parking available. NorthSteppe Realty, 299-4110. www.OhioStateRentals.com

\$500 MOVES you in 2 bedroom apartment, 1840 N. 4th. Hardwood floors, off-street parking, \$500/mo. includes all utilities. \$399-1509.

\$690 250 E. 13th Townhouse includes washer/dryer, new kitchen, big basement, newer kitchen. Available 9/5. 371-5690. ohioastaterentals.com

\$740/MO., 2 bdr for fall, 1986 Indianola Ave., & Woodruff Ave., spacious, recently remodeled, air conditioning, dishwasher, central heat & A/C, new windows, blinds, low utilities, off-street parking, laundry on-site. George Kanelopoulos, 299-9940. www.cooper-properties.com

100 E. 11th Ave. Newly remodeled 2 bedroom flat features w/d, central air, dishwasher, porch, and parking. Buckeye Real Estate, 294-5511. www.buckeye-realestate.com

100 W. 9th Ave. Recently remodeled 2 bedroom flat, parking, A/C, laundry, and dishwasher, and new windows. Located near the medical school. Call Buckeye Real Estate at 294-5511. www.buckeye-realestate.com

102 W. 8th - 2 bdr Modern Bldg w/ security system, D/W, A/C, ceramic tile flrs, fans, blinds, new carpet. Off-St. pkg must see. \$495. Call 294-5511. www.GASProperties.com

106 - 114 E. Lane Ave. 2 bedroom townhouses, carpeting, A/C, parking, some remodeled units, call Buckeye Real Estate at 294-5511. www.buckeye-realestate.com

112 W. King - 2 bdr TH Victorian Vlg. area avail for fall, very spacious, w/ 1 1/2bath, bsmt, A/C, new carpet, blinds, porch & yard area. Garages avail, huge lot. Call 294-5511. www.GASProperties.com

113 E. 11th Ave. #C Newly remodeled 2 bedroom townhouse, 1.5 baths, dishwasher, parking, skylights, carpet, and central air. Buckeye Real Estate, 294-5511. www.buckeye-realestate.com

120 W. Norwich Ave. Recently remodeled 2 bedroom flat, dishwasher, central air, new windows, off-street parking, and central air. Buckeye Real Estate, 294-5511. www.buckeye-realestate.com

121 E. 11th Ave. 2 Bedroom townhouse features carpeting, front deck & off-street parking. Buckeye Real Estate, 294-5511. www.buckeye-realestate.com

127 - 141 E. 11th Ave. 2 bedroom apartments, some feature A/C bsmt, front porch, dishwasher, on-site laundry, and parking. Buckeye Real Estate, 294-5511. www.buckeye-realestate.com

127/174 14TH Ave. Wash-er/dryer, new kitchen, new carpet, parking, security system. \$760. Pettit Properties 523-0611.

128 E. 11th Ave. 2 bedroom flat, front porch, parking, and bsmt. Buckeye Real Estate, 294-5511. www.buckeye-realestate.com

12TH Ave. Well located 2 BDR w/ A/C, new kitchen, fans and blinds, W/D and dishwashers, courtyard. Parking available. \$549 and up. NorthSteppe Realty, 299-4110. www.OhioStateRentals.com

12TH NEAR High. Large 2 bedroom apartment, safe & convenient, gated community, remodeled, w/d, new wood floors, off-street parking, A/C, mini-blinds, parking, and security cameras for your peaceful enjoyment. \$275/person. 253-8182 or www.hometeamproperties.net. Click on "University Commons."

130 W. 9th - 2 bdr flats avail for fall. Modern Bldg completely new, new kitchen, fans and blinds, W/D and dishwashers, courtyard. Parking available. \$549 and up. NorthSteppe Realty, 299-4110. www.OhioStateRentals.com

130 W. 9th - 2 bdr flats avail for fall. Modern Bldg completely new, new kitchen, fans and blinds, W/D and dishwashers, courtyard. Parking available. \$549 and up. NorthSteppe Realty, 299-4110. www.OhioStateRentals.com

130 W. 9th - 2 bdr flats avail for fall. Modern Bldg completely new, new kitchen, fans and blinds, W/D and dishwashers, courtyard. Parking available. \$549 and up. NorthSteppe Realty, 299-4110. www.OhioStateRentals.com

130 W. 9th - 2 bdr flats avail for fall. Modern Bldg completely new, new kitchen, fans and blinds, W/D and dishwashers, courtyard. Parking available. \$549 and up. NorthSteppe Realty, 299-4110. www.OhioStateRentals.com

130 W. 9th - 2 bdr flats avail for fall. Modern Bldg completely new, new kitchen, fans and blinds, W/D and dishwashers, courtyard. Parking available. \$549 and up. NorthSteppe Realty, 299-4110. www.OhioStateRentals.com

130 W. 9th - 2 bdr flats avail for fall. Modern Bldg completely new, new kitchen, fans and blinds, W/D and dishwashers, courtyard. Parking available. \$549 and up. NorthSteppe Realty, 299-4110. www.OhioStateRentals.com

130 W. 9th - 2 bdr flats avail for fall. Modern Bldg completely new, new kitchen, fans and blinds, W/D and dishwashers, courtyard. Parking available. \$549 and up. NorthSteppe Realty, 299-4110. www.OhioStateRentals.com

130 W. 9th - 2 bdr flats avail for fall. Modern Bldg completely new, new kitchen, fans and blinds, W/D and dishwashers, courtyard. Parking available. \$549 and up. NorthSteppe Realty, 299-4110. www.OhioStateRentals.com

1

Man dead after Daytona accident

By Paul Newberry
Associated Press

DAYTONA BEACH, Fla. — A paraplegic wanted to pursue his love of racing. A worker trying to do his job in the middle of the track. A tragic Daytona accident that's sure to spur debate about yellow flags and disabled drivers.

A 44-year-old worker was killed Sunday by a car going more than 100 mph, struck down while picking up debris during a preliminary race for next weekend's Daytona 500.

The driver, Ray Paprota, is the first known paraplegic to race in a national stock car series. He controlled his car with levers, buttons and knobs located on or around the steering wheel.

"I'm sure they're going to point the finger at him," said Wally Leatherwood, a fellow driver in the IPOWER Dash 150.

Roy H. Weaver III, who worked at Daytona International Speedway for seven years, was in the middle of turn two picking up debris during a caution period when he was killed, track spokesman David Talley said.

Paprota, who has not had use of his legs since a 1984 auto accident, was trying to catch the main pack of cars after a two-car crash at the opposite end of the track brought out a yellow flag.

Paprota's colleagues rallied around him, saying the mishap could have happened to any of them.

"A procedure needs to be developed that would slow the cars down when track workers are physically on the track," Leatherwood said. "It's sad that it takes something like this to get their attention."

He questioned whether workers should be allowed on to the

track while cars are running — even at slower speeds under yellow. And, as in this case, drivers are allowed to speed up to get back in line behind the safety car after coming out of the pits.

"The guy went on the race track to do his job and he was killed," Leatherwood said. "They shouldn't be on the track unless they're 100 percent sure there's no danger."

Jeff Tillman, who was running behind Paprota, said the accident occurred at the most vulnerable spot on the track. Weaver was standing in the middle of the track and flipped over Paprota's car after being struck.

"It's blind in there," Tillman said. "You have maybe 200 yards of visibility at 120 mph."

The race was red-flagged for one and a half hours, running to the finish under the lights after police investigated the scene and took pictures of Paprota's car in the garage.

Paprota was loaded into a wheelchair-accessible van and left the track without discussing the accident with reporters.

"I'm sorry," he said. "I can't say anything."

In the past, the 41-year-old New Jersey native spoke of the satisfaction he got from racing. "Just being able to hop into a race car and leave my wheelchair behind is the greatest achievement," said Paprota, who founded a team known as Pioneer Racing. "To know that I'm going toe-to-toe with my able-bodied peers — and that I'm respected for my ability on the track and behind the wheel — is the greatest rush going."

Weaver, supervisor of the track crew, was the 36th person to die during an event at Daytona, the



JIM TILLER/AP

Ray Paprota sits behind the wheel of his Dash Series race car before final practice session at Daytona International Speedway Thursday. Paprota is a paraplegic and uses a specially designed steering wheel, throttle on his right, and brake on his left. Paprota was involved in a speedway accident which killed Daytona International Speedway track safety worker Roy Weaver Sunday.

second in four months. Bryan Cassell was killed while practicing for a motorcycle race on Oct. 18.

Dale Earnhardt, a seven-time Winston Cup champion, died at the track on Feb. 18, 2001, when his car hit the wall on the final turn at the Daytona 500.

Danny Bagwell, who won the Dash race, defended Paprota's racing skills.

"I think he's a capable race driver and I think everybody deserves an opportunity," Bagwell said. "We've tried to help him as much as we could."

After his paralyzing wreck, Paprota rehabilitated at the same Birmingham, Ala., hospital where former NASCAR star Bobby Allison recovered from a serious racing crash.

Paprota has moved into the

Hueytown, Ala., racing shop once used by Allison and his late son, Davey.

"We learned about him through Bobby Allison," Bagwell said. "That's a pretty good reference."

Raymond Claypool, an executive with the Dash series, said Paprota raced in three previous series events and tried to qualify for a fourth.

Already cleared to run on five-eighth-mile tracks, he requested to compete this year at Daytona.

"He attended a rookie meeting and went through extensive testing both on and off the track," Claypool said. "We also asked other drivers ... and we felt very confident he was qualified to compete here."

Sports facilities may add skatepark to plans

By Bret Liebendorfer
Lantern staff writer

Skateboarders and BMX riders who tried to enjoy their sport on the Ohio State campus know they risk fines, board or bike impoundment and harassment each time they take to the streets. Few know the Department of Recreational Sports wants to help.

A skatepark was not included in the \$140 million project that will make the OSU recreational sports facilities one of the best in the country, but skateboarders and BMX riders are not being ignored.

"It would be so exciting to add that one additional component that we're currently missing on campus — a true recreation space for bladders, bikers and boarders," said Bruce Maurer, associate director of Satellite and Outdoor Facilities.

The primary obstacle in building a skatepark is the time constraints surrounding the construction of new projects. A Department of Recreational Sports facility is being constructed doubling Larkins Hall, as well as the construction of the Adventure Recreation Center.

The difficulty in building a skatepark will be funding.

"We recently found out about a Tony Hawk foundation," said Jimmy Francis, coordinator for outdoor facilities. "Once things slow down a little bit, we're going to put together a grant proposal which will hopefully secure some money from that foundation to help finance the skatepark."

Essential to constructing a

skatepark would be user participation. Staff and faculty are less likely to support nontraditional sports. This is the criteria in the writing of the grant. With user participation, the project could be a reality before current students graduate.

"Having the opportunity in the future to develop and build a skatepark has to be student-led and student-driven," Maurer said. "The students don't realize how much strength they have and how much persuasive abilities they have."

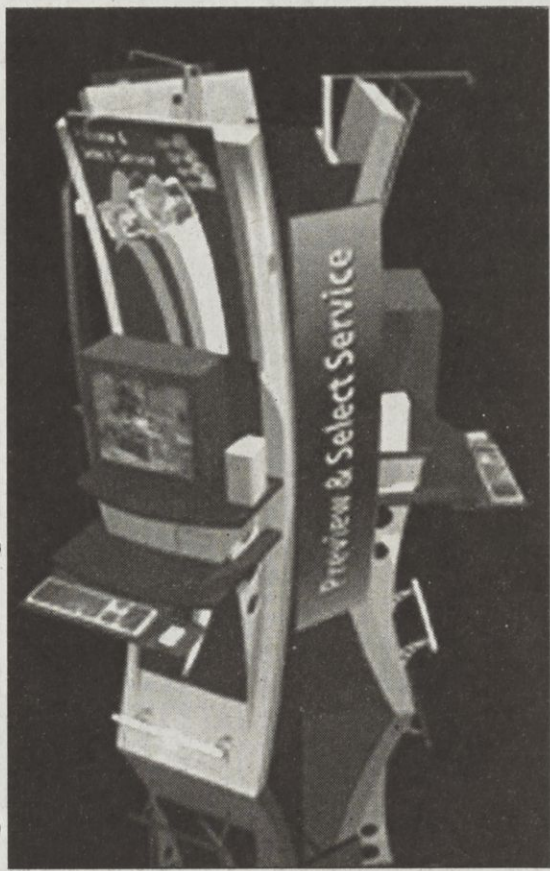
The process of constructing a skatepark is in the beginning stages, no details have been finalized. An estimate of size is 20,000 square feet. This would accommodate skateboarding, BMX and inline skating, Maurer said. Different surfaces make it difficult to project a cost for the park. The Department of Recreational Sports plans to run the skatepark similar to its other outdoor facilities. The facilities would be free to the public until 2 a.m. — no monitors and possibly even lights.

Ideas about how to develop a skatepark are being considered from other skateparks across the country. Members of the Department of Recreational Sports have gone on tours of skateparks in Ohio and other states.

"What's really exciting about skateparks is not the formal head-to-head type of competition you are used to seeing in the element of sport," Maurer said. "What I've seen is people helping people. So everyone is in a very positive relationship. It's a win-win relationship."

ANTERN CLASSIFIEDS • 292-2031

<h3>HELP WANTED GENERAL</h3> <p>PLAY SPORTS! Have fun! Save money! Sports camp in Maine. Coaches needed: tennis, basketball, baseball, water sports, rock climbing, biking, golf, archery, hockey, and more. Work outdoors and have a great summer! Call free: (800) 844-8080 or apply: www.campcar.com</p> <p>PROFESSOR SEKS responsible students for large research project. Training provided for in-depth qualitative interviews. 10-20 hours/week. Start now or spring quarter. \$7-\$11/hour depending upon experience. Contact ganniss.2@osu.edu with resume, letter of interest, references and contact information.</p> <p>PT HOURS w/ FT pay. earn great \$. Must be sales oriented. Please call 638-2283.</p> <p>REAL ESTATE ASSISTANT. Well established real estate brokerage minutes to campus desires self starter with computer skills to answer phones, set up app., prepare marketing materials etc. Call 216-5838.</p> <p>RESPONSIBLE STUDENTS for large research project. Professor seeks responsible students for various tasks on large research project, including data tracking, web work, and library research. 10-20 hours/week. Start now or spring quarter. Contact ganniss.2@osu.edu with resume, letter of interest, references and contact information.</p>	<h3>HELP WANTED GENERAL</h3> <p>RETAIL SALES. Retail store located in northwest Columbus off Bethel Road seeking friendly individual with good communication skills. Sales and office duties. \$8/hour plus commission. Must be available to work M-F 9a to 2p or 2p to 7p and some Saturdays 10a to 6p. Call George 614-451-0204 or email ncpwires@aol.com</p> <h3>STANDARD PARKING Special Events</h3> <p>Choose your own schedule. Good pay rates. Free access to events. We need friendly people to staff the parking facilities at:</p> <p>Nationwide Arena, PromWest Pavilion, OEC/Fairgrounds, Crew Stadium, German Amphitheater & the Schottstein Center.</p> <p>Pre-employee applications are accepted online only at: www.WhenAmIWorking.com</p> <p>VALET PARKERS needed immediately. Evening shifts available. Great pay. Call 246-9819.</p>	<h3>HELP WANTED GENERAL</h3> <p>STUDENTS, PARENTS, teachers. Earn Serious cash, part-time selling sensual products for the market leader. Free website. www.ppylisa.com 1-888-537-9324.</p> <p>SUICIDE PREVENTION. volunteers needed for countrywide hotline. 50 hours crisis intervention training. Psych 693 credit. Training begins in late March. Six month commitment beginning from June 2004 through Nov. 2004. Work six hours per week. Call Susan at 299-6600, ext. 2004.</p> <p>SUMMER IN Maine. Males and females. Meet new friends! Travel Teach your favorite activity. Tennis, Swim, Canoe, Sail, Water Ski, Kayak, Gymnastics, Theatre, Silver Jewelry, Nautics, Copper Enameling, Video, English Riding, Ropes, Pottery, Office, Landscape Sports and more. June to August. Residential. Enjoy our website. Apply on line. Tripp Lake Camp for Girls. 1-800-967-4347. www.tripplakecamp.com</p> <p>TECHNICAL SUPPORT Executive. Energetic Tech support person needed for a small Internet Company. Candidates must have strong Internet customer support skills. Previous work experience at either at ISP or Web Hosting company is preferred, yet not required. Located in Gahanna with FT/PT positions. Pay \$10+/hour. Call 501-9868 ext. 8501.</p> <p>TRAVEL TO DC & NYC. Prodigy Student Travel to add 3 directors for 3 1/2 night chapters for Spring 2004 season. Must be energetic, personable, & enjoy working with 8th graders. Includes training & all expenses paid. Above avg. pay. Background check. Kerry 288-6747 thru 2/23 only.</p> <p>WANTED: COWBOYS & cowgirls to guide tourists and horses through the Rocky Mountains. Come work for the largest horse operation in North America. Write Sombro Ranch, 3300 Airport Road, Boulder, CO 80301 or visit our website at www.sombro.com</p>	<h3>HELP WANTED CHILD CARE</h3> <p>CHILDCARE CENTER in Westerville seeks enthusiastic full-time/part-time preschool and school-age teachers. Must have experience in childcare, early childhood development or elementary education background. Call 690-9024 or fax resume to 890-4703.</p> <p>DUBLIN FAMILY. Part-time Nanny. Need caring sitter for 7 month old daughter in our Dublin home. 2-3 days/week, 8:30-3:30. Nonsmoker with reliable transportation. Please call Kristine at 614-336-0273 or email: kristine@kwesterteide.com</p> <p>LOOKING FOR part-time childcare provider to care for my two sons (kindergarten and 6th grade) in our home, located between Pownall and Delaware. 3 hours/week, approximately 3:00pm-7:00pm M-F with additional hours, possible overnight stays, & possible full-time during summer. Mature, enthusiastic, creative, responsible, caring, dependable individual who loves children & has experience with children. Light household chores, own transportation. References requested, negotiable. Call 740-368-9772.</p> <p>NEEDED! PARTTIME Nanny. Parttime Nanny needed for 2 children, 4 yrs and 10 months, in my home. Position is immediate, M-F, 2:00 to 5:30 PM. Great pay. 614-676-9580</p> <p>PART TIME Caregiver. Sixteen month old & 4 year old boys need someone to care for them 10-20 hours/week. Flexible with time/schedule; some week-ends included; possible Disney travel. Non-smoker with reliable transportation, since we live in Dublin; \$8-\$10/hour, based on compatibility & experience; call 791-0488 to set up an interview & face references.</p>	<h3>HELP WANTED CLERICAL</h3> <p>SECRETARIAL-PART-TIME. Downtown on bus line. 614-221-0888.</p> <h3>HELP WANTED MEDICAL/DENTAL</h3> <p>SLEEP LAB Technician. Full-time 3rd shift Thurs, Fri, Sat night with benefits. Must have RRT, CRT, or RPSGT. Resumes to: jennifer@sleepcareinc.com or fax attn: Jennifer 901-8990.</p> <h3>HELP WANTED RESTAURANT/FOOD SERVICE</h3> <p>BARTENDER TRAINEE'S needed. \$250/day potential. Local positions. 1-800-293-3985 XT. 641.</p> <p>Experienced Cook wanted for Italian eatery located in North Market. Customer service skills a plus. Call 228-2850</p> <p>FLYING PIZZA, Bethel Rd. Counter help, day and night shifts, immediate openings available. Apply in person. 5216 Bethel Center Mall or call 457-2323 weekdays, 2-4pm.</p> <p>MOZART'S - Looking for part time / full time reliable counter help / server. Locations: Cafe Mozart - 4490 Indianola Ave., Mozart Bakery - 2985 N. High St., Mozart N. Market Bakery - 59 Spruce St. 268-3687.</p> <p>RESTAURANT & BANQUET SERVERS. Pay rate \$7.00 with an increase after 200 hours. Flexible work schedule. Applications available at Fawcett Center front desk. Contact Jim @ 292-5834 w/ questions.</p> <p>SERVERS-DAYTIME. Dining room and banquet, FT/PT. Apply in person DaVinci Ristorante, 4740 Reed Rd. 10 minutes north of campus at Henderson Rd. 451-5147.</p>	<h3>HELP WANTED OSU</h3> <p>PART-TIME Student Research Assistant required for Winter and subsequent Quarters in Soil Ecology Laboratory at OSU. Interesting laboratory and field work involving biological assessment and chemical analyses with congenial group. Opportunity to do publishable projects. Call 292-5483 for more information or send e-mail to sollec@osu.edu</p> <h3>HELP WANTED SALES/MARKETING</h3> <p>SAFETY/ENVIRONMENTAL SALES. 14 year old Columbus Safety Company is looking for self motivated, hardworking people to join their sales team. Great opportunity in a growing field. Commission + draw. Excellent benefits. Please fax resume to Beth Jarvis 449-9605</p> <p>TELEMARKETING/INSIDE SALES. morning shift now available 9am-12pm M-F, P.T. FT. Close to campus, on buslines. \$9/hr+ bonuses. Benefits available. Call Bruce Krcow @ 614-429-5150 X 141. Credit Mortgage Services EOE/M/bkrcow@cmsloan.com</p> <h3>HELP WANTED TUTORS</h3> <p>ARABIC TEACHER for individual who has basic knowledge of Arabic. Seeking private instruction from teacher fluent in English & Arabic. Experienced in teaching adult students. Please FAX resume & rates to 451-6441.</p> <p>READING AND WRITING TUTOR NEEDED! I am looking for someone to tutor my 6 year old child in reading and writing. Education major preferred. Please email mthomas9@insight.rr.com if interested.</p>	<h3>FOR SALE AUTOMOTIVE</h3> <p>HAVE A car for sale? List with us and sell it fast. www.24hrAutos.com</p> <p>LEAVING USA. Mini-van Plymouth Voyager, 1992, very good condition. Price US\$1750. Phone 688-0724 (nighttime) and 292-3626 (daytime)</p> <h3>FOR SALE COMPUTERS/ELECTRONICS</h3> <p>BOSE 901 Series 6 speakers. Excellent condition w/black stands. \$499. Call 439-7407.</p> <h3>FOR SALE FURNITURE/APPLIANCES</h3> <p>HEAVY DUTY washer/dryer. \$135 or separate. Can be delivered. 271-5251</p> <h3>FOR SALE MISCELLANEOUS</h3> <p>FLAGS, FLAGS, flags. US, International, Sports, Lawton Flag Supply, 10 minutes up High St. 800-881-6173. www.daytonaflag.com</p> <p>KEGERATOR, BEER Fridge. Various taps, CO2 tank, and spout. Freezer inside too. Also stereo receiver, amp, equalizer, and 5 speakers. \$2100 Fridge, \$1500 Stereo. Call 614-599-6261</p> <h3>FOR SALE PETS</h3> <p>HAMSTERS FOR Free Really cute, 3 boys and 3 girls born Dec. 2003; cages included! Call 746-1100</p> <h3>FOR SALE REAL ESTATE</h3> <p>SEE 10 OSU Area properties for sale. Single family homes and doubles. Visit SalesOneRealty.com and then click on Properties for Sale, or contact Agent Owner Rich Resatka. Office: 848-848x112, Agent Cell: 832-3031</p> <p>1998 TOYOTA Corolla. 125k, automatic, sunroof, some rust. \$850. 595-6117</p> <p>1993 FORD Taurus LX. Gray sedan, 140K miles, automatic, fully loaded, good condition. \$1200. OSU. Call 475-4040.</p> <p>1995 NISSAN Ultima. Excellent condition, LOW miles. Leather interior, 5 speed, 109K miles. Asking price \$2800. 206-7951.</p> <p>1997 AUDI A6 Quattro. leather, sunroof, Bose stereo system, CD and cassette, alloy wheels, 82K miles. \$9500. 846-0160.</p> <p>1997 HONDA Prelude pearl color, 100K miles. Factory spoiler, moonroof, alloys, power windows and locks, CD player. \$6000 or best offer. 614-286-3685.</p> <p>2000 HONDA ACCORD EX W/ WARRANTY. 4 dr 5spd, loaded, AM/FM/CD, LOW miles. Factory warranty thru 7/2007. \$13,850. 614-530-8307, 614-784-0216</p> <p>2000 TOYOTA Corolla White. in Great Condition. 50K, automatic, PW Doors/Windows \$8200 Call OMAR (614)-485-0160</p> <p>2002 MAZDA Protege ES. 5 speed, 16 inch alloy wheels, moon roof, AM/FM CD stereo, front and side airbags, power everything. Keyless entry. 15,000 mi. Balance of factory warranty, teal w/ black interior, like new in and out. \$11,995. 610-710-1364</p> <p>2003 VOLKSWAGEN Golf GL. 13,500 miles, automatic, 4 door, silver, \$14,000. OBO. Call 614-946-0918.</p> <p>88 VOLVO 760 Silver Sedan, 141K, leather, power seats, windows, locks, bike rack, well taken care of, no rust. \$1,250 OBO. 614-531-6425.</p> <p>98 HONDA CIVIC EX Coupe. Blk, 5sp, all pwr, A/C, crse, sunrt, 120K, EC, \$5995/OBO. 657-4349</p> <p>AAA I buy used cars @ best price. all models. 527-7905, 781-6135 ext. 109.</p> <p>CARS FROM \$500. Police impounds and tax repo's. For current listings, call 1-800-319-3323 ext. 3699.</p>	<h3>TRAVEL / VACATION</h3> <h3>BAHAMA SPRING BREAK</h3> <p>\$189 5 Days/4 Nights \$239 7 Days/6 Nights</p> <p>Prices Include Round-trip luxury cruise w/food. Accommodations on the island at one of ten resorts (your choice).</p> <p>APPALACHIA TRAVEL 1-800-867-5018 www.BahamaSun.com "We'll Beat Any Package Price"</p> <p>SPRING BREAK Beach and Ski Trips on sale now! Call 1-800-SUNSHINE today! Or visit www.Sunshine.com</p> <p>SPRING BREAK - Daytona. Best oceanfront hotels - lowest prices. 800-881-6173. www.daytonaall-in-one.com</p> <p>SPRING BREAK - Panama Beach Florida "Summit" luxury condos by Lavelle & Spinnaker Sales. Discount Rates. 404-355-9637</p> <p>SPRING BREAK 2004. Travel with \$75, America's #1 Student Tour Operator to Jamaica, Cancun, Acapulco, Bahamas & Florida. BIGGEST PARTIES, BEST CLUBS! Call for group discounts. Information/Reservations: 1-800-648-4849 or www.sttravel.com</p> <p>SPRING BREAK Cancun, Mexico, Jamaica, Padre & Florida Free food, parties, & drinks! Best hotels - lowest prices! www.breakerstravel.com, (800) 965-6789.</p> <p>SPRING BREAK Panama City \$199! 7 Nights 6 Free Drinks Free Covers & Parties 5 Day Spring Break Bahamas Cruise \$279! Cancun, Jamaica Nassau \$529 Daytona \$159! www.SpringBreakTravel.com 1-800-678-6386</p>	<h3>SERVICES TUTORING</h3> <p>A MATH tutor. All levels. Also Business Math. Teaching/tutoring since 1985. Checks okay. Call anytime. Clark 294-0607.</p> <p>A MATH tutor. Levels 050 to 875. 30 years experience, retired teacher, patient, understanding. Periodic or weekly help with homework, quiz & exam reviews. OSU location. E-mail: osumathutor@hotmail.com. Tel. 291-5040.</p> <p>DO YOU know how to get a job? Think going to college is hard? Wait till you try to get a job. We will teach you how. Reasonable rates. Discounts for multiple students. Call Bill Hazen & Associates, Inc. 614-581-3308</p> <p>MATH, STATISTIC and Physics Tutor. Experienced Ph.D. tutor. Undergraduate courses in Math, Statistics, and Physics. Call 361-8784 anytime.</p> <p>PHYSICS TUTOR since 1965. Call anytime. Clark 294-0607.</p> <p>STATISTICS TUTOR. All courses since 1965. Call anytime. Clark 294-0607.</p> <h3>MISCELLANEOUS BUSINESS OPPOR.</h3> <p>1627 W. 1st Avenue. Office storefront. 990 sq. ft. \$50/month lease. Call 486-9756</p> <p>AVON REP needed. Be your own boss & set your own schedule. Call Frank 291-2773 ISR</p> <p>MAKE MONEY taking online surveys. Great opportunity for students! Earn \$10-\$125 for surveys or earn \$25-\$250 for Focus Groups. Visit www.cash4students.com/ohio</p> <p>SEND VIDEO Email, \$5/month. http://store.cdmdirect.com/intervision.</p> <p>WHERE WOULD an extra \$3,000 a month take you?? Coastal Vacations: America's #1 Home Based Business. Why? This is not Multi Level Marketing. For once, earn what you are worth! Call Steve at 1-877-233-9298</p>
<h3>HELP WANTED GENERAL</h3> <p>Wyandot Lake Internships Come work at the best place for summer fun!</p> <p>Wyandot Lake is seeking motivated students interested in paid Internships for our exciting 2004 season. Current openings include Human Resources, Public Relations & Park Facilities. Must have excellent communication & organizational skills. HR position begins in March, PR & PF positions begin in April.</p> <p>Candidates should be working towards a related degree or have some working knowledge of positions. Internships offer a rewarding experience & great career training. What are you waiting for..... Apply today:</p> <p>Wyandot Lake Human Resources 10101 Riverside Dr. Powell, OH 43065 Fax: 614-889-6143 Email: acloyd@sftp.com</p>	<h3>HELP WANTED GENERAL</h3> <p>ABA THERAPISTS - Will Train. Dublin family needs ABA therapists/tutors for 3 1/2 y.o., moderately autistic son. Training available Mon-Fri afternoons. Affectionate, bright and happy little boy - great experience and pay. Call Susan 614-932-9432 or email therapists@worldnet.att.net</p> <p>BABYSITTERS NEEDED - Prefer experience with teenagers. MBWF Evenings and Tues. Thurs. Contact 846-6571.</p> <p>CHILD CARE teacher for two year olds. 3-6pm, M-F, Riverside Methodist Child Care 201 Zollinger Rd. (Arlington) 486-5262.</p> <p>CHILDCARE NEEDED in our home for 15 FT Monday through Friday, 234-1891, leave message for Marian.</p>	<h3>HELP WANTED CHILD CARE</h3> <p>WEEKEND BABYSITTER needed. Weekend child care needed for Saturdays and Sundays. A great home environment in Central Bexley. Usually 10-15 hours per weekend, our children love to pretend play, build, color, read books and watch Scooby Doo DVD's. Great pay for right person. Need reliable transportation, non-smoker and must have references. Interested??? Please call 614-570-2783 for more information and setup an interview.</p>	<h3>HELP WANTED CLERICAL</h3> <p>PT RECEPTIONIST/DATA Entry Position starting in March. Ideal for student. 4 evenings/wk. Mail resume to HR Dept. 1515 Indianola Ave., 43201</p>	<h3>HELP WANTED CLERICAL</h3> <p>THE BUCKEYE Hall of Fame Cafe is looking for high energy, enthusiastic people for the new Birthday Party service team. Individuals should work well with children and must have weekend and evening availability. Apply in person 1421 Olentangy River Rd.</p>	<h3>FOR SALE AUTOMOTIVE</h3> <p>99 JEEP Grand Cherokee Ltd V8. Fully loaded, 10 disc CD player, owner, 110K. Excellent condition. Below Bluebook. \$9500. 740-965-8365</p> <p>1998 TOYOTA Corolla. 125k, automatic, sunroof, some rust. \$850. 595-6117</p> <p>1993 FORD Taurus LX. Gray sedan, 140K miles, automatic, fully loaded, good condition. \$1200. OSU. Call 475-4040.</p> <p>1995 NISSAN Ultima. Excellent condition, LOW miles. Leather interior, 5 speed, 109K miles. Asking price \$2800. 206-7951.</p> <p>1997 AUDI A6 Quattro. leather, sunroof, Bose stereo system, CD and cassette, alloy wheels, 82K miles. \$9500. 846-0160.</p> <p>1997 HONDA Prelude pearl color, 100K miles. Factory spoiler, moonroof, alloys, power windows and locks, CD player. \$6000 or best offer. 614-286-3685.</p> <p>2000 HONDA ACCORD EX W/ WARRANTY. 4 dr 5spd, loaded, AM/FM/CD, LOW miles. Factory warranty thru 7/2007. \$13,850. 614-530-8307, 614-784-0216</p> <p>2000 TOYOTA Corolla White. in Great Condition. 50K, automatic, PW Doors/Windows \$8200 Call OMAR (614)-485-0160</p> <p>2002 MAZDA Protege ES. 5 speed, 16 inch alloy wheels, moon roof, AM/FM CD stereo, front and side airbags, power everything. Keyless entry. 15,000 mi. Balance of factory warranty, teal w/ black interior, like new in and out. \$11,995. 610-710-1364</p> <p>2003 VOLKSWAGEN Golf GL. 13,500 miles, automatic, 4 door, silver, \$14,000. OBO. Call 614-946-0918.</p> <p>88 VOLVO 760 Silver Sedan, 141K, leather, power seats, windows, locks, bike rack, well taken care of, no rust. \$1,250 OBO. 614-531-6425.</p> <p>98 HONDA CIVIC EX Coupe. Blk, 5sp, all pwr, A/C, crse, sunrt, 120K, EC, \$5995/OBO. 657-4349</p> <p>AAA I buy used cars @ best price. all models. 527-7905, 781-6135 ext. 109.</p> <p>CARS FROM \$500. Police impounds and tax repo's. For current listings, call 1-800-319-3323 ext. 3699.</p>	<h3>TRAVEL / VACATION</h3> <p>#1 SPRING BREAK Vacations! Cancun, Jamaica, Acapulco, Bahamas & Florida. Best parties, best hotels, best prices! Group discounts, organizers travel free! Space is limited! Book now & save! 1-800-234-7007. www.endlesssummertours.com</p> <p>***ACT NOW!*** We have the cheapest prices for Spring Break travel. Book 11 people, get 12th trip free. Special rates for 6 or more people www.Spring-BreakTravel.com</p> <p>Bahamas Spring Break Party Cruise 5 Days From \$279! Party With Real World Paris Celebrities At Exclusive Cast Parties! Great Beaches & Nightlife! Includes Meals, Port/Hotel Taxes! 1-800-678-6386 www.SpringBreakTravel.com</p>	<h3>LOST</h3> <p>LOOKING FOR Cell - Lost one silver Kyocera Virgin phone. Reward, reward will be given. Call 614-291-4732.</p> <h3>SERVICES GENERAL</h3> <p>A-1 MOVING - OSU Experienced mover w/ pickup truck & around campus area. Call 262-5210, evenings.</p> <p>GUITAR LESSONS - All styles are welcome. Learn the music you want to play NOW. Theory and music reading also available. Call NOW 668-6110.</p> <p>HORSE BOARDING - 20/minute from campus. Indoor/outdoor arenas. 614-855-7243.</p> <p>PIANO PLAYER wanted to teach lessons to OSU students. Experience necessary. Location & your fee to be negotiated. 419-304-5677.</p> <p>UNPLANNED PREGNANCY? Decisions to make? Pregnancy tests. Confidential Listing. 614-221-0844. www.birthing.org</p>	<h3>MISCELLANEOUS FOR RENT</h3> <p>PARKING SPACES, southwest campus area. Office 65 W. 9th Avenue. 291-5146/299-6840.</p> <h3>MISCELLANEOUS GENERAL</h3> <p>PHOTOGRAPHER WANTS (drug-free) attractive female for nude boudoir modeling test shots, audition, will out with charges, zero obligation, discretion assured. 262-6999</p> <h3>ANNOUNCEMENT / NOTICE</h3> <p>CREDIT CARDS for Students. Limited Time Only! www.goodcreditusa.com (Include the www.) Get Yours Today!</p> <p>GET STRAIGHT A's! Fast & easy! Proven system for students to learn techniques. Send \$4.00 now! POB 3541, Stamford, CT 06905.</p>
<h2>Organic Chemistry Flexible Job Opportunity</h2> <p>Chemical Abstracts Service has a temporary part-time opening (working up to 20 hours/week). Responsibilities include data entry, editing, and proofing of chemical information for database building projects. Position requires data entry using a computer, with training provided. Candidate must have completed one year of college-level organic chemistry (degree not required). Flexible hours, starting salary is \$12 per hour.</p> <p>For consideration, please e-mail resume to: jobs@cas.org. For more information about CAS, refer to our web page at www.cas.org. An Equal Opportunity Employer.</p>	<h2>XTREME BEVERAGE MODEL SEARCH!</h2> <p>7 DAYS IN MAUI WEEKLY CASH PRIZES XTREME POSTER MODEL FOR 2004 SEVERAL PAID APPEARANCES INCLUDING LAS VEGAS TELEVISION SHOW APPEARANCES AND MUSIC VIDEO APPEARANCES</p> <p>***EVERY THURSDAY STARTING JAN. 22ND***</p> <p>THE SEARCH IS ON!</p> <p>5411 Bethel Rd. Sawmill Center 614.764.0500 www.columbusgold.com MUST BE 18 YEARS OLD TO ENTER. NO EXPERIENCE NECESSARY.</p>	<h2>Spring Break 2004</h2> <p>The Ultimate Experience</p>						



COURTESY OF EASTMAN KODAK
Kodak plans on installing full service kiosks for film processing and print developing.

Faster photos from Kodak's kiosks

Photography giant slowly switches to digital, offers customers speedier options to get traditional prints

By Ben Dobbin
Associated Press

ROCHESTER, N.Y. — The latest advance in old-fashioned photography is coming soon: a self-service kiosk that can convert a roll of 35mm film into prints in as little as seven minutes.

Eastman Kodak Co.'s Picture Maker film-processing stations will be test-marketed in Detroit this month, with a full-scale rollout set for later this year in pharmacies, supermarkets and photo-specialty shops across the United States and Europe.

Last fall, the world's largest maker of photographic film unveiled an ambitious new strategy to accelerate its push into new digital markets. At the same time, it acknowledged that its traditional photography businesses — a century-old cash cow — were in irreversible decline.

The kiosks appear designed to plug a gap between photography's old and new ways of creating images and perhaps even slow the faster-than-expected migration of shutterbugs to digital cameras.

"It is very easy to believe that this could change the trajectory in the decline of film," said

Kent McNeley, general manager of Kodak's consumer output operations.

The kiosks will allow customers to preview, crop, enlarge and tidy up their snapshots, then print only those they want — a benefit that digital camera users already enjoy. Instead of negatives, the machines also will store the photos on a digital CD.

Digital cameras outsold film cameras for the first time in the United States in 2003, the Jackson, Mich.-based Photo Marketing Association said. As a result, 200 million fewer rolls of film were processed last year compared with a peak of 781 million in 2000, it said.

Photography analysts scoffed at Kodak's notion that film kiosks might alter those trends.

"It would be nice if it happens, but I wouldn't bet on it," said Ulysses Yannas of Buckman, Buckman & Reid in New York.

Nonetheless, with tens of millions of film cameras still in use, "there is, and there will continue to be a very big market for film," particularly in developing markets in Asia and Latin America, Yannas said.

The conventional photography business still provides Kodak with the bulk of its profits, so

"It is very easy to believe this could change the trajectory in the decline of film."

Kent McNeley
Kodak's consumer operations
general manager

extending its life could prove vital as the company steers into digital waters. To complete the painful transition, Kodak revealed last month it is cutting 12,000 to 15,000 more jobs — or nearly a quarter of its work force — over the next three years.

Kodak acquired the rapid film-processing technology from Applied Science Fiction Inc. of Austin, Texas, for \$32 million last year. More than 150 new patents used in creating the film kiosk will make it difficult for competitors to match, Kodak said.

NOVELIST FROM PAGE 7

the romance genre.

"It's hard to get people to buy romance in hardcover because they are prejudiced against it," Crusie said. "Call it women's fiction and they'll buy it and like it."

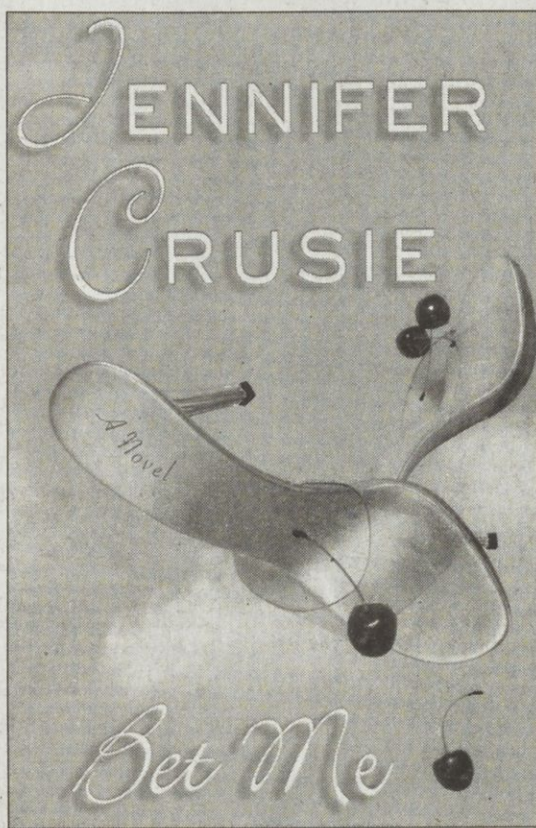
Crusie's new book is entitled "Bet Me" is a romance novel she originally wrote in 1992. It was not accepted by editors at that time. Crusie's agent resubmitted the manuscript, and Crusie's editor suggested a rewrite.

After reading it for the first time in 10 years, Crusie agreed the book needed major work.

St. Martin's Press, the book's publisher, describes it as a novel about long shots, risk management, true love and great shoes.

Thurber House is hosting the event. Thurber House, 77 Jefferson Ave., or the former home of James Thurber while in college, is also a literary center, bookstore and museum of Thurber materials. It is also listed on the National Register of Historic Places.

The reading begins at 7:30 p.m. tonight at the Columbus Metropolitan Library's main branch, 96 S. Grant Ave., Columbus. Tickets for the reading are \$17 and are available at the door. To purchase tickets call 464-1032 or visit Thurber House's Web site at www.thurberhouse.org.



COURTESY OF ST. MARTIN'S PRESS

KING FROM PAGE 7

moments where they reveal another part of themselves, and a glimpse of Butts' alter ego is not fascinating enough to merit a reality show.

Anyone employed in the adult entertainment industry must have an on-stage persona. Performers certainly don't wake up each day wearing a leather thong, hog-tied to a bed with a sock stuffed in their mouth, as might be portrayed on set.

Furthermore, porn is reality television, and the idea of hiding behind the clique of reality TV is pathetic. To put it bluntly, "Family Business" appeals only to viewers who are too embarrassed to go behind the red curtain and rent a porn from a public video store.

The most disturbing part of the series — other than the fact that Butts actually kisses his child with those lips — is Butts' mother, Lila, who is also involved in the business. When not searching for a love interest for her son, she keeps the company's books. Worse is that she openly admits to watching many adult films, just not the ones featuring her son. At one point she suddenly finds morals. Something is slightly repulsive about a parent watching porn and openly admitting it.

Butts' peculiar cousin, Stevie, is his right-hand man and handles the distributing part of the business. His pathetic life consists of shooting photos of prospective performers. Revealing too much about the personalities might ruin the shocking revelation that these are real people.

All in all, the pilot was garbage and not appealing. Besides being a shameless plug for



COURTESY OF SHOWTIME ENTERTAINMENT
Seymour Butts finally gets a spot in the video store that isn't next to rubber playthings with the release of the first season of "Family Business" on DVD.

Butts' next adult film, its point is unclear, monotonous and distasteful. A reality show about a mother and son running a porn company is superficially laughable, but rather nauseating underneath. It is preposterous.

"Family Business," now in its second season, airs on Fridays at 11 p.m.

Samsung has just put you in the running to carry the torch.

Write an essay and you could be a torchbearer for the ATHENS 2004 Olympic Torch Relay. Just visit www.samsungusa.com/olympics

Samsung is bringing you one step closer to the glory and fame of the Olympic Games. Just write a simple 50-word online essay at www.samsungusa.com/olympics explaining how you embody the Olympic spirit. If your submission wins, you could have the honor of being an Olympic torchbearer as the torch goes on tour. It's your chance to potentially share in a unique moment of Olympic history for all the world to see. Samsung. Share the experience.

Pass the flame, unite the world.

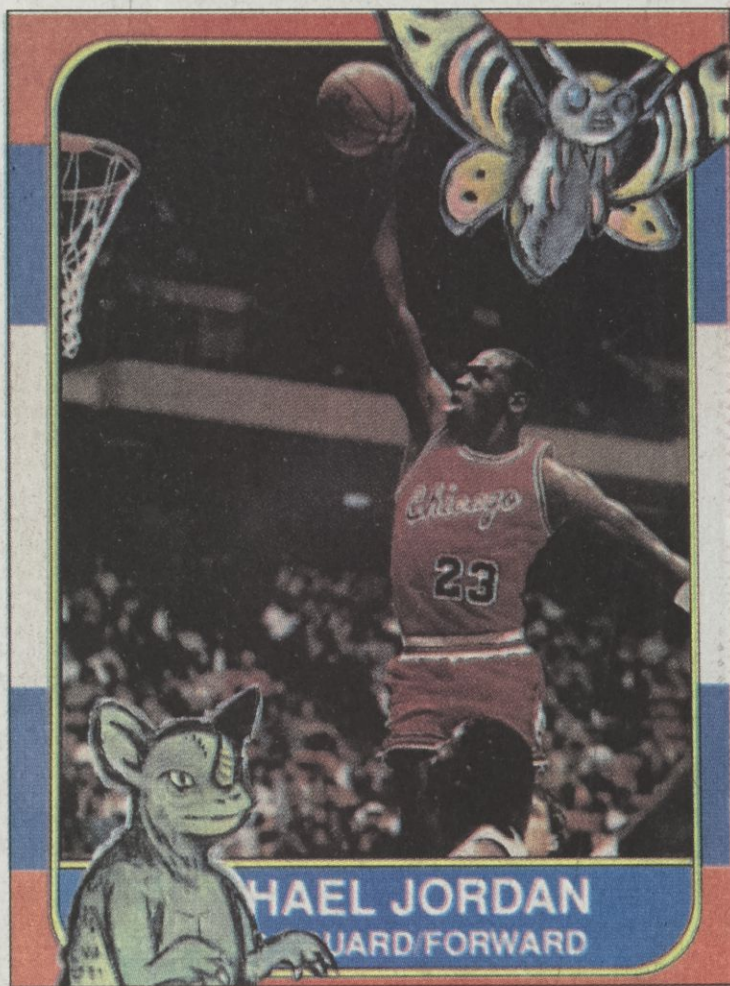
www.thelantern.com

LEADS FROM PAGE 7



IAN M. JAMES/THE LANTERN

Works from the graduate exhibition include Heather Willems' "Three Attempts at Seduction" 60-minute video loop, above, David Foster's insect construction "Coleoptera" below, and Steve Seeley's "\$1600 Michael Jordan Rookie Card with Mothra and Baragon," right.



"Everything doesn't have to be conceptual or serious."

Steve Seeley
OSU painting and drawing
graduate student

moving away from natural instincts to create our own reality."

Andy Warhol's "Campbell's Soup" screen prints and Sigmund Freud are inspirations for O'Brien's work.

"The Campbell's screen print was making a comment on society and consumerism because of its cold and distant feeling," O'Brien said. The cold pictures act as masks."

Jessica Larva works with social issues of individuals and groups. Her video, "Dyslexia," shifts text across the screen to show the frustrations of people with the disease.

"I have minor dyslexia, but it runs in my family. I just wanted to express the frustrations of being dyslexic," Larva said. "I just want them to understand what dyslexic people face daily. People think you're not intelligent because reading is so difficult. It's not an IQ thing, but a processing error."

In a society where reading comprehension measures intelligence, success for the dyslexic may seem difficult. Larva's video images, however, suggest otherwise.

"I offer some hope showing that some artists affected by dyslexia have succeeded like Leonardo Divinci and William Butler Yeates," Larva said.

The artistic approach of Steve Seeley with his paintings, "The fundamentals of Tying a Tie" and "\$1600 Michael Jordan Rookie Card with Mothra and Baragon," are both interesting pieces.

"I'm in an emerging genre of art where everything doesn't have to be so conceptual or serious,"

Seeley said. "I like to have fun with what I do because art should be fun. If you take it too seriously you lose the initial reason for making it."

Inspired by comic books, Seeley incorporates humor within his art. His painting, "The fundamentals ...," is a naked self-portrait explaining how to tie a tie — without actually having one — to a rabbit-pig who cannot wear a tie.

"My geek culture of comics influenced my work, comics are the number one influence of my art," Seeley said. "They're probably why I believe art should be humorous."

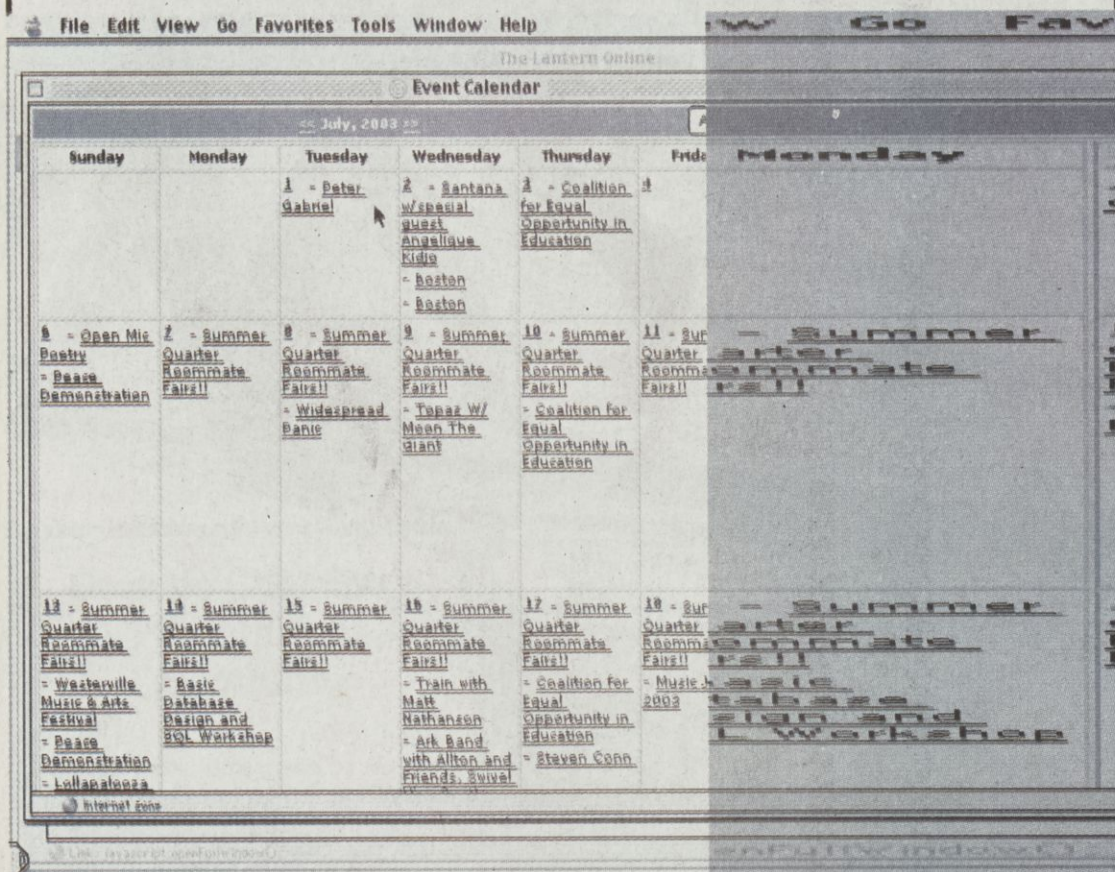
Photography graduate, Nora Herting, takes an inquisitive approach with her work. Two Victorian-style dresses sit peacefully with the dresses and shoes in full view, but with heads masked away from the audience.

"My intent is to raise more questions than answers within a photograph," Herting said. "Too often people take a photograph at face value."

Want to know what's happening on and off campus?

1. Go to the Lantern's home page at <www.thelantern.com>.
2. Select "calendar" and then click on "visual calendar" for a listing of the current month's activities.

You can click on any event in the month for a detailed explanation



If you need help, call 292-9235 or e-mail <davis.117@osu.edu>

DON'T FIND YOURSELF IN THE DOGHOUSE

Give the Women in Your Life a Special Gift This Valentine's Day

ORDER NOW
SUPPLIES ARE LIMITED!

ORDER ON LINE AT:
www.TheHolidayGiftStore.com
AND RECEIVE AN ADDITIONAL
10% OFF

DISCOUNT CODE: PLAT-OSU



Call today to order this Sterling Silver and Natural Red Ruby Valentine Pendant for all the special women in your life.

Place your order today for just \$29.95 plus S&H and receive this beautiful hand crafted, imported heart shaped pendant, packaged in a unique rose shaped gift box. And, as a special university promotion, receive a romantic getaway for two with a choice of destinations including Las Vegas, Cancun, Honolulu, and many other exciting locations. The romantic getaway package alone is worth up to \$400 in guaranteed three star hotel vouchers.

CALL OUR TOLL FREE ORDER NUMBER TODAY:

800/759-9559

Call by 5 p.m. today and we guarantee delivery on or by Valentine's Day

ORDER ON LINE AT: www.TheHolidayGiftStore.com