



Science & Engineering Library News

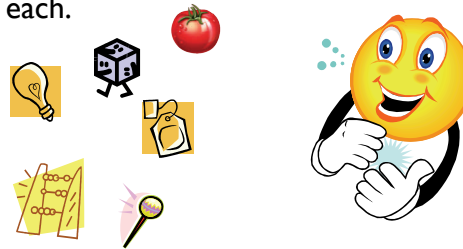
News for the Department of
Statistics Faculty

Volume 3 Issue 1
Autumn 2008

Hands-On Display in SEL

Ever wonder what's being re-researched about various everyday objects? Come to SEL and find out something interesting about abacuses, tea bags, Tootsie Pops, diced tomatoes, Rubik's Cubes, and light bulbs. See an example of the object

and read something interesting about each.



Did You Know? Important Links

- [OSU Libraries Homepage](#)
- [Science & Engineering Library](#)
- [OSU Library Locations & Hours](#)
- [Interlibrary Loan/Document Delivery](#)
- [Research Databases List](#)
- [Search the OSU Library Catalog](#)
- [Search the Ohio-LINK Catalog](#)
- [Ebooks](#)



Journal articles from OSU and non-OSU collections

Article Express provides electronic delivery of journal articles, book chapters, and proceedings papers to OSU faculty, staff, and students. The online Article Express form can be used to request articles from both OSU and non-OSU collections.

[More Information on Article Express](#)

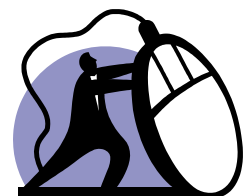
Resources Spotlight

[MathSciNet](#)

With over two million publications and 500,000 authors indexed, MathSciNet is a major resource for information in mathematics and statistics. You can also search to see who has cited a specific article or journal.

[ebrary](#)

Contains the full text of hundreds of ebooks, with more on their way, in many disciplines. Nearly 1,000 books currently available in various science and engineering disciplines.



Contact Information

Danny Dotson
dotson.77@osu.edu
614-688-0053
IM: osumathlibrarian
(Yahoo, AIM, MSN)

Are you interested in increasing the impact of your research? Do you want better visibility, readership, and longevity of your scholarship? If the answer is “yes,” you should know about the Knowledge Bank (kb.osu.edu), a service of the OSU libraries and the Office of the CIO.

The Knowledge Bank is a secure and permanent digital repository that can help make your work easily accessible to others on the web through harvesters like Google. It can preserve your work into the future, safe from loss or damage. The OSU Libraries provides setup, training, upgrades, hosting, and support. You don't have to manage a server or HTML. You don't need technical staff. In most cases, a student or administrative assistant can manage your material, or you can ask the library to do it for you – at no charge to you, or your department.



The Knowledge Bank contains a wide variety of scholarly publications such as journal articles, books, technical reports, conference reports, videos, sound recordings, learning objects, and posters. In addition, the Knowledge Bank provides a persistent identifier, a URL that will never change, ensuring that there are never broken links to your work and can be used in a citation.

Many journals now allow you to deposit work in a repository. For publishers without stated policies, permissions have been successfully negotiated for both books and articles. The libraries' Rights Management Office helps you

with copyright questions, and may even negotiate with a publisher on your behalf.

The advantage for you is that studies have shown that readership and citation rates increase from 50 to 500 (*D-Libs, Vol. 12, No. 11*) percent for works openly posted on the Internet. Materials in the Knowledge Bank receive priority indexing and ranking from search engines. The underlying standards make it easy for search engines such as [Google Scholar](#) and [Google](#) to find and index scholarly works. So, your work will appear in the results faster and will be ranked higher.



With The Knowledge Bank, copyright is not transferred to the library, you maintain control over your own work. The Knowledge Banks also offers the use of a Creative Commons License. You easily and legally stipulate both the use you'd like others to make of your work and the required attribution. The library is only granted a non-exclusive license to distribute and preserve materials.

In addition to the Ohio State University, there are repositories at over 400 universities, including Cambridge, Harvard, Cornell, MIT, and Columbia. OSU's Knowledge Bank is one of the largest of its' kind in the world. To find out how you can showcase your scholarship, or for more information, please visit us online at kb.osu.edu, or call 292-2503.