



OSU Libraries Course Services for MAPS and Engineering

[OSU Libraries](#)

[Instructional Services](#)

Library Instructional Services

Library-related instructional services are available to you, including:

- Library instructional sessions
- Tutorials, guides, and handouts for resources, search strategies, and information literacy concepts such as plagiarism and detecting bias. If we don't have one already, we can make one!
- Information literacy assignments tailored to your course
- Faculty and students may also ask for one-on-one assistance!

Reserves

OSU Libraries can assist you with information materials for course content. No need to make copies of notes, old tests, articles, or book chapters. [eReserves](#) can scan items, link to electronic resources, and add them to Carmen for students to view and print. They will even check copyright requirements.



eReserves has the advantage of being accessible at all times from anywhere in the world via Carmen - a big advantage over traditional print-based reserves. If desired, however, you can still place print books on [Closed Reserve](#) at a library location.

Course-Related Research Assistance

The OSU Libraries also offers course-related research assistance for faculty and students. Those needing help using resources or finding information for a paper, project, or presentation may seek assistance from a [subject librarian](#) or may seek help through [phone, email, or in-person](#).

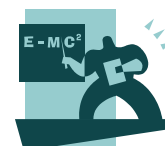


Course Content

Looking for a good reading to give to students? Perhaps a video to show in class? Looking for alternate texts or for a good main textbook for your class? We can also assist with this.

We can search our many databases for relevant articles on course topics and also find what books are available on a topic - possibly even ebooks!

We can possibly assist with making these available to students - see the section on Reserves.



Contact Me

Danny Dotson
dotson.77@osu.edu
688-0053